

1230433
07/15/13

Draft Environmental Assessment for Proposed Land Conveyance at the Hanford Site, Richland, WA

Public Comment Period
Fact Sheet

The U.S. Department of Energy (DOE) has prepared a National Environmental Policy Act (NEPA) Draft Environmental Assessment (EA) to assess potential environmental effects of conveying approximately 1,641 acres of Hanford Site land to the Tri-City Development Council, the DOE-recognized Community Reuse Organization (CRO). The National Defense Authorization Act of 2015 requires DOE to transfer the land by September 30, 2015. DOE is seeking input on the completeness and factual accuracy of the data and any additional information that should be considered.



Available for Public Comment

July 13 – August 12

Scoping process

In 2012, DOE announced its intent to prepare an EA to assess the potential environmental effects of conveying approximately 1,641 acres of Hanford Site land to the local CRO. During the EA scoping period, DOE received, and subsequently considered, comments from members of the public, agencies, and tribes. Most of the input addressed natural and cultural resources, the NEPA process, and socioeconomics.

Land Suitable for Transfer

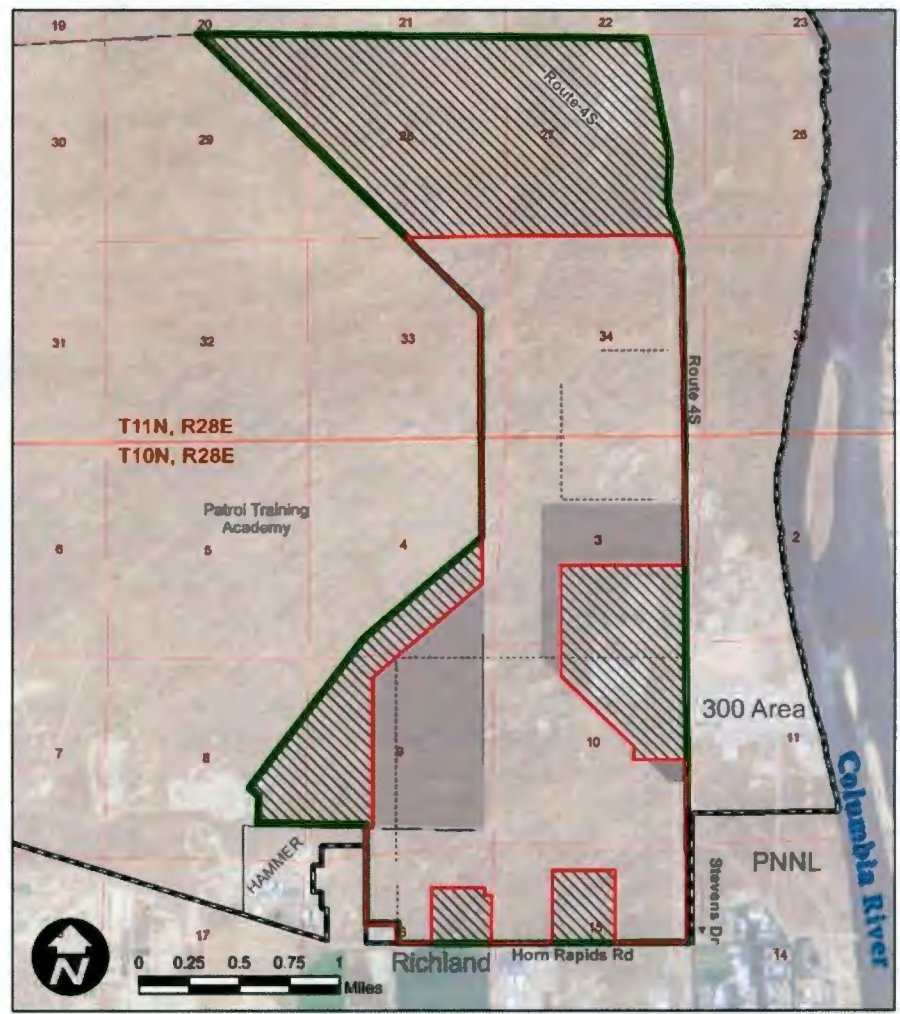
DOE conducted a land suitability review process that began with an initial Project Area of approximately 4,400 acres. Through this review process, DOE identified constraints or continuing DOE mission needs that currently prevent conveyance of some lands within the Project Area. DOE identified about 2,500 acres with greater suitability for conveyance, which became the Focused Study Area (FSA) (see map).

The approximately 1,641 acres that DOE would convey would be selected from the FSA. Within the FSA, approximately 539 acres are not suitable for transfer but could be used for utility corridors, via easement or other realty instrument. These 539 acres are referred to as the Potential Access Agreement Land (PAAL).

Environmental Consequences

The draft EA analyzes the reasonably foreseeable environmental effects associated with the probable future uses of lands within the FSA.

DOE used analytical assumptions in the EA that would tend to maximize estimates of foreseeable environmental effects associated with footprint, infrastructure, utilities, emissions, construction activities, projected workforce and traffic, water usage, and similar requirements for site development.



- Project Area (PA) – 4,413 acres
- Focused Study Area (FSA) – 2,474 acres
- Hanford Site Boundary
- Land Not Suitable for Conveyance
- TRIDEC Land Request – 1,641 acres
- Potential Access Agreement Land (PAAL) – 539 acres

Draft Environmental Assessment for Proposed Land Conveyance at the Hanford Site, Richland, WA *(continued)*

Environmental Consequences *(continued)*

The EA describes the reasonably foreseeable environmental effects associated with: geology; water resources; air quality; ecology resources; wetlands and floodplains; cultural resources; land use; visual resources; noise, vibration, and electromagnetic fields; utilities and infrastructure; transportation; waste management; socioeconomics and Environmental Justice; and human health and safety. The analysis also considers cumulative environmental effects and discusses potential mitigation measures.



A public meeting will be held **Thursday, July 30** at the Hampton Inn, 486 Bradley Blvd, Richland, WA. Open House from 5:00 – 5:30 pm, a Project Overview and informal Q & A from 5:30 – 6:00 pm, and formal public comment from 6:00 – 7:00 pm.

PUBLIC INPUT ON DRAFT EA REQUESTED

The 30-day public comment period for the draft EA is **July 13, 2015 – August 12, 2015.**



Please submit comments by **August 12, 2015** to:

NEPA Document Manager
Land Conveyance EA
U.S. Department of Energy
P.O. Box 550, Mailstop A2-15
Richland, Washington 99352

Or email:
landconveyanceEA@rl.doe.gov

The draft EA can be found at www.hanford.gov on the Hanford Events Calendar. It's also available for review at the Public Information Repositories listed below.

Hanford Public Information Repository Locations

Portland

Portland State University Government Information
Branford Price Millar Library
1875 SW Park Avenue
Portland, OR 97207-1151
Attn: Claudia Weston (503) 725-4542
Map: <http://www.pdx.edu/map.html>

Seattle

University of Washington
Suzallo Library
Government Publications Division
Seattle, WA 98195
Attn: Hillary Reinert (206) 543-5597
Map: <http://tinyurl.com/m8ebj>

Richland

U.S. Department of Energy Public Reading Room
Washington State University, Tri-Cities
Consolidated Information Center, Room 101-L
2770 University Drive
Richland, WA 99352
Attn: Janice Parthree (509) 375-3308
Map: <http://tinyurl.com/2axam2>

Spokane

Gonzaga University
Foley Center Library
East 502 Boone Avenue
Spokane, WA 99258
Attn: John Spencer (509) 313-6110
Map: <http://tinyurl.com/2c6bpm>

Administrative Record and Public Information Repository
Address: 2440 Stevens Center Place, Room 1101, Richland, WA 99352
Phone: (509)-376-2530
Website Address: <http://www5.hanford.gov/arpir>



Department of Energy
Richland Operations Office
P.O. Box 550
Richland, Washington 99352

JUL 13 2015

15-SSD-0041

Addressees – See Attached

NOTICE OF PUBLIC COMMENT PERIOD, DRAFT ENVIRONMENTAL ASSESSMENT (EA) FOR THE PROPOSED CONVEYANCE OF LAND AT THE HANFORD SITE

The U.S. Department of Energy (DOE) Richland Operations Office (RL) has prepared a National Environmental Policy Act (NEPA) Draft Environmental Assessment (EA) to assess potential environmental effects of conveying approximately 1,641 acres of Hanford Site land to the Tri-City Development Council.

The draft EA is available for a 30-day public comment period from July 13 to August 12, 2015. DOE is seeking input of the completeness and factual accuracy of the analysis and any additional information that should be considered in the EA.

The National Defense Authorization Act of 2015 (NDAA) requires DOE to transfer the land by September 30, 2015. In addition to NEPA, transfer of Hanford Site federal lands requires DOE to complete the National Historic Preservation Act (NHPA) Section 106 process, the Comprehensive Environmental Response, Compensation, and Liability Act (CERCLA) Section 120 (h) process, and DOE Order 458.1, Radiation Protection of the Public and the Environment. The NHPA, CERCLA, and DOE Order 458.1 processes, and associated communication with involved agencies, are occurring in parallel with and have been integrated with the NEPA process as appropriate. Efforts are focusing on completing these processes in accordance with the NDAA.

The draft EA is enclosed along with a Fact Sheet providing additional details about the public comment period and ways to provide input. An open house and public comment meeting will be held at the Hampton Inn in Richland on July 30, 2015. There will be an open house from 5:00 – 5:30 p.m., a project overview and informal Q & A from 5:30 – 6:00pm., and a formal public comment period from 6:00 – 7:00pm. Formal comments may also be submitted via email to landconveyanceEA@rl.doe.gov or may be mailed to:

NEPA Document Manager
Land Conveyance EA
U.S. Department of Energy
P.O. Box 550, Mailstop A2-15
Richland, Washington 99352



JUL 13 2015

15-SSD-0041

-2-

I look forward to hearing your input on the draft EA. If you have any questions, please contact me or you may contact Paula Call, RL NEPA Document Manager, Site Stewardship Division at (509) 376-2048.

Sincerely,

for H. Boyd Hathaway

Karen L. Flynn, Program Manager
Office of Hanford Acquisition

SSD:PKC

Enclosure

cc w/ enclosure: See page 3

JUL 13 2015

Addressees: - Letter dated _____
15-SSD-0041

Addressees:

Cass Hartnett
University of Washington Suzzallo Library
P.O. Box 352900
Seattle, Washington 98195-2900

Claudia Weston
Portland State University/Bradford Price Millar Library
1875 SW Park Avenue
Portland, Oregon 97207-1151

Janice Scarano
U.S. Department of Energy Public Reading Rm. 101-L
2770 University Drive
Richland, Washington 99352

John Spencer
Gonzaga University Foley Center Library
East 502 Boone Avenue
Spokane, Washington 99202

Administrative Record and Public Information Repository
2440 Stevens Center Place, Room 1101
Richland, Washington 99352