

START 9513358.0662

0040914



Mr. John Grantham
State of Washington
Department of Ecology
Nuclear & Mixed Waste Program
P. O. Box 47600
Olympia, WA 98504-7600

FLUOR DANIEL, INC.

Date: May 16, 1994

Reference: Hanford Waste Vitrification Plant
DOE Contract DE-AC06-86RL10838
Fluor Contract 8457

Transmittal No.: WDOE-924

Dear Mr. Grantham:

TRANSMITTAL

We enclose 2 copy of the items listed below. These are issued per US-DOE request.

Response due to Fluor: N/A
Responds to: A160 PACKAGE

NUMBER	REV	DATE	TITLE
DCN - 0188	1	05/16/94	DCN TITLE: Add Pad Mounted Gear to Primary 13.8kV Feeder For OAB/TOB Building "APPROVED FOR CONSTRUCTION"

Reference: FRP-1441, FUP-859

Distribution:

- R. L. Long: DOE-RL, w/0
- TWP/AME Corresp Cntrl Cntr, MSIN A5-10 (A160 PACKAGE), w/0
- P. Felise, WHC-RL (MSIN G6-06), w/1
- Environmental Data Management Center (MSIN H6-08), w/1
- D. Duncan, US EPA, Region X, w/0
- M.D. Talbot, WHC -w/0

Very truly yours,

Nazy Eshraghi For

R.S. Poulter
Project Director

RSP:KAO:fps





FLUOR DANIEL

9513358.0663

US DEPARTMENT OF ENERGY
HANFORD WASTE VITRIFICATION PLANT

DESIGN CHANGE NOTICE

DCN - 0188

REV 1

PAGE 1 OF 13

DCN TITLE *ADD PAD MOUNTED
GEAR TO PRIMARY 13.8 KV
FEEDER FOR OAB/TOB
BUILDINGS*

DATE INITIATED
05/16/94

PACKAGE NO.
A170

SECTION 1: DESCRIPTION OF CHANGE

*ADD PAD MOUNTED GEAR NORTH OF MH-P51
FOR PRIMARY 13.8 KV FEEDER FOR OAB/TOB BUILDING*

REV 1 CHANGE

*PAGE 8; REVISED CONDUIT CALLOUTS
PAGE 10; ADDED CLOUD TO NOTE #5
PAGE 11; RESIZED ELECTRICAL DWCT
PAGE 12; REVISED CONDUIT STUB-UP SPACING
PAGE 13; REVISED CONCRETE PAD & ANCHORING OF
PAD MOUNTED GEAR*

FOR LIST OF AFFECTED DOCUMENTS, SEE SECTIONS 6 AND 7.

CAUSE OF CHANGE:

- Field Change Request
- Supplier Disposition
- Deficiency Report
- Design Development
- Change Request
- Other _____

HWVP-1109
Initiating Document(s)

SECTION 2: EVALUATION

ARE ANY OF THE FOLLOWING AFFECTED?

IF "YES" REVIEW
REQUIRED BY:

REVIEWER
COMMENTS/SIGNATURE/DATE

WAPA NO YES

QUALITY LEVEL I NO YES

SAFETY CLASS 1 OR 2 NO YES

SYSTEMS ANALYSES NO YES

MULTI-DISCIPLINE NO YES

DCN Evaluated by: Systems *Patricia Adams 5/16/94* ADM *B. C. ...*

STRUCTURAL

SECTION 3: APPROVED FOR CONSTRUCTION

J. S. Wood / J. A. ... 5/16/94
Originator Date

[Signature] 5/16/94
Project Resident Engineer Date

SECTION 4: CONCURRENCE

Project Management _____ Date

Systems _____ Date

Independent Safety _____ Date

Quality Assurance _____ Date

Configuration Management _____ Date

SECTION 5: RELEASED FOR CONSTRUCTION

PE STAMP REQUIRED? NO YES

WRC _____ Date

UCAT _____ Date

DOE _____ Date

COMMENTS:

9513358.0664



FLUOR DANIEL

US DEPARTMENT OF ENERGY
HANFORD WASTE VITRIFICATION PLANT

DESIGN CHANGE NOTICE

DCN - 0188

REV

1

DISCIPLINE

ELECTRICAL

PKG. NO.

A170

PAGE

2

PREPARED BY:

A. SPRUENGLI

Date:

05/16/94

DISCIPLINE ENGINEER:

Y. SHANE

Date:

05/16/94

SECTION 6: CONSTRUCTION DOCUMENTS AFFECTED

DOCUMENT NUMBER	SHT/PAGE	REV NO	DOCUMENT NAME	INCLD Y/N	DESCRIPTION OF CHANGE
SPECIFICATION B-595-C-AM0 -16111 ATTACHMENT A	1,2	0	CONDUIT SCHEDULE	Y	ADDED CONDUITS TO & FROM MH-PS1 TO PAD MOUNTED GEAR
ATTACHMENT B	1	0	CABLE SCHEDULE	Y	ADDED CABLES TO PAD MOUNTED GEAR
H-2-122126	1	3	ELECTRICAL CONSTRUCTION UTILITIES OVERALL DISTRIBUTION PLAN	Y	ADDED PAD MOUNTED GEAR
H-2-122134 REV 1 CHANGE	1	3	ELECTRICAL CONSTRUCTION UTILITIES DETAILS	Y	ADDED CONDUIT ENTRANCE TO MH-PS1. REVISED ONE LINE. ADDED INSTALLATION DIAGRAM
H-2-122134 REV 1 CHANGE	3	3	ELECTRICAL CONSTRUCTION UTILITIES DETAILS	Y	ADDED PAD WITH STUB-UPS FOR PAD MOUNTED GEAR

SECTION 7: NON-CONSTRUCTION DOCUMENTS AFFECTED

This section references affected items such as P&IDs or calculations/analyses, but they are generally not included in DCN package.

DOCUMENT NUMBER	SHT/PAGE	REV NO	DOCUMENT NAME	DESCRIPTION OF CHANGE
-----------------	----------	--------	---------------	-----------------------

NONE



FLUOR DANIEL

9513358.0665

US DEPARTMENT OF ENERGY
HANFORD WASTE VITRIFICATION PLANT

DCN - 0188

REV

1

DISCIPLINE

STRUCTURAL

PKG. NO.

A170

PAGE

3

DESIGN CHANGE NOTICE

PREPARED BY: H. SPRUENGLI

Date: 05/16/94

DISCIPLINE ENGINEER: D. SAYLOR

Date: 05/16/94

SECTION 6: CONSTRUCTION DOCUMENTS AFFECTED

DOCUMENT NUMBER	SHT/PAGE	REV NO	DOCUMENT NAME	INCLD Y/N	DESCRIPTION OF CHANGE
H-2-118063 REV 1 CHANGE	1	2	DISCONNECT SWITCH PAD FOUNDATION	Y	ADDED PAD FOUNDATION FOR PAD MOUNTED GEAR NORTH OF MH-P51

SECTION 7: NON-CONSTRUCTION DOCUMENTS AFFECTED

This section references affected items such as P&IDs or calculations/analyses, but they are generally not included in DCN package.

DOCUMENT NUMBER	SHT/PAGE	REV NO	DOCUMENT NAME	DESCRIPTION OF CHANGE
-----------------	----------	--------	---------------	-----------------------

Electrical Conduit Schedule for Package Number A170

REV NO.	BLDG NO.	RACEWAY NO.	FOR	FROM		TO		RACEWAY DATA			INCLUDED CABLE NOS.
				EQUIPMENT NUMBER OR LOCATION	PLAN DRAWING	EQUIPMENT NUMBER OR LOCATION	PLAN DRAWING	SIZE	TYPE	MATERIAL OF CONSTR	
0	00	P8300	POWER	DD-32A-099	DCN-0090	MH-P50	DCN-0090	4"	COND	PVC	P8300A,B,C
0	00	P8300A	POWER	MH-P50	DCN-0090	MH-P51	DCN-0090	4"	COND	PVC	P8300A,B,C
0	00	P8300B	POWER	MH-P51	DCN-0090	XT-32A-099	DCN-0090	4"	COND	PVC	P8304A,B,C
0	00	P8301	SPARE	POLE 105	DCN-0090	MH-P50	DCN-0090	4"	COND	PVC	DCN-0188
0	00	P8301A	SPARE	MH-P50	DCN-0090	MH-P51	DCN-0090	4"	COND	PVC	
0	00	P8301B	SPARE	MH-P51	DCN-0090	XT-32A-099	DCN-0090	4"	COND	PVC	
0	00	P8302	SPARE	POLE 105	DCN-0090	MH-P50	DCN-0090	4"	COND	PVC	
0	00	P8302A	SPARE	MH-P50	DCN-0090	MH-P51	DCN-0090	4"	COND	PVC	
0	00	P8302B	SPARE	MH-P51	DCN-0090	XT-32A-099	DCN-0090	4"	COND	PVC	
0	00	P8303	POWER	XT-32A-099	DCN-0090	SB-32A-099	DCN-0090	5"	COND	RGs	P8301A,B,C,G,H
0	00	P8304	POWER	XT-32A-099	DCN-0090	SB-32A-099	DCN-0090	5"	COND	RGs	P8302A,B,C,G,H
0	00	P8305	SPARE	XT-32A-099	DCN-0090	SB-32A-099	DCN-0090	5"	COND	RGs	
0	00	P8306	SPARE	XT-32A-099	DCN-0090	SB-32A-099	DCN-0090	5"	COND	RGs	
0	00	P8307	POWER	XT-32A-099	DCN-0090	SB-32A-099	DCN-0090	5"	COND	RGs	P8303A,B,C,G,H
0	00	P8308	SPARE	SB-32A-099	DCN-0090	STUB-OUT	DCN-0090	5"	COND	RGs	
0	00	P8309	SPARE	SB-32A-099	DCN-0090	STUB-OUT	DCN-0090	5"	COND	RGs	
0	00	P8310	SPARE	SB-32A-099	DCN-0090	STUB-OUT	DCN-0090	5"	COND	RGs	

9513358-0666

A170-16111

DCN-0188 Rev 1
PAGE 4 OF 13

Electrical Conduit Schedule for Package Number A170

REV NO.	BLDG NO.	RACEWAY NO.	FOR	FROM		TO		RACEWAY DATA			INCLUDED CABLE NOS.
				EQUIPMENT NUMBER OR LOCATION	PLAN DRAWING	EQUIPMENT NUMBER OR LOCATION	PLAN DRAWING	SIZE	TYPE	MATERIAL OF CONSTR	
0	00	P8311	SPARE	SB-32A-099	DCN-0090	STUB-OUT	DCN-0090	5"	COND	RGS	
0	00	P8312	SPARE	SB-32A-099	DCN-0090	STUB-OUT	DCN-0090	5"	COND	RGS	
0	00	P8313	SPARE	SB-32A-099	DCN-0090	STUB-OUT	DCN-0090	5"	COND	RGS	
0	00	P8314	SPARE	SB-32A-099	DCN-0090	STUB-OUT	DCN-0090	5"	COND	RGS	
0	00	P8315	SPARE	SB-32A-099	DCN-0090	STUB-OUT	DCN-0090	5"	COND	RGS	
0	00	P8316	SPARE	SB-32A-099	DCN-0090	STUB-OUT	DCN-0090	5"	COND	RGS	
0	00	P8317	SPARE	SB-32A-099	DCN-0090	STUB-OUT	DCN-0090	2"	COND	RGS	
0	00	P8318	SPARE	SB-32A-099	DCN-0090	STUB-OUT	DCN-0090	2"	COND	RGS	
0	00	P8319	SPARE	SB-32A-099	DCN-0090	STUB-OUT	DCN-0090	2"	COND	RGS	
0	00	G8320	SPARE	SB-32A-099	DCN-0090	STUB-OUT	DCN-0090	2"	COND	RGS	
1	00	P8321	SPARE	MH-PS1	DCN-0188	DD-32A-100	DCN-0188	4"	COND	PVC	
1	00	P8322	POWER	MH-PS1	DCN-0188	DD-32A-100	DCN-0188	4"	COND	PVC	P8300A,B,C
1	00	P8323	POWER	DD-32A-100	DCN-0188	MH-PS1	DCN-0188	4"	COND	PVC	P8304A,B,C
1	00	P8324	SPARE	DD-32A-100	DCN-0188	MH-PS1	DCN-0188	4"	COND	PVC	

DCN-0188

9513359-0667

A170-16111

DCN-0188 Rev 1
PAGE 5 OF 13

Electrical Cable Schedule for Package Number A170

DCN-0188

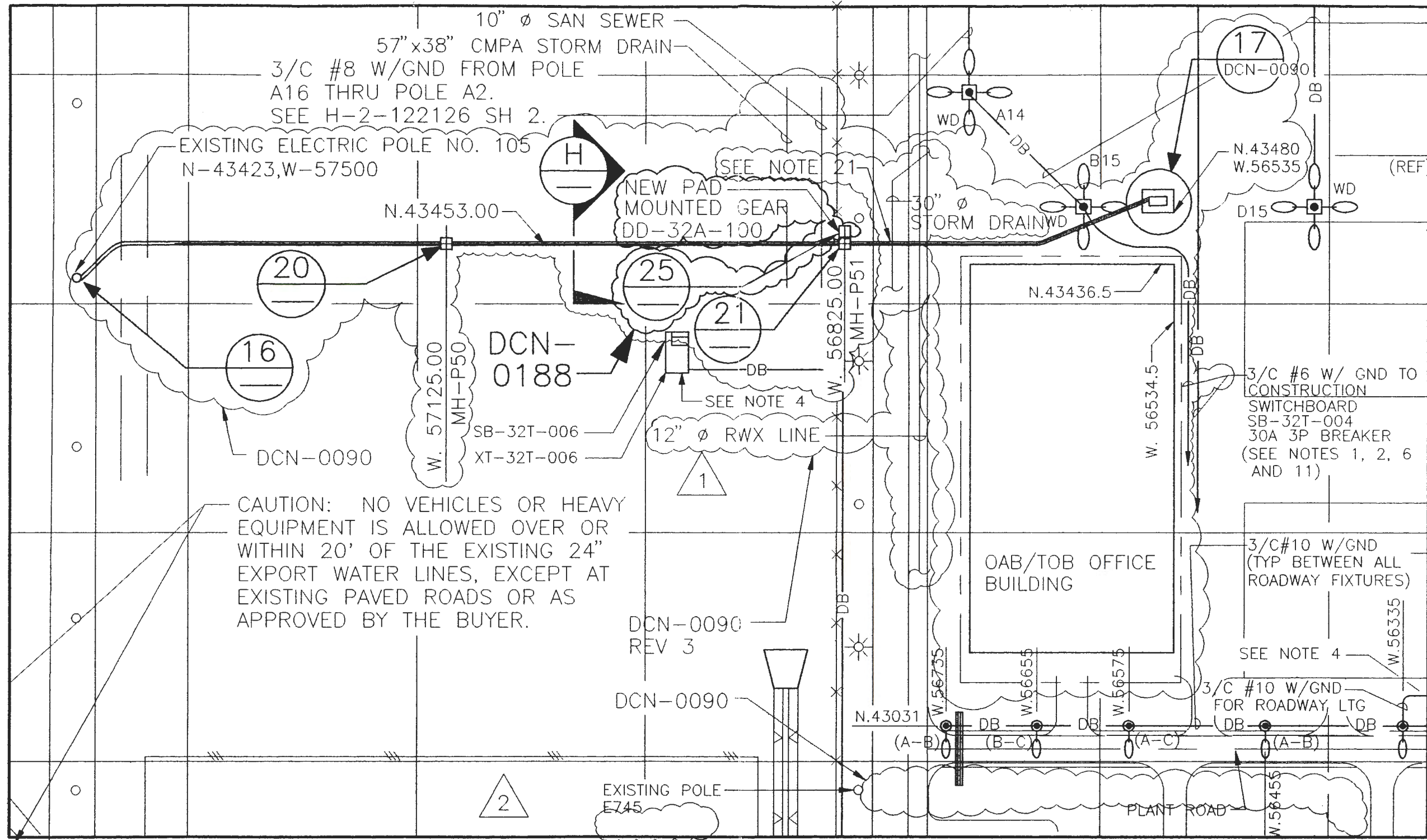
REV NO.	BLDG NO.	CABLE NO.	FROM		TO		CABLE DATA				ONE LINE DIAGRAM NO. H-2-	VIA
			EQUIPMENT NUMBER OR LOCATION	CONNECTION DRAWING	EQUIPMENT NUMBER OR LOCATION	CONNECTION DRAWING	SYS VOLT	NO. COND	SIZE	CABLE CODE		
0	00	P8300A	DD-32A-099		DD-32A-100			15 kV	1	1/0	FS03	P8300, P8300A, P8322
0	00	P8300B	DD-32A-099		DD-32A-100			15 kV	1	1/0	FS03	P8300, P8300A, P8322
0	00	P8300C	DD-32A-099		DD-32A-100			15 kV	1	1/0	FS03	P8300, P8300A, P8322
0	00	P8301A	XT-32A-099		SB-32A-099		DCN-0188	600V	1	750	A207	P8303
0	00	P8301B	XT-32A-099		SB-32A-099			600V	1	750	A208	P8303
0	00	P8301C	XT-32A-099		SB-32A-099			600V	1	750	A209	P8303
0	00	P8301M	XT-32A-099		SB-32A-099			600V	1	750	A206	P8303
0	00	P8301G	XT-32A-099		SB-32A-099			600V	1	4/0	AV02	P8303
0	00	P8302A	XT-32A-099		SB-32A-099			600V	1	750	A207	P8304
0	00	P8302B	XT-32A-099		SB-32A-099			600V	1	750	A208	P8304
0	00	P8302C	XT-32A-099		SB-32A-099			600V	1	750	A209	P8304
0	00	P8302M	XT-32A-099		SB-32A-099			600V	1	750	A206	P8304
0	00	P8302G	XT-32A-099		SB-32A-099			600V	1	4/0	AV02	P8304
0	00	P8303A	XT-32A-099		SB-32A-099			600V	1	750	A207	P8307
0	00	P8303B	XT-32A-099		SB-32A-099			600V	1	750	A208	P8307
0	00	P8303C	XT-32A-099		SB-32A-099			600V	1	750	A209	P8307
0	00	P8303M	XT-32A-099		SB-32A-099			600V	1	750	A206	P8307
0	00	P8303G	XT-32A-099		SB-32A-099			600V	1	4/0	AV02	P8307
0	00	P8304A	DD-32A-100		XT-32A-099			15kV	1	1/0	FS03	P8323 P8300B
0	00	P8304B	DD-32A-100		XT-32A-099			15kV	1	1/0	FS03	P8323 P8300B
0	00	P8304C	DD-32A-100		XT-32A-099			15kV	1	1/0	FS03	P8323 P8300B

P8301A, P8301B, P8301C, P8301M, P8301G, P8302A, P8302B, P8302C, P8302M, P8302G, P8303A, P8303B, P8303C, P8303M, P8303G, P8304A, P8304B, P8304C

A170-16111

DCN-0188

DCN-0188 Rev 1
PAGE 6 OF 13



DCN-0090

FLUOR DANIEL		U.S. DEPARTMENT OF ENERGY HANFORD WASTE VITRIFICATION PLANT		DESIGN CHANGE NOTICE	
DESCRIPTION OF CHANGE: ADD PAD MOUNTED GEAR TO PRIMARY 13.8 kV FEEDER FOR OAB/TOB BUILDING				BASE DOC. NO. H-2-122126 SHT/PG. 1 REV. 3 CR NO. HWVP-1109 DISCIPLINE: ELECTRICAL	
PREPARED BY: <i>H. Spunoff</i>		DATE: 5/16/94		DCN - 0188	REV. 1 PAGE 7
DISCIPLINE ENGINEER: <i>M. Deery</i>		DATE: 5-16-94			

9513358.0670
EXISTING CKT C8-L7

DD-32A-099
LOADBREAK
CUTOUT, 100 AMP

DCN-0188
REV 1

NEW
DD-32A-100
PAD-MOUNTED GEAR

FUTURE

SEE NOTES 1 & 2

DCN-0188
REV 1

EXISTING CABLES P8300A,B,C

NEW CONDUIT
NOTE 3



NEW CABLES P8304A,B,C

NEW CONDUIT
NOTE 4



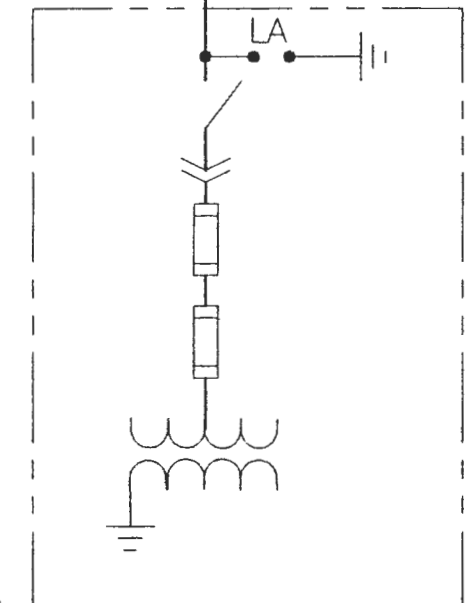
NEW CABLES P8304A,B,C

EXISTING CONDUIT
NOTE 4



MH-P50

EXISTING
MH-P51



XT-32A-099
OAB/TOB UTILITY
PAD MOUNTED
TRANSFORMER

NOTES:

1. NEW PAD MOUNTED GEAR SHALL BE S & C MODEL PMH-7, 14.4 kV
2. PAD MOUNTED GEAR SHALL BE INSTALLED AND TESTED IN ACCORDANCE WITH MANUFACTURER'S INSTRUCTIONS AND SPEC SECTIONS B-595-C-A170-16100 AND 16905.
3. PULL BACK EXISTING CONDUCTORS P8300A,B,C @ MH-P51 FROM TRANSFORMER XT-32A-099. CUT CABLES (LENGTH AS REQUIRED) & INSTALL TO NEW PAD MOUNTED GEAR DD-32A-100 IN NEW CONDUIT P-8322 FOR TERMINATION HARDWARE SEE MATERIAL SPECIFICATION B-595-C-A170-16110.
4. INSTALL NEW CONDUCTORS P8304A,B,C FROM NEW PAD MOUNTED GEAR DD-32A-100 TO TRANSFORMER XT-32A-099 VIA MANHOLE MH-P51
5. CONDUIT & CABLE INSTALLATION SHALL BE PER SPECIFICATION B-595-C-A170-16100.
6. CONDUCTORS P8300A,B,C AND P8304A,B,C SHALL BE TESTED AFTER INSTALLATION IN ACCORDANCE WITH SPECIFICATION SECTION B-595-C-A170-16905.

NEW PAD MOUNTED GEAR
INSTALLATION DIAGRAM

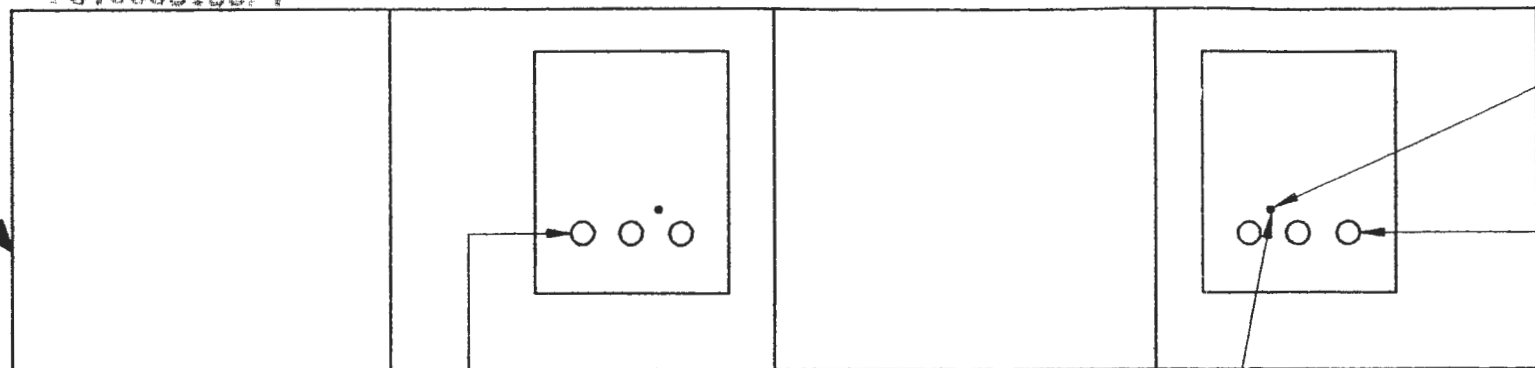
DCN-0188 REV 1

DCN-0188

FLUOR DANIEL	U.S. DEPARTMENT OF ENERGY HANFORD WASTE VITRIFICATION PLANT		DESIGN CHANGE NOTICE		
	DESCRIPTION OF CHANGE: ADD PAD MOUNTED GEAR TO PRIMARY 13.8 kV FEEDER FOR OAB/TOB BUILDING			BASE DOC. NO. H-2-122134 SHT/PG. 1 REV. 3 CR NO. HWVP-1109 DISCIPLINE: ELECTRICAL	
PREPARED BY: <i>A. Sprengel</i>	DATE: 5/16/94	DISCIPLINE ENGINEER: <i>M. Curley</i>	DATE: 5-16-94	DCN - 0188	REV. 1 PAGE 8

9513358.0671

23



500 kcmil BARE COPPER
GROUND CONDUCTOR
(TYPICAL)

LEFT TO RIGHT



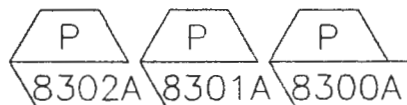
NORTH WALL

EAST WALL

SOUTH WALL

WEST WALL

LEFT TO RIGHT



MH-P50 ELEVATION

DETAIL

20

SCALE: NONE

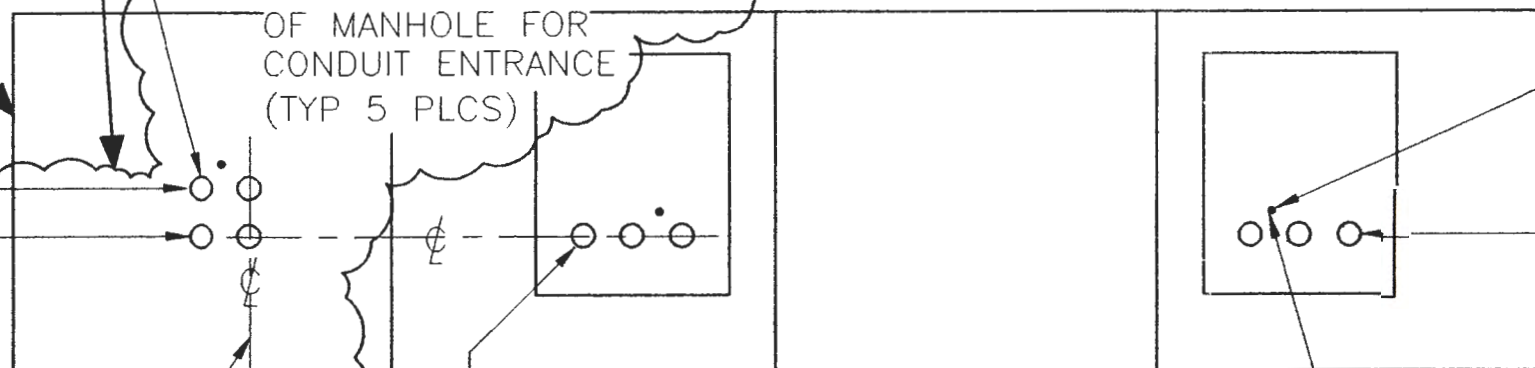
FOR GROUNDING
ASSOCIATED WITH
MANHOLE SEE
G11 122108
(TYPICAL)

NOTE:

THE INFORMATION CONTAINED ON
THIS PAGE TO BE INCLUDED ON
SHEET 4 OF DRAWING H-2-122134
WHICH WILL BE ADDED AT THE
NEXT REVISION.

DCN-0188

23



CORE DRILL NORTH WALL
OF MANHOLE FOR
CONDUIT ENTRANCE
(TYP 5 PLCS)

500 kcmil BARE COPPER
GROUND CONDUCTOR
(TYPICAL)

LEFT TO RIGHT



W. 56825.00

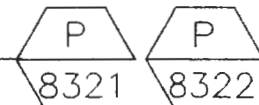
NORTH WALL

EAST WALL

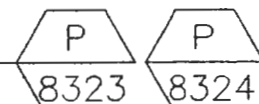
SOUTH WALL

WEST WALL

LEFT TO RIGHT



LEFT TO RIGHT



LEFT TO RIGHT



MH-P51 ELEVATION

DETAIL

21

SCALE: NONE

DCN-0090

FOR GROUNDING ASSOCIATED
WITH MANHOLE SEE
G11 122108
(TYPICAL)



FLUOR DANIEL

U.S. DEPARTMENT OF ENERGY
HANFORD WASTE VITRIFICATION PLANT

DESIGN CHANGE NOTICE

DESCRIPTION OF CHANGE:

ADD PAD MOUNTED GEAR
TO PRIMARY 13.8 KV FEEDER FOR
OAB/TOB BUILDING

BASE DOC. NO. H-2-122134

SHT/PG. 1 REV. 3

CR NO. HWVP-1109

DISCIPLINE: ELECTRICAL

PREPARED BY: *A. Spurgeon*

DATE: 5/16/94

DISCIPLINE ENGINEER: *J. M. Berry*

DATE: 5-16-94

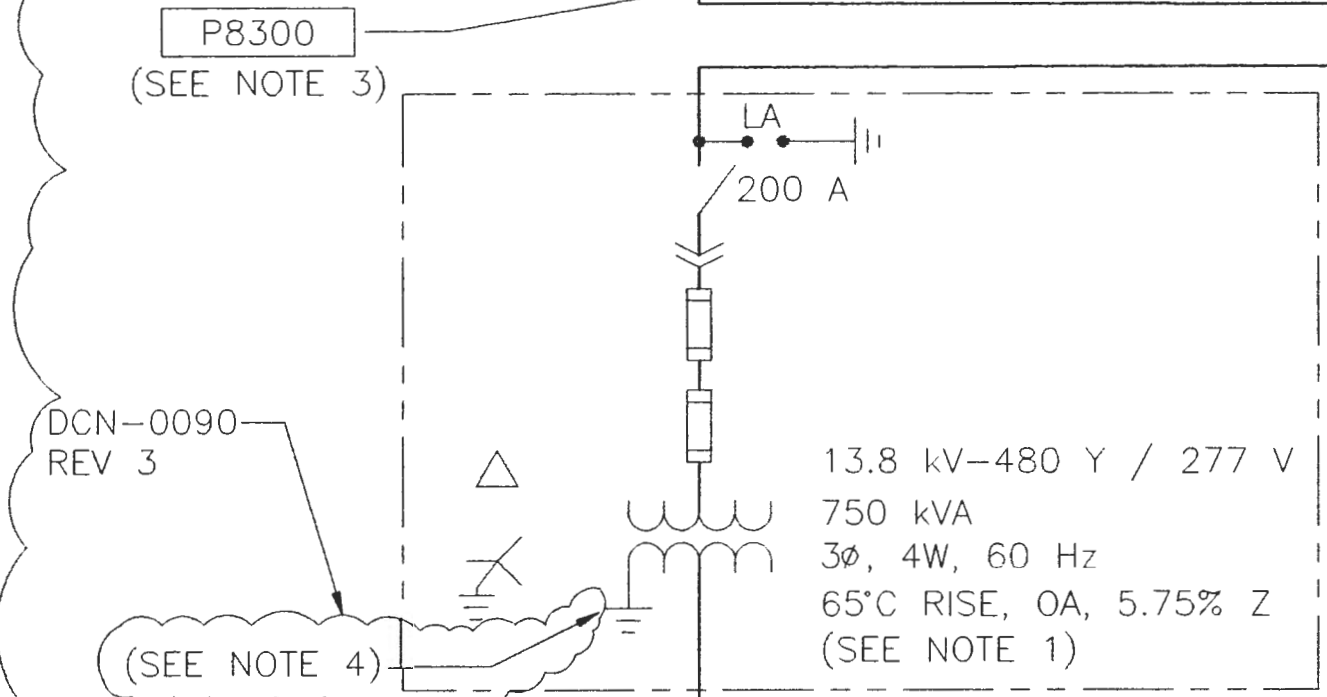
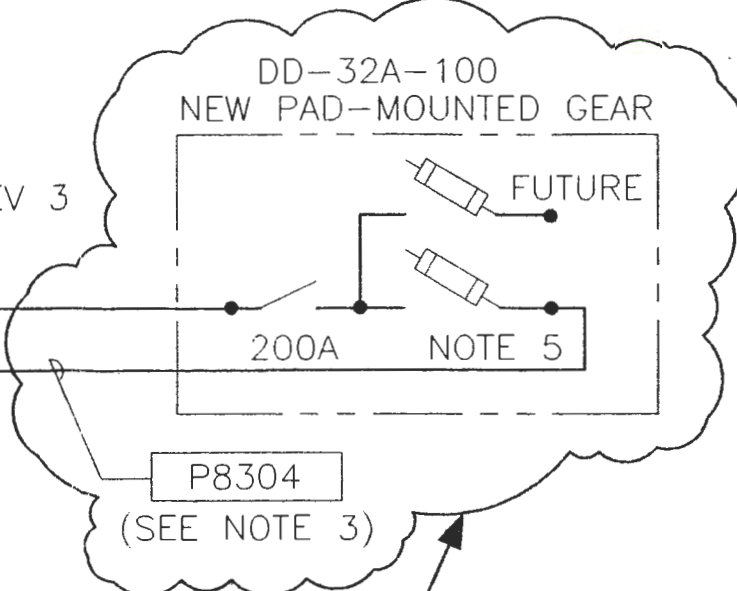
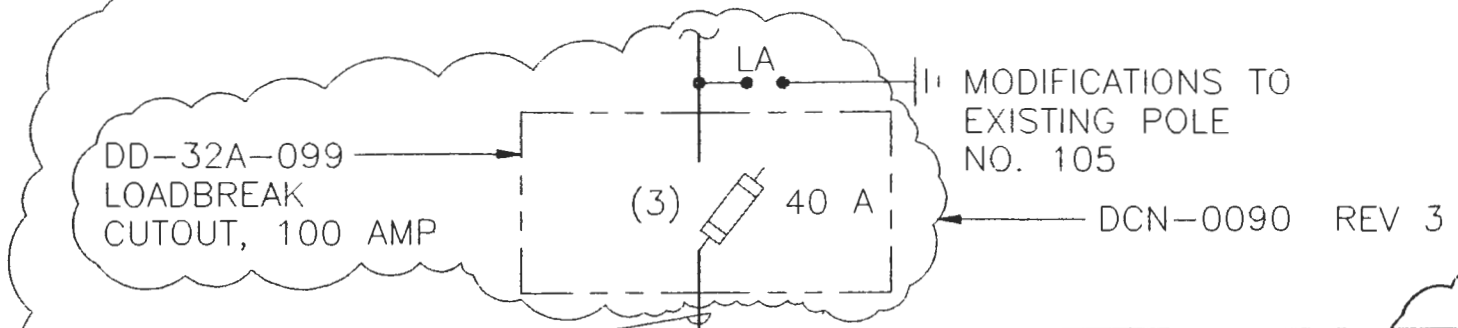
DCN - 0188

REV. 1
PAGE 9

9513458 0672
 OAB/TOB SERVICE ONE LINE DIAGRAM
 EXISTING CKT C8-L7

NOTES:

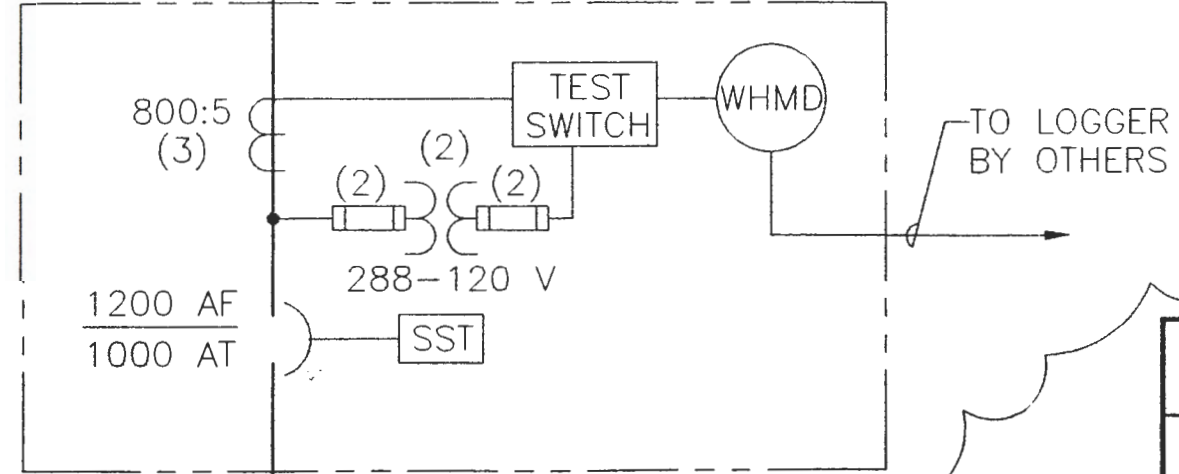
1. UTILITY TRANSFORMER SIZED BY WHC EU, BASED ON A FUTURE DEMAND LOAD OF 500 kVA (REF. RTC-681)
2. TO OAB/TOB SERVICE ENTRANCE EQUIPMENT BY OTHERS.
3. CABLE NUMBERS REFLECT THE ASSIGNED NUMBER ALONG WITH A, B, C SUFFIXES FOR EACH PHASE, N SUFFIX FOR NEUTRAL AND G SUFFIX FOR GROUND IF APPLICABLE. SEE CONDUIT/CABLE SCHEDULE SPECIFICATION SECTION 16111 FOR SPECIFIC WIRE INFORMATION.
4. THE TRANSFORMER NEUTRAL GROUND IS NOT IN ACCORDANCE WITH ARTICLE 250 OF THE NEC.
5. FUSE SIZE & COORDINATION BY WHC EU.



XT-32A-099
 OAB/TOB UTILITY
 PAD MOUNTED
 TRANSFORMER

SB-32A-099
 OAB/TOB UTILITY
 METERING CABINET

P8301
 P8302
 P8303
 (SEE NOTE 3)



NOTE:
 THE INFORMATION CONTAINED ON THIS PAGE TO BE INCLUDED ON SHEET 4 OF DRAWING H-2-122134 WHICH WILL BE ADDED AT THE NEXT REVISION.

FLUOR DANIEL		U.S. DEPARTMENT OF ENERGY HANFORD WASTE VITRIFICATION PLANT		DESIGN CHANGE NOTICE	
DESCRIPTION OF CHANGE: ADD PAD MOUNTED GEAR TO PRIMARY 13.8 KV FEEDER FOR OAB/TOB BUILDING				BASE DOC. NO. H-2-122134 SHT/PG. 1 REV. 3 CR NO. HWVP-1109 DISCIPLINE: ELECTRICAL	
PREPARED BY: <i>A. Spungli</i>		DATE: 5/16/94		DCN - 0188	REV. 1 PAGE 10
DISCIPLINE ENGINEER: <i>W. Albrecht</i>		DATE: 5-16-94			

BY OTHERS
 (SEE NOTE 2)

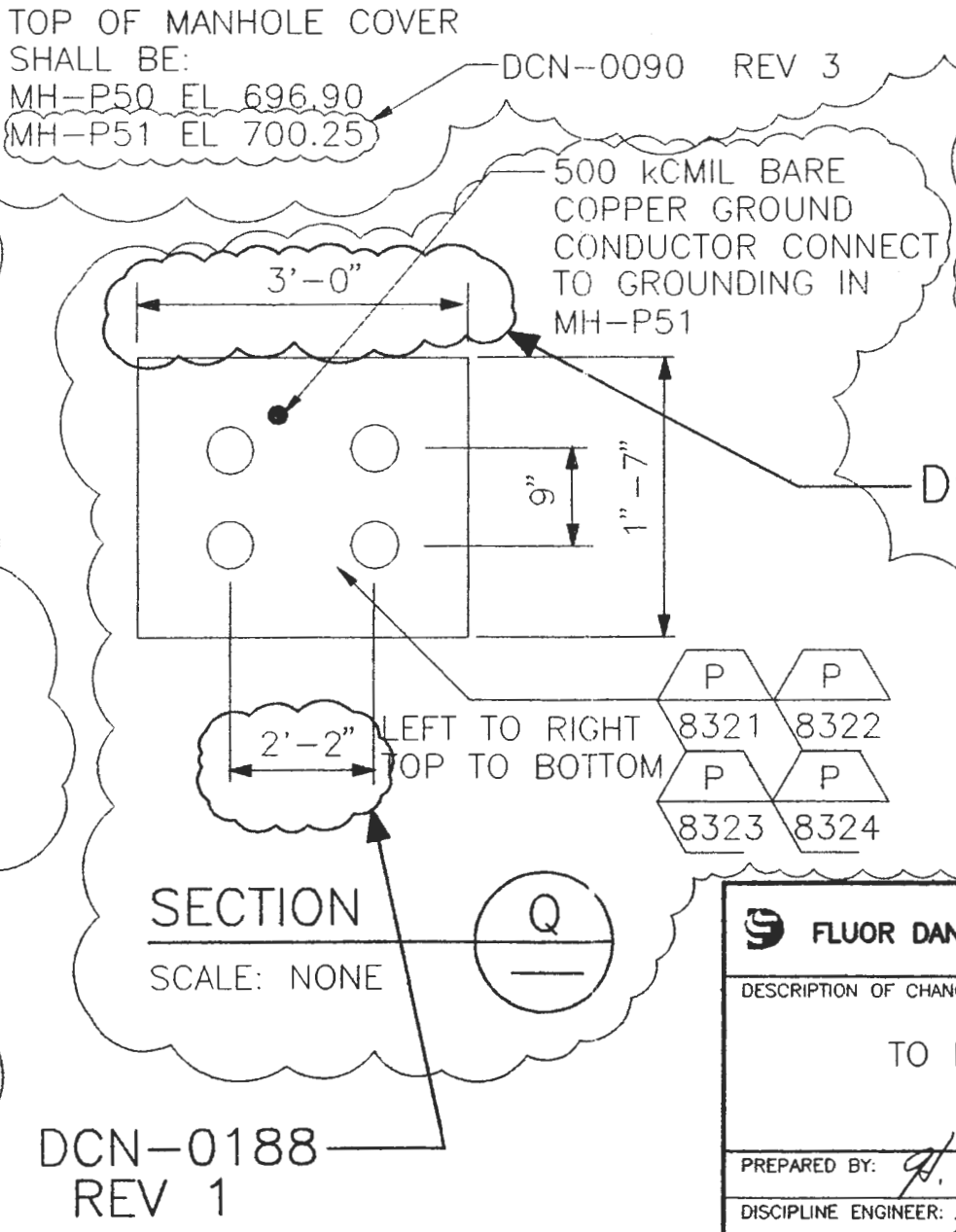
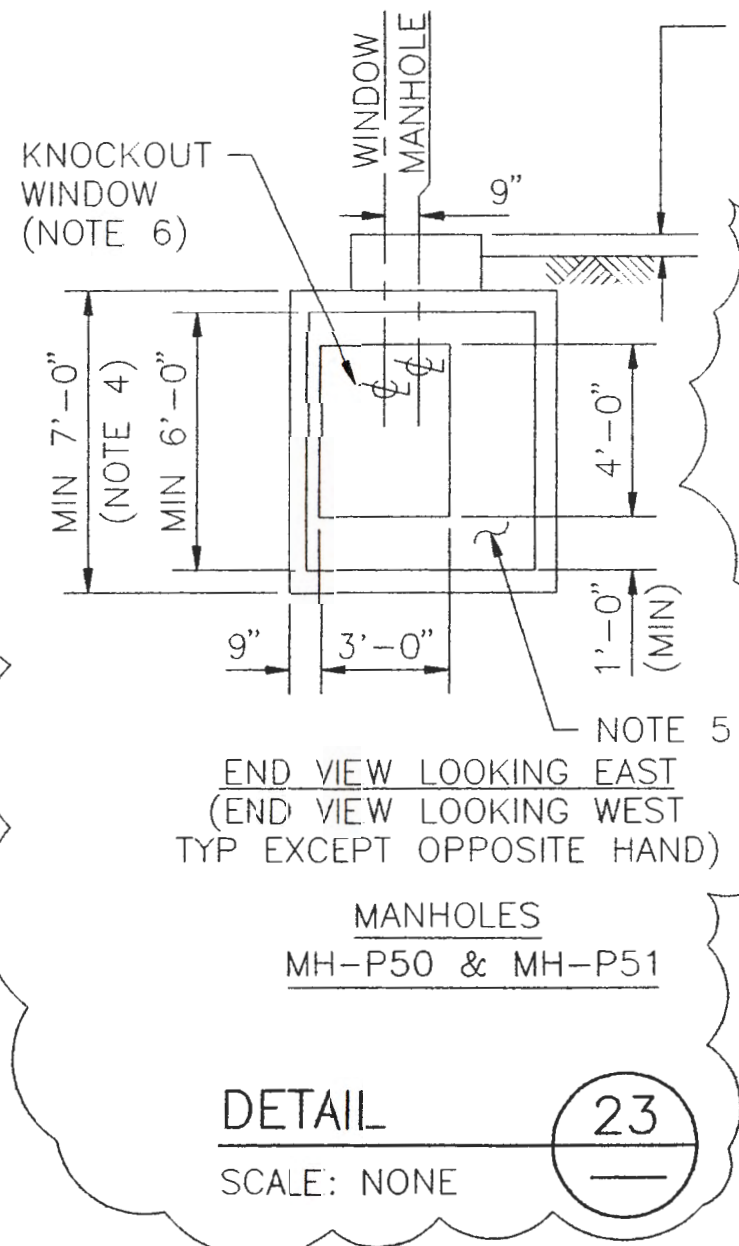
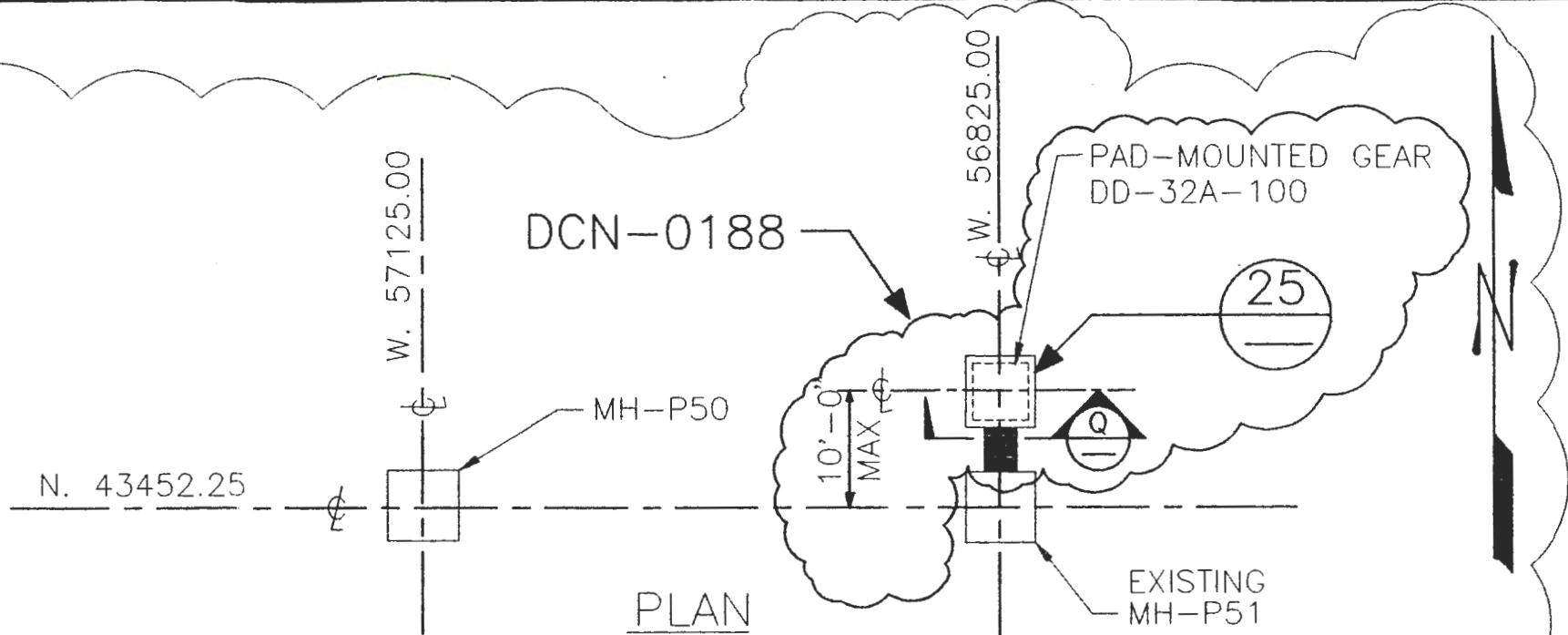
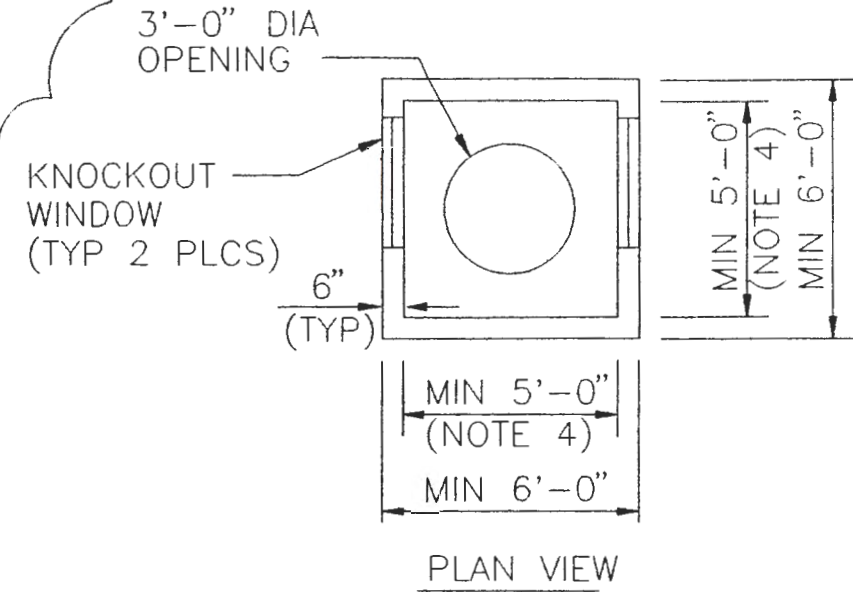
DCN-0090
 REV 3

DCN-0090
 REV 3

DCN-0188

DCN-0188 REV 1

9513358.0673



NOTE:
THE INFORMATION CONTAINED ON THIS PAGE TO BE INCLUDED ON SHEET 4 OF DRAWING H-2-122134 WHICH WILL BE ADDED AT THE NEXT REVISION.

FLUOR DANIEL		U.S. DEPARTMENT OF ENERGY HANFORD WASTE VITRIFICATION PLANT		DESIGN CHANGE NOTICE	
DESCRIPTION OF CHANGE: ADD PAD MOUNTED GEAR TO PRIMARY 13.8 kv FEEDER FOR OAB/TOB BUILDING				BASE DOC. NO. H-2-122134 SHT/PG. 3 REV. 3 CR NO. HWVP-1109 DISCIPLINE: ELECTRICAL	
PREPARED BY: <i>H. Spivey</i>		DATE: 5/16/94		DCN - 0188	
DISCIPLINE ENGINEER: <i>H. Spivey</i>		DATE: 5-16-94		REV. 1 PAGE 11	

9513358 0674

G02 122108

500 kcmil BARE COPPER GROUND CONDUCTOR

DCN-0188 REV 1

LEFT TO RIGHT

P 8323 P 8324

U01 DCN-0090

(TYP)

LEFT TO RIGHT

P 8321 P 8322

COMP-3 COMP-4

COMP-2 COMP-1

1'-4"

1'-4"

2'-2" 2'-5"

B

500 kcmil BARE COPPER GROUND CONDUCTOR

TO MH-P51

DCN-0188 REV 1

PLAN VIEW

DETAIL 25

DCN-0188

G37 DCN-0090

(TYP)

LEFT TO RIGHT

P 8321 P 8322

LEFT TO RIGHT

P 8323 P 8324

SECTION "B-B"



FLUOR DANIEL

U.S. DEPARTMENT OF ENERGY HANFORD WASTE VITRIFICATION PLANT

DESIGN CHANGE NOTICE

DESCRIPTION OF CHANGE:

ADD PAD MOUNTED GEAR TO PRIMARY 13.8 kV FEEDER FOR OAB/TOB BUILDING

BASE DOC. NO. H-2-122134

SHT/PG. 3 REV. 3

CR NO. HWVP-1109

DISCIPLINE: ELECTRICAL

PREPARED BY: *A. Spangoli*

DATE: 5/16/94

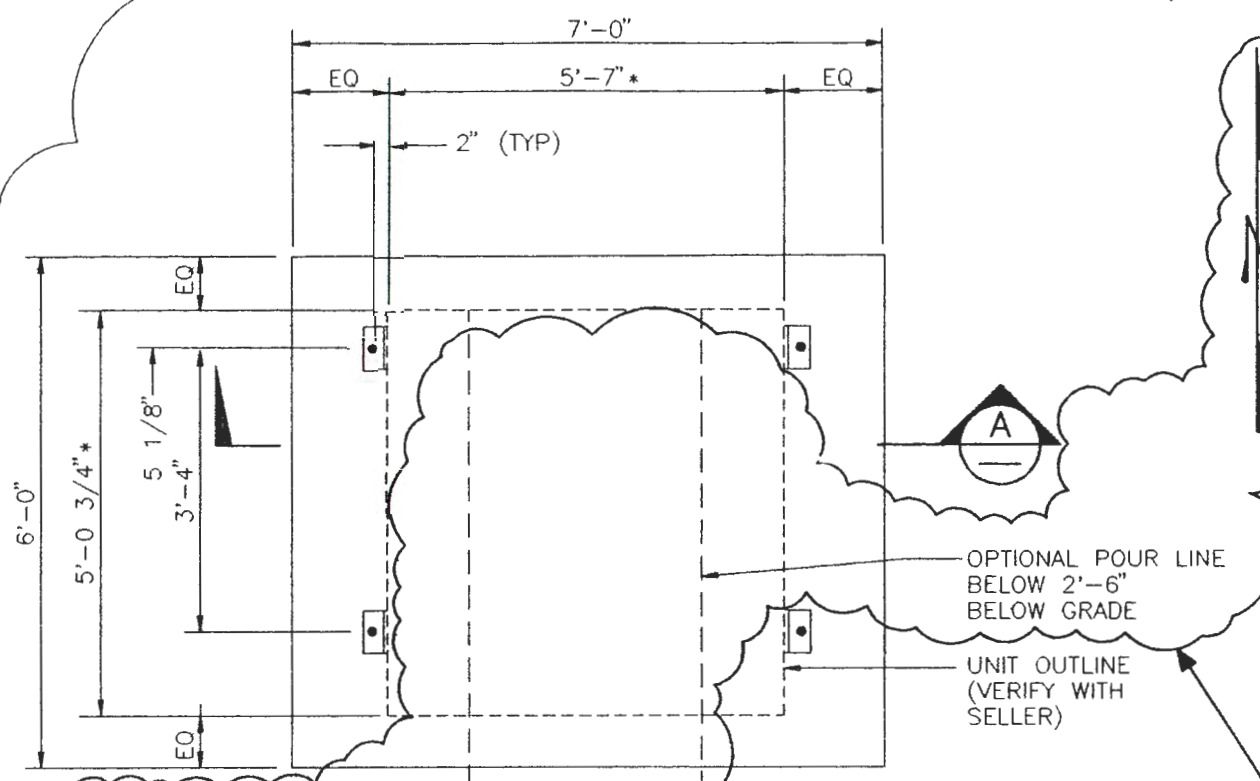
DISCIPLINE ENGINEER: *J. Aldrey*

DATE: 5-16-94

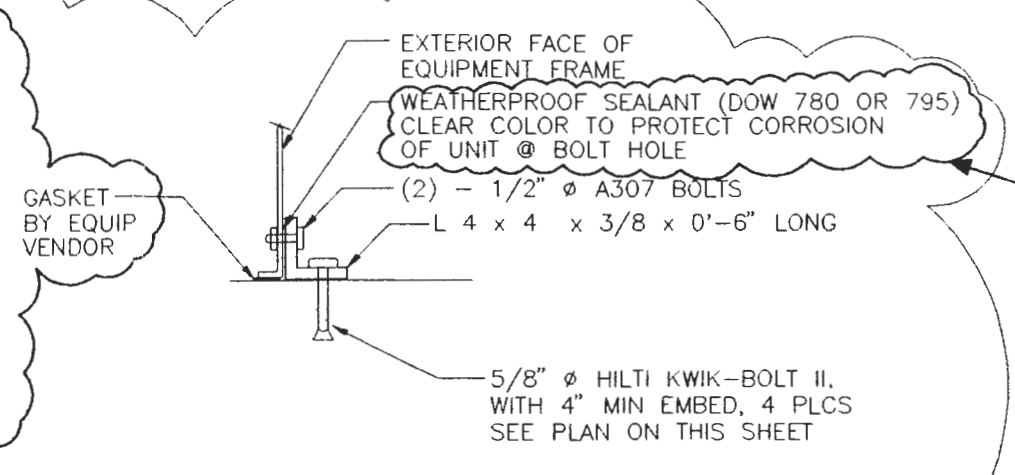
DCN - 0188

REV. 1 PAGE 12

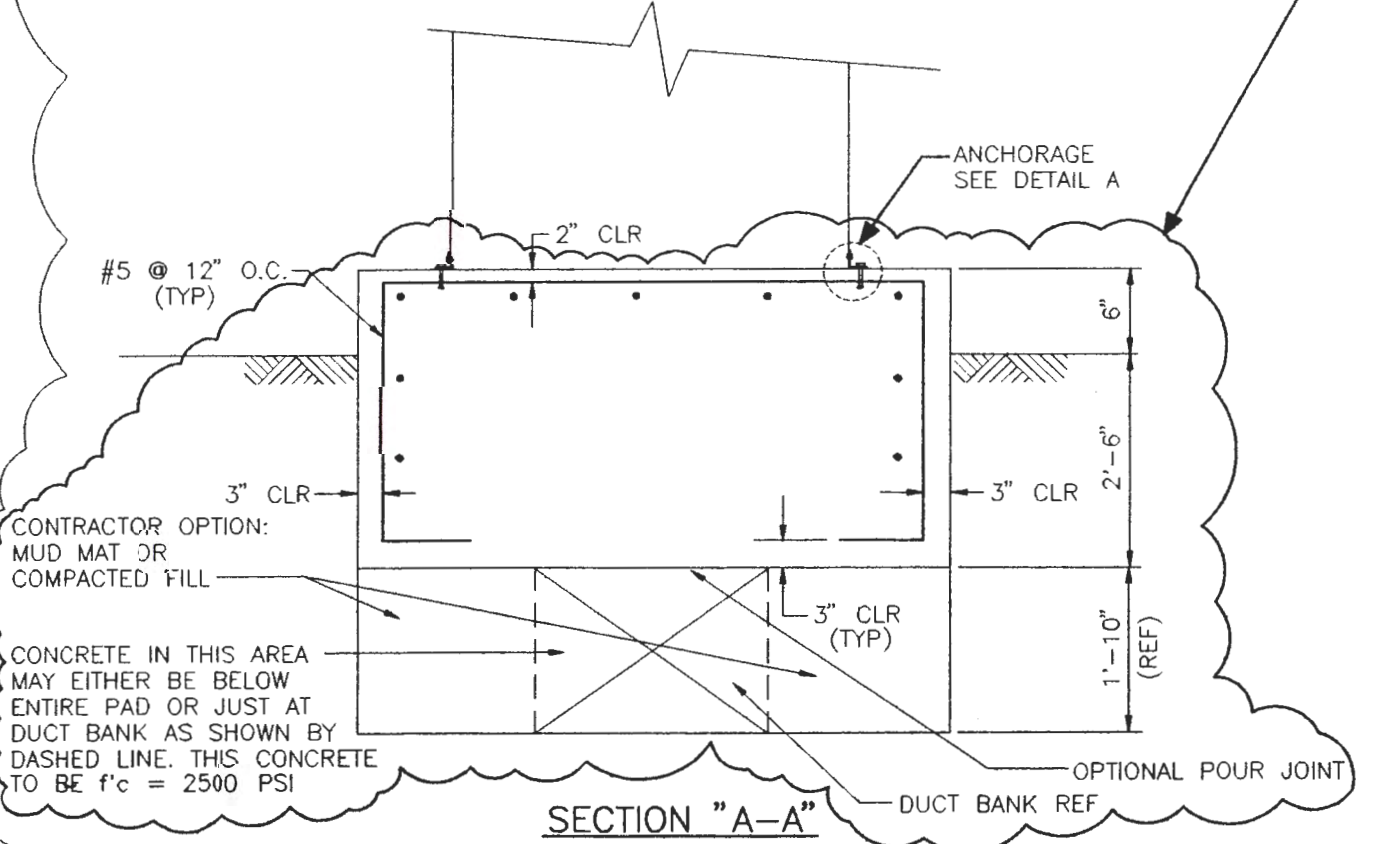
9513358.0675



PLAN VIEW



DETAIL A



SECTION "A-A"

DCN-0188
REV 1

DCN-0188
REV 1

DCN-0188

* TO BE VERIFIED BY SELLER TO CORRESPOND TO ACTUAL EQUIPMENT

NOTES:

1. KWIK-BOLT II SHALL NOT BE INSTALLED UNTIL CONCRETE HAS REACHED $f'c = 2500$ pSI.
2. REINFORCING MAY BE MOVED UP TO 3" FOR CONDUIT BUT AVERAGE SPACING TO STAY AS SHOWN. ALT.: IF A BAR HAS TO BE REMOVED FOR A CONDUIT, ADD EQUIVALENT REIN. ADJACENT TO UNREINFORCED ZONE.
3. SEE SHEET H-2-118060 SHEET 1 FOR STRUCTURAL GENERAL NOTES & TYPICAL DETAILS.

DCN-0188
REV 1

DCN-0188

FLUOR DANIEL	U.S. DEPARTMENT OF ENERGY HANFORD WASTE VITRIFICATION PLANT	DESIGN CHANGE NOTICE		
		DESCRIPTION OF CHANGE: ADD PAD MOUNTED GEAR TO PRIMARY 13.8 Kv FEEDER FOR OAB/TOB BUILDING		BASE DOC. NO. H-2-118063 SHT/PG. 1 REV. 2 CR NO. HWVP-1109 DISCIPLINE: STRUCTURAL
PREPARED BY: <i>J. Spivey</i>	DATE: 5/16/94	DCN - 0188	REV. 1	PAGE 13
DISCIPLINE ENGINEER: <i>D.A. Taylor</i>	DATE: 5/16/94			