

START

9513358.0911

0040937⁷



Mr. John Grantham
State of Washington
Department of Ecology
Nuclear & Mixed Waste Program
P. O. Box 47600
Olympia, WA 98504-7600

FLUOR DANIEL, INC.

Date: July 19, 1994

Reference: Hanford Waste Vitrification Plant
DOE Contract DE-AC06-86RL10838
Fluor Contract 8457

Transmittal No.: WDOE-966

Dear Mr. Grantham:

TRANSMITTAL

We enclosed 2 copy of the items listed below. These are issued per US-DOE request.

Approval Reference Review and Comment DCN-RFC

Response due to Fluor: N/A
Responds to: A160 PACKAGE

NUMBER	REV	DATE	TITLE
DCN - 0069	1	7/13/94	<p>DCN TITLE: VIT. BLDG. FIREWATER PUMP HOUSE FWX & SWX UTILITY STUBOUTS</p> <p>"RELEASED FOR CONSTRUCTION"</p>



Reference: FRP-1468, FUP-887
Distribution:
R. L. Long - DOE-RL, w/0
TWP/AME Corresp Cntrl MSIN A5-10
(A160 PACKAGE), w/0
P. Felise - WHC-RL (MSIN G6-06), w/1
Environmental Data Management Center
(MSIN H6-08), w/1
D. Duncan - US EPA, Region X, w/0
M. D. Talbot, WHC - w/0

Very truly yours,

Nazy Eshraghi

R.S. Poulter
Project Director

RSP:BRE:nre

9513358.0912



FLUOR DANIEL

US DEPARTMENT OF ENERGY
HANFORD WASTE VITRIFICATION PLANT

DESIGN CHANGE NOTICE

DCN -0069

REV 1

PAGE 1 OF 6

DCN TITLE
VIT. BLDG FIREWATER
PUMPHOUSE FWX & SWX
UTILITY STUBOUTS

DATE INITIATED
12/14/93

PACKAGE NO.
CWBS A160

SECTION 1: DESCRIPTION OF CHANGE

RELOCATE FWX AND SWX STUBOUTS FOR THE VIT. BLDG. FIREWATER PUMP HOUSE AND ADJUST SWX VERTICAL ALIGNMENT TO ALLOW FOR THE STUBOUTS. VIT. BLDG. FIREWATER PUMP HOUSE AND TANKS AND ADJACENT DIRECT BURIAL LINE BACKGROUND LOCATIONS HAVE ALSO BEEN UPDATED.

REVISION 1: ADJUST VERTICAL PROFILE OF SWX LINE TO AVOID INTERFERENCE WITH ELECTRICAL DUCTBANK, DELETE COMBINATION AIR RELEASE AND VACUUM VALVE (ARV) AS REQUIRED ON SWX LINE PER DCN-0155 REV 1 AND ADD ARV TO SWX LINE PER THIS DCN REVISION.

- CAUSE OF CHANGE: **REV. 17**
- Field Change Request
 - Supplier Disposition
 - Deficiency Report
 - Design Development
 - Change Request
 - TBD/Hold
 - Other
- CR-HWVP-0856
ICR NO. 00277A
FRR NO. 00642A

FOR LIST OF AFFECTED DOCUMENTS, SEE SECTIONS 6 AND 7.

REV. 1

SECTION 2: EVALUATION

WAPA DWG/SPEC?	IF "YES", ADDITIONAL REVIEW REQUIRED BY:	REVIEWER COMMENTS AND SIGNATURE/DATE
WAPA DWG/SPEC? <input checked="" type="checkbox"/> NO <input type="checkbox"/> YES		
QUALITY LEVEL 1 DWG/SPEC? <input checked="" type="checkbox"/> NO <input type="checkbox"/> YES		
SAFETY CLASS 1 OR 2 DWG/SPEC? <input checked="" type="checkbox"/> NO <input type="checkbox"/> YES		
SYSTEMS ANALYSES AFFECTED? <input checked="" type="checkbox"/> NO <input type="checkbox"/> YES		
MULTI-DISCIPLINE CHANGE? <input checked="" type="checkbox"/> NO <input type="checkbox"/> YES		
DCN Evaluated by: Systems <i>J. Thompson</i>	<i>ADM A. Chow</i>	<i>NO COMMENTS</i> <i>J. Cisambini 12/14/93</i> <i>J. Dwyer 12/14/93</i>

SECTION 3: APPROVED FOR CONSTRUCTION

Originator: *Dennis K. Cisambini* Date: *12/14/93*
 Project/Resident Engineer: *P.J. Bedell* Date: *12-14-93*

SECTION 4: CONCURRENCE

Edward Jacobs 1-6-94 Date
Project Management

Tomer E. Swage 1-10-94 Date
Systems

Alvin Yu 1/10/94 Date
Independent Safety

Bob Kelly 1/6/94 Date
Quality Assurance

Francis Stokes 1-6-94 Date
Configuration Management

SECTION 5: RELEASED FOR CONSTRUCTION

PE STAMP REQUIRED? NO YES

RA Smith 7/13/94 Date
WHC

[Signature] 7/7/94 Date
UCAT

James E. [Signature] 07-07-94 Date
DOE

COMMENTS:



FLUOR DANIEL

US DEPARTMENT OF ENERGY
HANFORD WASTE VITRIFICATION PLANT

DESIGN CHANGE NOTICE

9513358.0913

DCN - 0069

REV

1

DISCIPLINE

CIVIL

PKG. NO.

A160

PAGE

2

PREPARED BY:

Date:

DISCIPLINE ENGINEER:

B. C. ...

Date:

12/14/93

SECTION 6: CONSTRUCTION DOCUMENTS AFFECTED

DOCUMENT NUMBER	SHT/PAGE	REV NO	DOCUMENT NAME	INCLD Y/N	DESCRIPTION OF CHANGE
H-2-117153	1	4	CIVIL, UNDERGROUND UTILITY PLAN	Y	RELOCATED FWX AND SWX STUBOUTS, UPDATED BACKGROUND INFORMATION. REVISION 1: DELETED COMBINATION AIR RELEASE AND VACUUM VALVE (ARV) AS REQUIRED PER DCN-0155 REV 1 AND ADD NEW ARV PER THIS DCN REVISION.
H-2-117161	1	2	CIVIL, UNDERGROUND UTILITIES SECTIONS AND DETAILS	Y	REMOVED FWX STUBOUT ON DETAIL 2.
H-2-117167	1	3	CIVIL, SANITARY SEWER PROFILES	Y	ADDED CONCRETE ENCASEMENT ON SS BECAUSE OF REALIGNED SWX LINE.
H-2-117176	1	2	CIVIL, SWX AND RWX PIPE PROFILES	Y	RELOCATED FWX AND SWX STUBOUTS, REALIGNED SWX VERTICAL ALIGNMENT. REVISION 1: ADJUSTED VERTICAL PROFILE OF SWX LINE TO AVOID INTERFERENCE WITH ELECTRICAL DUCTBANK, DELETED SWX COMBINATION AIR RELEASE AND VACUUM VALVE (ARV) REQUIRED AS PER DCN-0155 REV 1 AND ADDED SWX ARV PER THIS DCN REVISION.

SECTION 7: NON-CONSTRUCTION DOCUMENTS AFFECTED

This section references affected items such as P&IDs or calculations/analyses, but they are generally not included in DCN package.

DOCUMENT NUMBER	SHT/PAGE	REV NO	DOCUMENT NAME	DESCRIPTION OF CHANGE
NONE				

PER DCN-0069, REV 1

UTILITY INTERFACE COORDINATE TABLE

UTILITY DESCRIPTION	NORTH	WEST	BOP	DWG REFERENCE
A SANITARY WATER	42982.00	55797.00	695.77	FUTURE
B FIREWATER	42982.00	55792.00	697.62	FUTURE
C FWX-6"-500-101	42841.00	55783.10	701.75	H-2-124033
D FWX-10"-500-003	42778.42	55762.06	701.50	H-2-124033
E DRX-4"-530-046	42801.50	STA 6+47.70 55751.07	FOF 707.5	H-2-124033
F SWX-4"-490-013	42786.00	55782.56	FOF 707.75	H-2-124033
G FWX-8"-500-042	43035.93	55922.39	695.50	H-2-117078
H SANITARY WATER	43035.93	55895.39	696.20	H-2-117078
J FIREWATER	43637.00	55916.89	687.30 INV	H-2-117078

PLANT CONSTRUCTION ROAD CWB-430
RELOCATED UTILITY COORDINATES & ELEVATIONS FOR ITEMS A & B PER DCN 0069

ADDED FWX AND SWX STUBOUTS PER DCN 0069

UPDATED LOCATION OF VIT BLDG FIREWATER PUMPHOUSE AND TANKS PER DCN 0069

HANFORD PLANT GRID
200 EAST AREA DATUM

DELETED FWX AND SWX STUBOUTS PER DCN 0069

CONSTRUCTION NOTES

- 12 - GATE VALVE WITH POST INDICATOR AND POST BARRICADE 16
117163
- 13 - BURIED GATE VALVE WITH VALVE BOX PER DETAIL 17
117163
- 20 - 10" X 10" X 4" TEE
- 31 - CONCRETE ENCASEMENT PER DETAIL 40
117172
- 50 - 12" X 12" X 6" TEE

PER DCN-0069, REV 1

PER DCN-0069, REV 1

RELOCATED DB PER DCN 0065

FIREWATER PUMPHOUSE

STO TANK



GRAPHIC SCALE
1" = 40'

FLUOR DANIEL	U.S. DEPARTMENT OF ENERGY HANFORD WASTE VITRIFICATION PLANT		DESIGN CHANGE NOTICE	
	DESCRIPTION OF CHANGE RELOCATED FWX AND SWX STUBOUTS FOR VIT BLDG FIREWATER PUMPHOUSE AND UPDATED BACKGROUND INFORMATION DELETED AND ADDED ARV'S AS SHOWN		BASE DOC. NO. H-2-117153 SHT/PG. 1 REV. 4 CR NO. 0856 DISCIPLINE: CIVIL	REV. 1 PAGE 3
PREPARED BY: <i>Dennis Mast...</i> DISCIPLINE ENGINEER: <i>Dennis Mast...</i>	DATE: 12/14/93 DATE: 12/14/93	DCN - 0069		

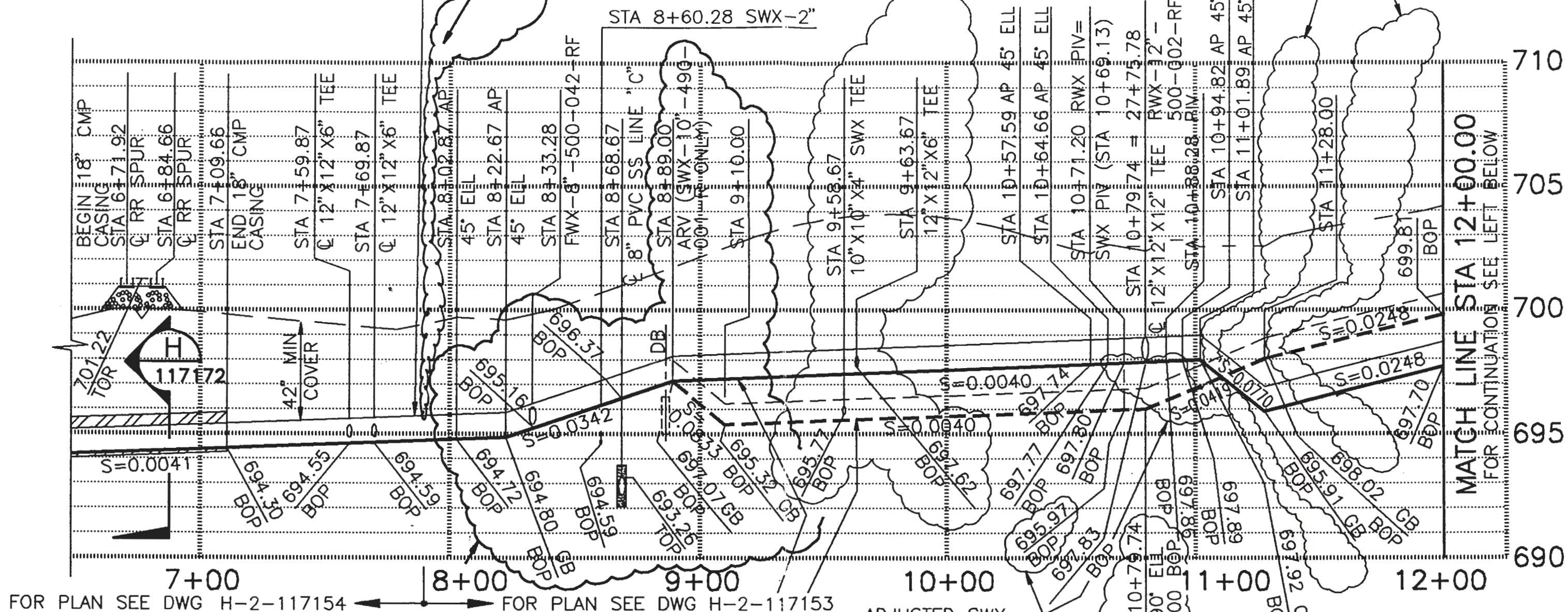
9513358.0915

DELETED ARV AS REQUIRED PER DCN-155, REV 1 AT STA 7+96.87

ADDED FWX & SWX STUBOUTS PER DCN 0069

DELETED FWX & SWX STUBOUTS PER DCN 0069

RWX-12"-500-013-RF (SWX-10"-490-001-R BEYOND IN JOINT TRENCH)



FOR PLAN SEE DWG H-2-117154

FOR PLAN SEE DWG H-2-117153

REVISED VERTICAL ALIGNMENT AS SHOWN AND ADDED ARV AT STA 8+89.00 PER DCN-0069, REV 1

RWX-12"-500-013-RF SWX-10"-490-001-R

PER DCN-0069, REV 1

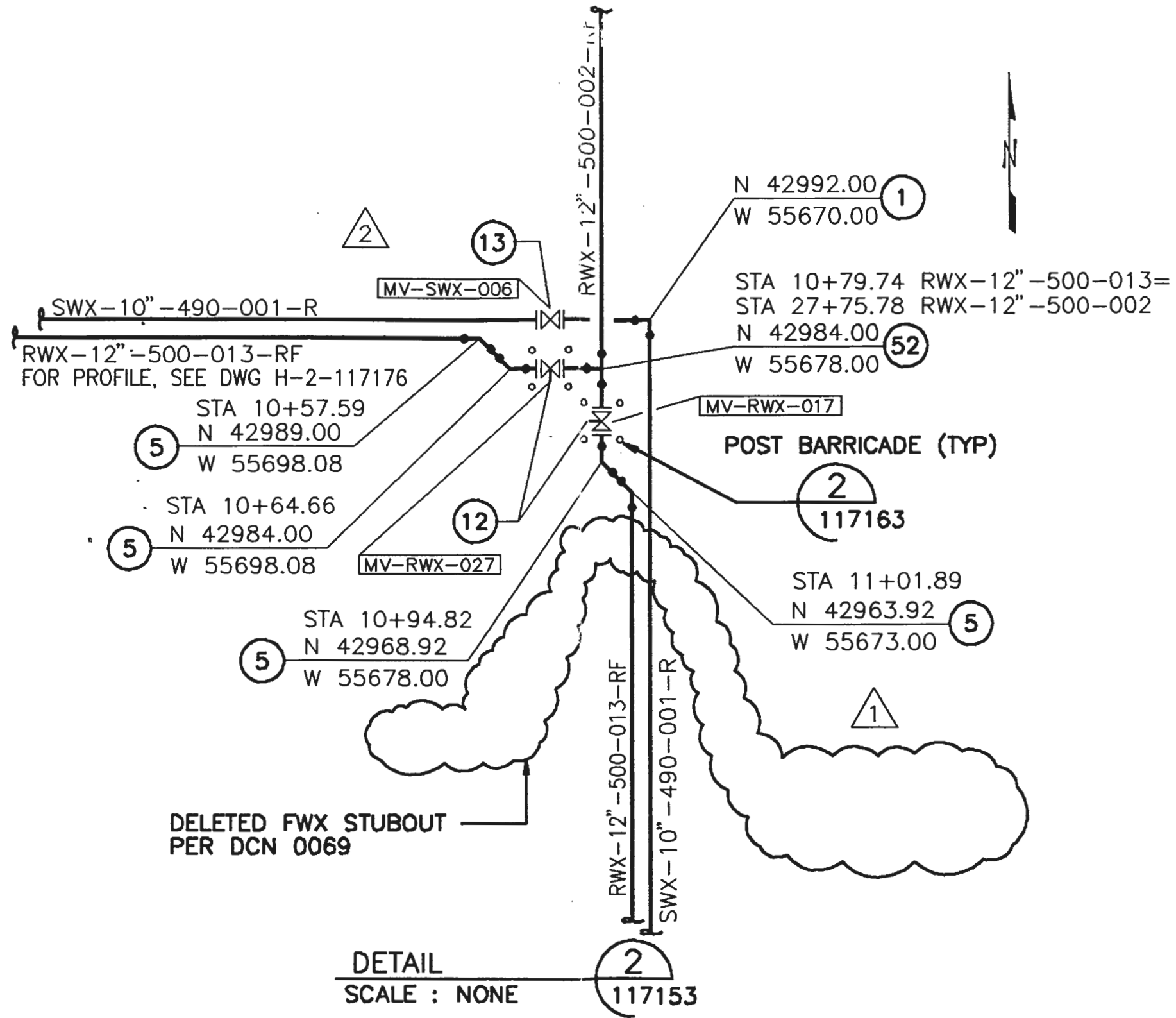
PROFILE

RWX-12"-500-013-RF

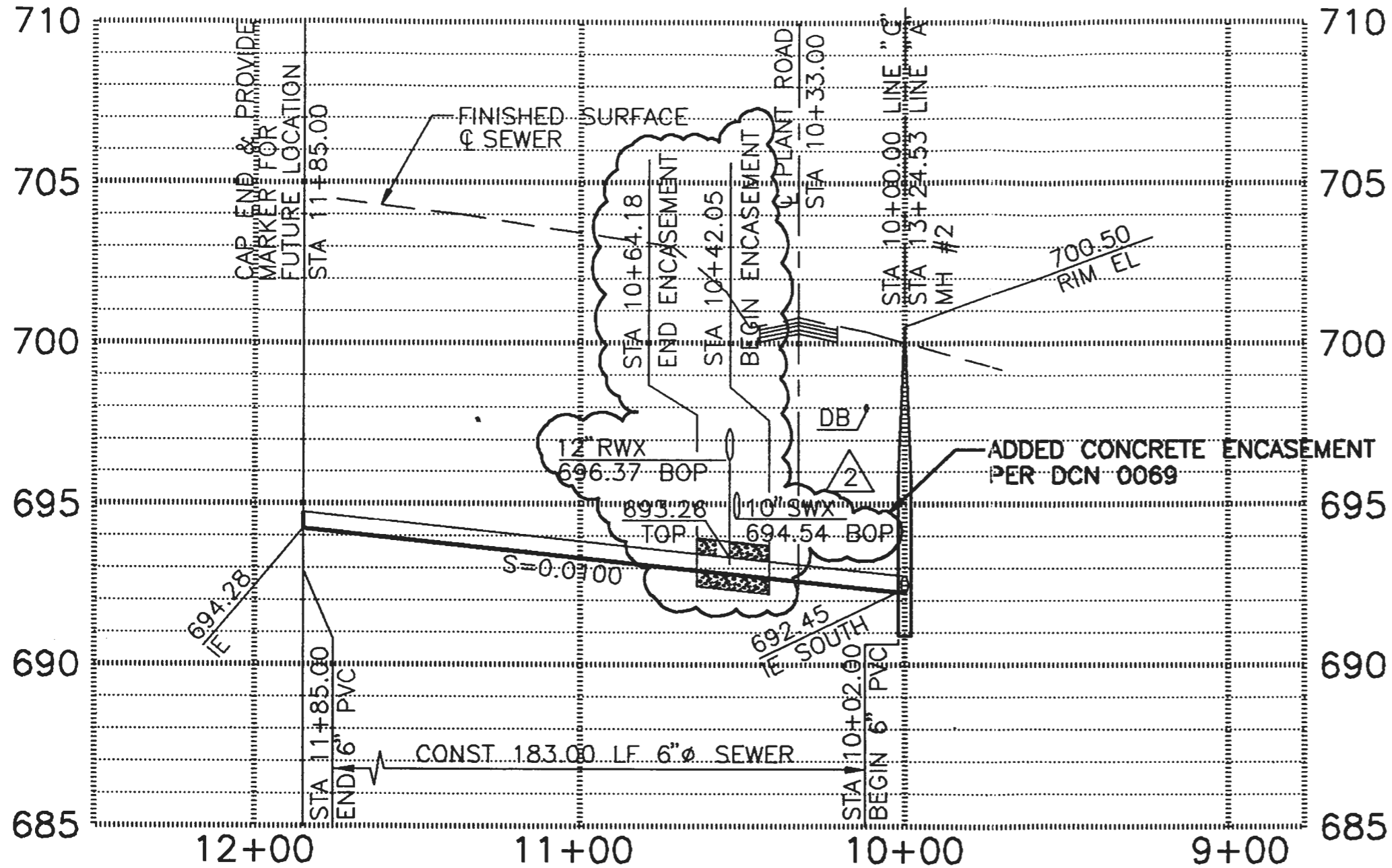
HORIZ. 1"=40' VERT. 1"=4'

ADJUSTED SWX VERTICAL ALIGNMENT PER DCN 0069

FLUOR DANIEL	U.S. DEPARTMENT OF ENERGY HANFORD WASTE VITRIFICATION PLANT		DESIGN CHANGE NOTICE	
	DESCRIPTION OF CHANGE RELOCATED FWX AND SWX STUBOUTS FOR VIT BLDG FIREWATER PUMP HOUSE AND REALIGNED SWX VERTICAL ALIGNMENT DELETED ARV AND REVISED PROFILE AS SHOWN			BASE DOC. NO. H-2-117176 SHT/PG. 1 REV. 2 CR NO. 0856 DISCIPLINE: CIVIL
PREPARED BY: <i>Dennis R. Masterson</i> DISCIPLINE ENGINEER: <i>Dennis R. Masterson</i>	DATE: 12/14/93	PREPARED BY: <i>Dennis R. Masterson</i> DISCIPLINE ENGINEER: <i>Dennis R. Masterson</i>	DATE: 12/10/93	DCN - 0069 REV. 1 PAGE 4



FLUOR DANIEL	U.S. DEPARTMENT OF ENERGY HANFORD WASTE VITRIFICATION PLANT		DESIGN CHANGE NOTICE	
	DESCRIPTION OF CHANGE DELETED FWX STUBOUT ON DETAIL 2		BASE DOC. NO. H-2-117161 SHT/PG. 1 REV. 2 CR NO. 0856 DISCIPLINE: CIVIL	
PREPARED BY: <i>Demir Mustafa</i> DISCIPLINE ENGINEER: <i>Demir Mustafa</i>	DATE: <i>12/14/93</i>	DCN - 0069	REV. 1	PAGE 5



FOR PLAN SEE DWG H-2-117153
LINE "C" PROFILE
 SCALE: HORIZ. 1"=40'
 VERT. 1"=4'

FLUOR DANIEL	U.S. DEPARTMENT OF ENERGY HANFORD WASTE VITRIFICATION PLANT		DESIGN CHANGE NOTICE	
	DESCRIPTION OF CHANGE ADDED CONCRETE ENCASEMENT ON SANITARY SEWER BECAUSE OF REALIGNED SWX LINE		BASE DOC. NO. H-2-117167 SHT/PG. 1 REV. 3 CR NO. 0856 DISCIPLINE: CIVIL	
PREPARED BY: <i>Demil Martin</i>	DATE: 12/14/93	DCN - 0069	REV. 1	PAGE 6
DISCIPLINE ENGINEER: <i>Demil Martin</i>	DATE: 12/10/93		ACAD	