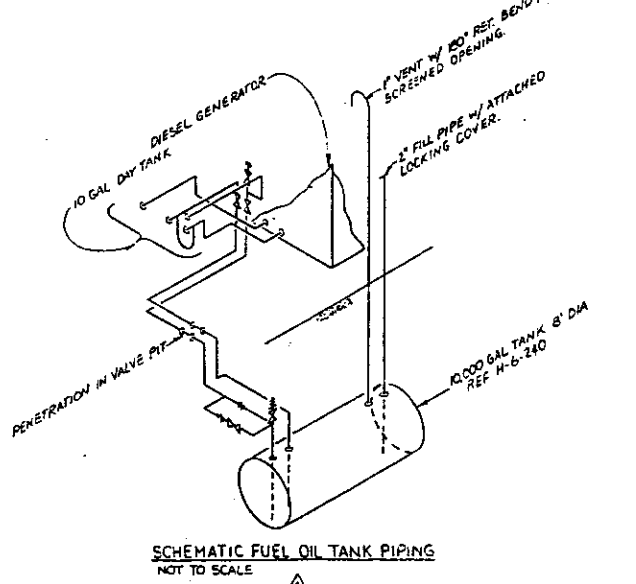
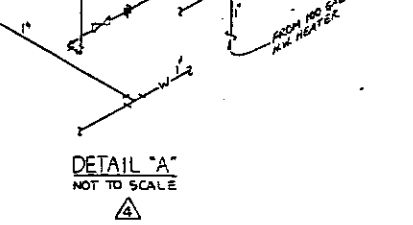
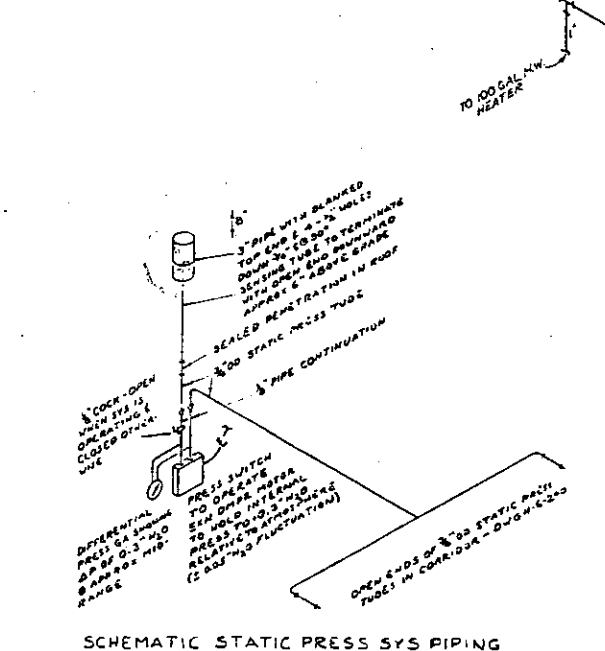
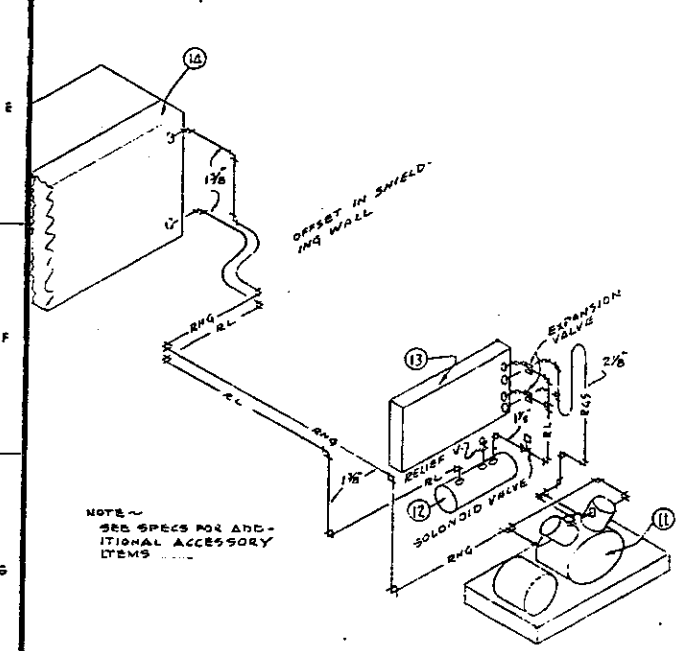
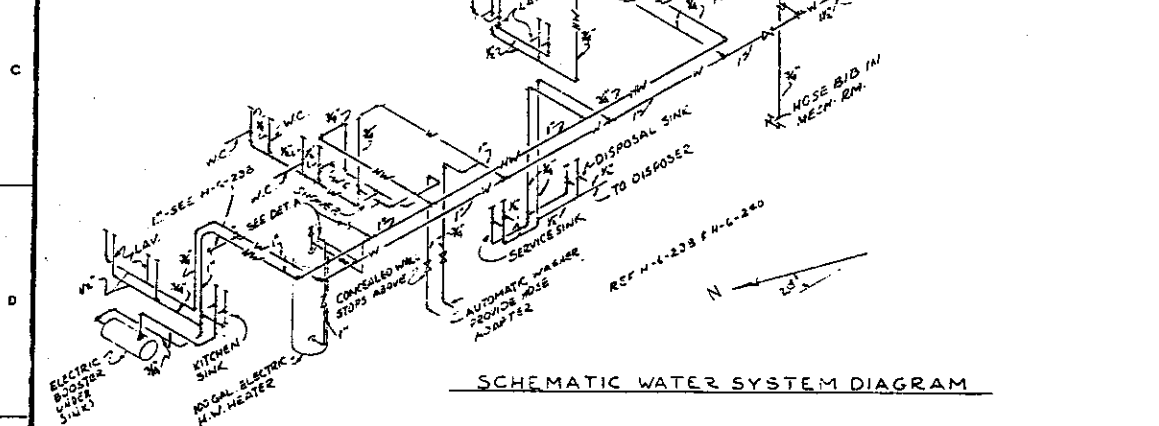
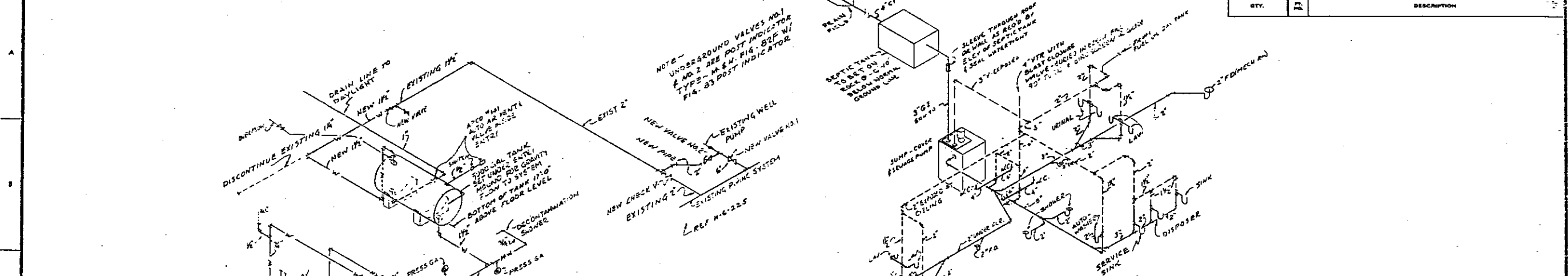


1	2	3	4	5	6	7	8	9	10	11	12	13
---	---	---	---	---	---	---	---	---	----	----	----	----



H-6-239 7/12



4		ISSUE & FIELD VERIFICATION. ISSUED FOR AS-BUILT PER UNIT.	DATE	BY	CHKD	DATE	BY	5	H-6-241	MECH EQUIP DET
3		CHECKED FOR OS-BUILTS.	DATE	BY	CHKD	DATE	BY	4	H-6-240	EQUIP ROOM ARRGT & DET
2		CHECKED FOR OS-BUILT	DATE	BY	CHKD	DATE	BY	3	H-6-238	PLMB, HEATING & VENT PLAN
1		MOD. WASTE & VENT DIAGRAM	DATE	BY	CHKD	DATE	BY	2	H-6-237	DWG INDEX & PLOT PLAN
1		CON SPEC	DATE	BY	CHKD	DATE	BY	1	H-6-236	CON SPEC

APPROVED FOR CONST.	APPROVED FOR PURCHASE	APPROVED FOR DESIGN
DATE	DATE	DATE
BY	BY	BY

SCALE	NONE
U. S. ATOMIC ENERGY COMMISSION	MANFORD ATOMIC PRODUCTS OPERATION
GENERAL	ELECTRIC
PIPING DIAGRAMS	EMERG. RELOCATION
6652 L	8500 F 8500
H-6-239	