

# START

0032752  
19

Final

**Meeting Minutes Transmittal/Approval**  
**Unit Manager's Meeting: 200 Aggregate Area/200 Area Operable Units**  
**740 Stevens Center, Room 1200, Richland, Washington**  
**September 29, 1993**

FROM/APPROVAL: *Paul M. Pak* Date 11-17-93  
Paul M. Pak, 200 Aggregate Area Unit Manager, RL (A5-19)

APPROVAL: *Paul R. Beaver* Date 11/17/93  
Paul R. Beaver, 200 Aggregate Area Unit Manager, EPA (B5-01)

APPROVAL: *Dib Goswami* Date 11/17/93  
Dib Goswami, 200 Aggregate Area Unit Manager, WA Dept of Ecology

Meeting Minutes are attached. Minutes are comprised of the following:

- Attachment #1 - Meeting Summary
- Attachment #2 - Attendance Sheet
- Attachment #3 - Agenda
- Attachment #4 - Action Item Status List
- Attachment #5 - 200 Area Biota Sampling 1993 Status Report
- Attachment #6 - 200-BP-11 Operable Unit and 216-B-3 Main Pond Work/Closure Plan Schedule



Prepared by: *Kay Kimmel* Date: 11-17-93  
Suzanne Clarke, Kay Kimmel, GSSC (B1-42)

Concurrence by: *Curt Wittreich* Date: 11-17-93  
Curt Wittreich, WHC Coordinator (H6-03)

9413092.0696

**Attachment #1**  
**Unit Manager's Meeting: 200 Aggregate Area/200 Area Operable Units**  
**September 29, 1993**

**Meeting and Summary of Commitments and Agreements**

**1. SIGNING OF THE AUGUST 200 AREA UNIT MANAGER'S MEETING MINUTES:**

Meeting minutes were reviewed and approved with no changes.

**2. ACTION ITEM UPDATE. See Attachment 4 for status:**

No Action Items open.

**3. NEW ACTION ITEMS (INITIATED September 29, 1993):**

No new action items were initiated.

**4. INFORMATION ITEMS:**

- Status 200-BP-11 Operable Unit - Rhett Tranbarger made available to the regulators the draft project schedules for this Operable Unit (see attachment #6). A Data Quality Objectives scoping meeting for integrating RCRA and CERCLA in the work plan will be held on October 8, at the EPA Conference Room.
- Status 200-UP-1 Operable Unit - Brian Innis provided the status of well testing activities. Dib Goswami requested more information concerning vertical profiling by the October Unit Manager's Meeting. A meeting is scheduled for 2:00 on September 30 at the EPA conference room on wells 22-20 and 19-8.
- Status of 200-ZP-1 - Dan Parker provided the update on the 200-ZP-1 operable unit. A scoping meeting will be held at 1:30 on September 30, at the EPA Conference room.
- Status 200-BP-5 Operable Unit - Dave Erb provided the status of the 200-BP-5 OU.
- Update Biota Sampling - Stephen Weiss presented the status of the biota sampling as described in attachment #5.

2690-7606146  
9413092.0697

200 Aggregate Area Unit Manager's Meeting  
Official Attendance Record  
September 29, 1993

Please print clearly and use black ink

PRINTED NAME	ORGANIZATION	O.U. ROLE	TELEPHONE
Kay Kimmel	DAMES & MOORE	RL SUPPORT	376-1985
Pamela Innis	EPA	OIL MANAGER	376-4919
Paul Pak	RL	O.U. Manager	376-4798
Diana Sickle	WHE	Program Support	372-3141
James Consort	Dames Moore	RL Support	3765011
Nancy Uziemblo	Ecology	O.U.M.	736 3014
Dave Holland	Ecology	OUM	736-3027
D. Goswami	Ecology	OUM	736-3015
R. Carlson	WHC	200/300 Area mgr	376-9027
Bob McLeod	DOE	200-BP-11 OUMgr	372-0026
Suzanne Clarke	DAMES & MOORE	RL Support	376-8189
Chris P... ..	Ecology	Ecology Support	736-3047
JEFF PHILLIPS	Ecology	UM	736-3011
Steve Cross	WHE		459 6675
Paul Pak	DOE	UM	376-4798
Tom Juvet	PNL	PROGRAM OFFICE	375-2710
Dave Einar	EPA	Unit Mgr	509-376-3883
Audree De Angeles	PRC	EPA Support	206 624 2692
Dave Erb	WHC	200-BP-5 Tech Coord	372-1402
JULIA HALL	DEPT. OF WILDLIFE	Ecology Support	736-3028
Bhett Tranbarger	WHC	200-BP-11 Tech Coord	372-1258
Michael Frank	WHC	200-BP-1 Asst Coord	376 2731
P. Evan Dressel	PNL	6W Surveillance	376-8341
THICK CLINE	ECOLOG	Hydrogeo. Support	206) 438-1556

8590-2608146

**Attachment #3**  
**Unit Manager's Meeting: 200 Aggregate Area/200 Area Operable Units**  
**September 29, 1993**

**Agenda**

**200 Area Activities**

- **Status - Curt Wittreich**
- **Status 200-BP-11 - Rhett Tranbarger**
- **Status 200-BP-5 - Dave Erb**
- **Status 200-UP-1 - Brian Innis**
- **Status 200-ZP-1 - Danny Parker**
- **Update Biota Sampling - Stephen Weiss**

6690-7608116  
9413092-0699

Attachment #4

**Action Item Status List**  
**Unit Manager's Meeting: 200 Aggregate Area/200 Area Operable Units**  
**September 29, 1993**

---

Item No.	Action/Source of Action	Status
2AAMS.8	EPA to develop a position concerning the proposed agreement in principle specifying milestone documents for 200-ZP-1, 200-UP-1 and 200-BP-5 Operable Units. Action: Doug Sherwood	Closed 08/25/93.

---

9473092-0700

9413092.0701

# **200 Area Biota Sampling 1993**

## **Status Report**

### **Unit Manager's Meeting, September 29, 1993**

**Purpose:**

**Provide "real world" data  
to help in evaluating  
Ecological Risk Assessment results**

## **Five sites sampled:**

**two riparian waste sites**

**216-B-3**

**216-T-4**

**two terrestrial waste sites**

**216-A-24**

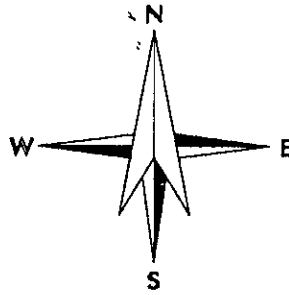
**216-U-11**

**one control**

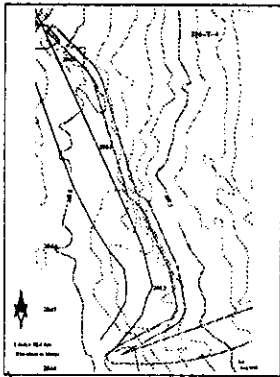
**Saddle Mtn. Pond**



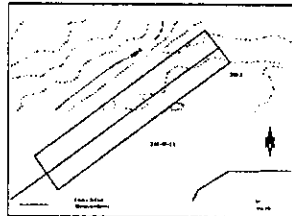
# 200 AREA BIOTA SAMPLING LOCATIONS



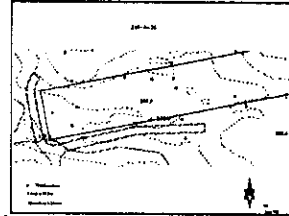
**216-T-4**



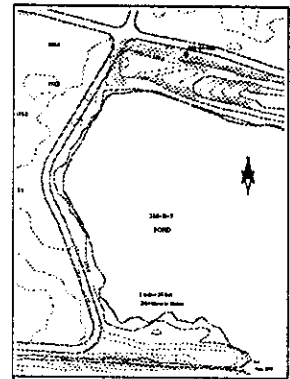
**216-U-11**



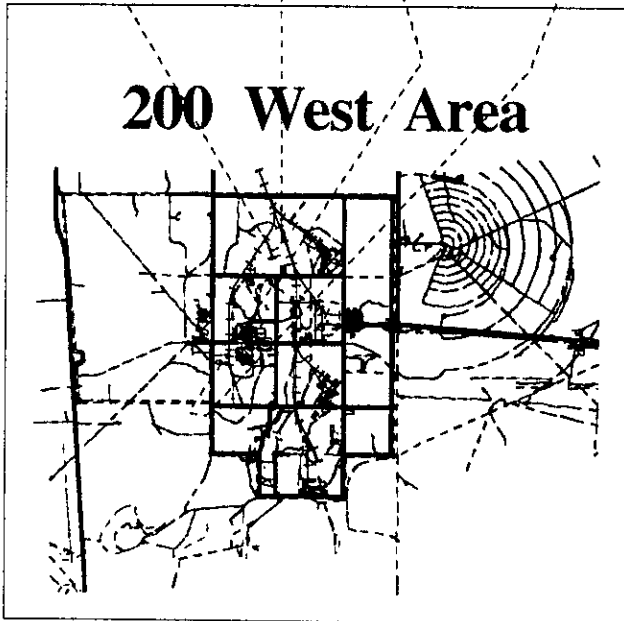
**216-A-24**



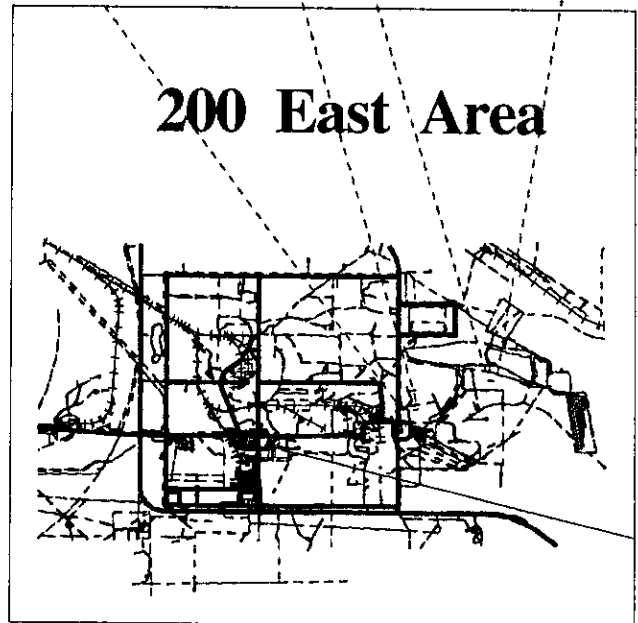
**216-B-3**



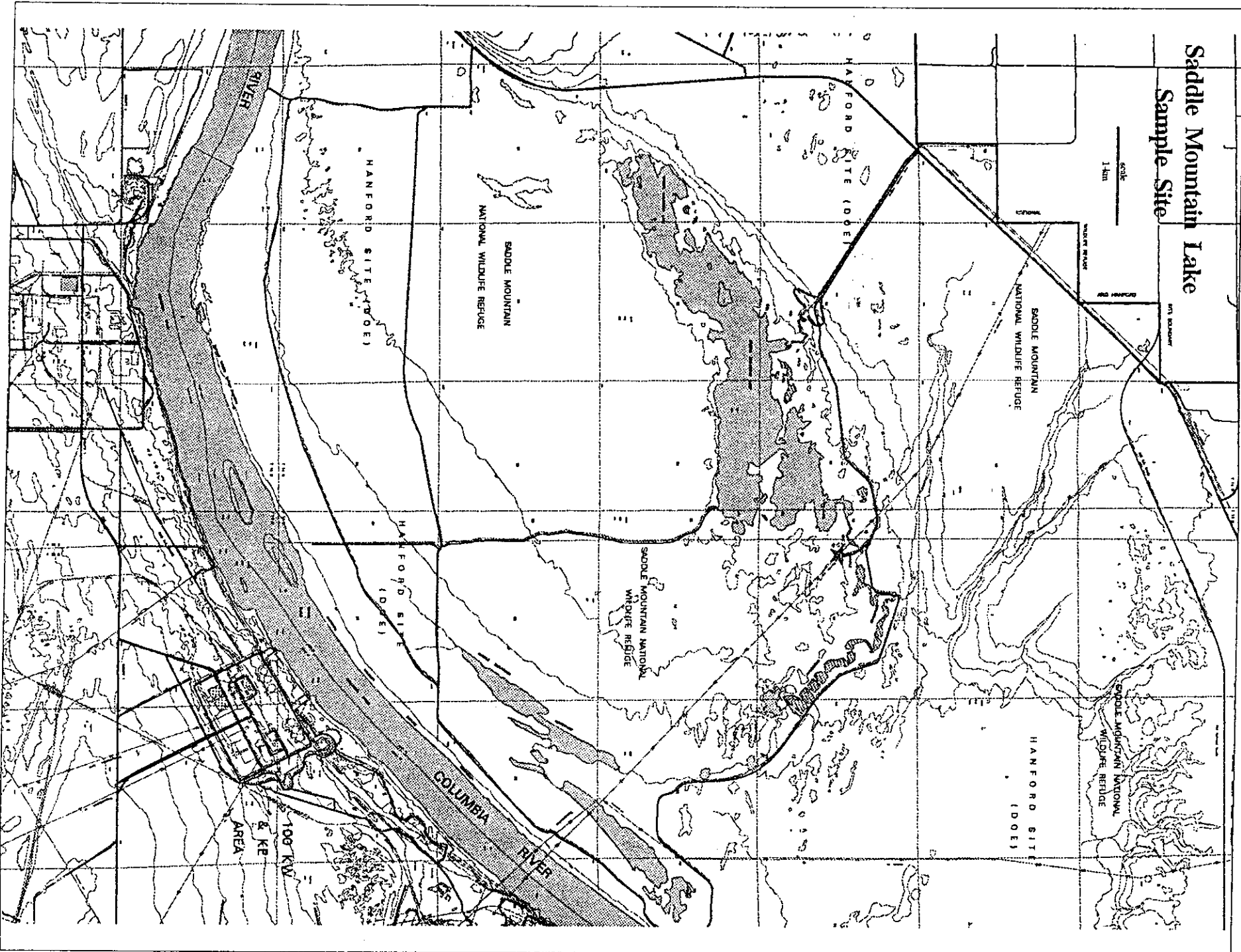
**200 West Area**



**200 East Area**



4020-2608113  
9413092-0704



# Saddle Mountain Lake Sample Site

SCALE  
1 km

# 68 samples total

## 216-B-3

4 soil

4 plant

cattail, bulrush, willow

6 mouse

4 deer mice

2 pocket mice

1 insect

(darkling beetles,  
grasshoppers,  
dragonflies, etc)

**216-T-4****4 soil****4 plant****cattail, bulrush, willow****6 mouse****4 deer mice****2 pocket mice****1 insect**

**216-A-24**

**4 soil**

**4 plants**

**Russian thistle, cheatgrass**

**Siberian wheatgrass**

**4 pocket mice**

**1 insect**

**216-U-11****4 soil****4 plants****Russian thistle,****Siberian wheatgrass****4 pocket mice****1 insect**

**Control****2 soil****5 plants****cheatgrass, willow, cattail****Russian thistle, bulrush****4 mice****2 deer mice****2 pocket mice****1 insect**

**Additional Sampling  
(Through PNL's  
Site-Wide Monitoring Program)**

**2 deer**

**muscle, bone, liver**

**2 pigeons**

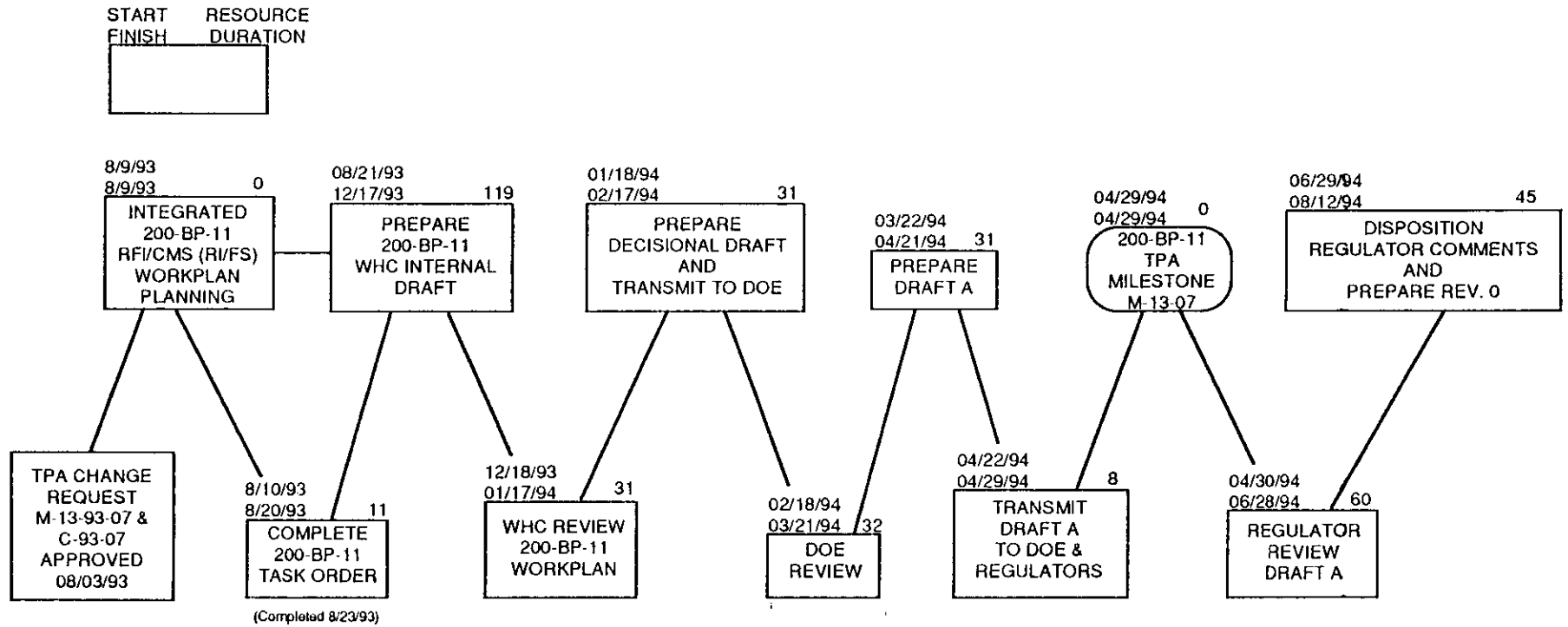
**muscle, bone, feces**

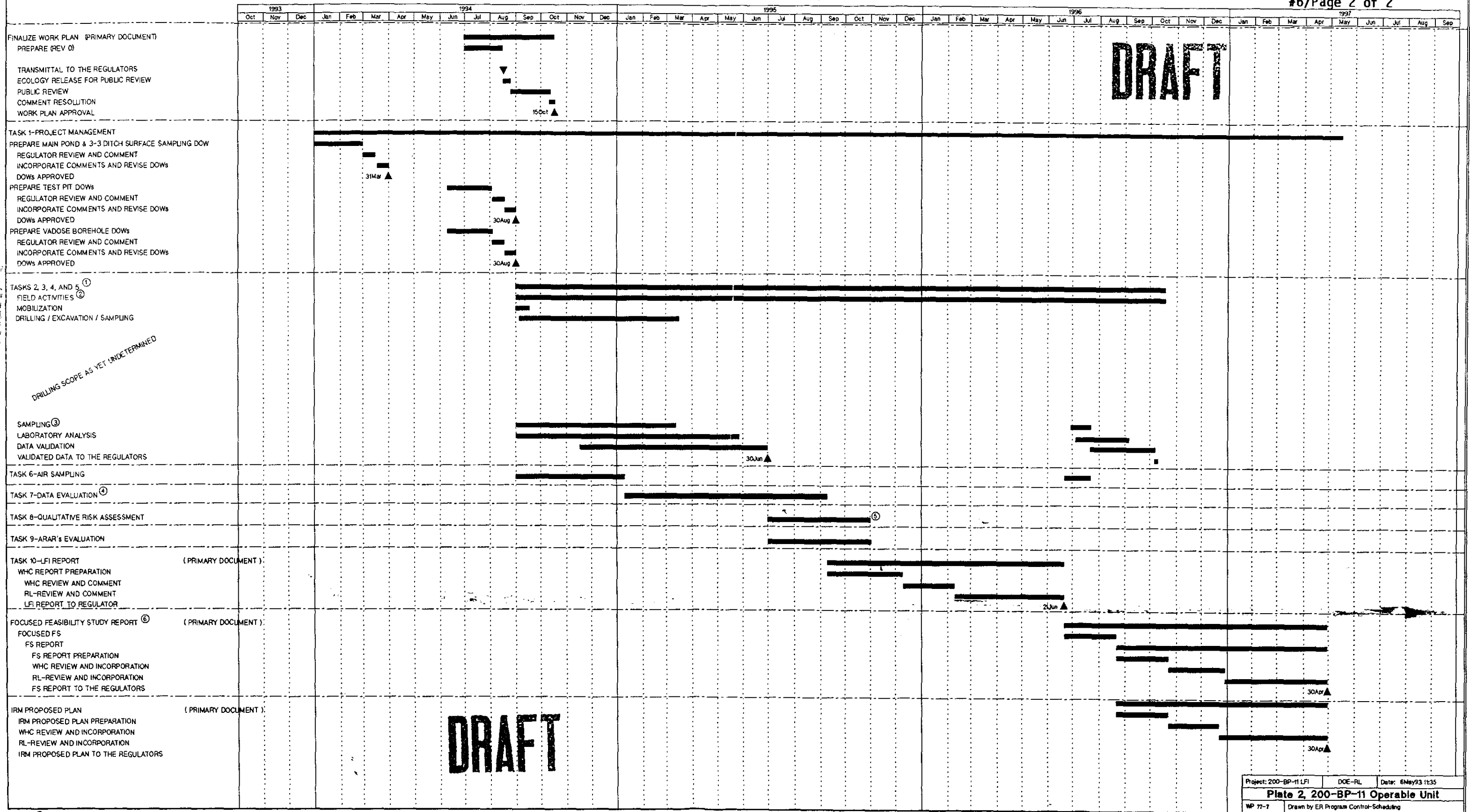
**raptor pellets**

**(on hold until 300 Area lab set up)**



## 200-BP-11 OPERABLE UNIT AND 216-B-3 MAIN POND WORK/CLOSURE PLAN SCHEDULE





DRAFT

DRAFT

① TASK 2: SOURCE CHARACTERIZATION; TASK 3: GEOLOGIC INVESTIGATION; TASK 4: SURFACE WATER SEDIMENT INVESTIGATION; TASK 5: VADOSE ZONE INVESTIGATION

② NON-INTRUSIVE ACTIVITIES (e.g. SURFACE RADIATION SURVEYS, R.L.S. LOGGING IN EXISTING WELLS, SURFACE GEOPHYSICS, AND SURFACE SAMPLING) WILL COMMENCE PRIOR TO THE APPROVAL OF THE DOW'S

③ ASSUMES LAST SAMPLE FROM BOREHOLE MAY BE TRU WHICH ALLOWS FOR A 100 DAY TURN AROUND.

④ DOES NOT INCLUDE CYCLE FOR ADDITIONAL CHARACTERIZATION BASED ON DATA EVALUATION

⑤ ASSUMES CONTRACTOR DRAFT WILL BE SUPPLIED TO RL AND THE REGULATORS CONCURRENTLY

⑥ ASSUMES NO TREATABILITY TESTS

Distribution

Unit Manager's Meeting: 200 Aggregate Area/200 Area Operable Units  
September 29, 1993

9413092.0714

Julie K. Erickson /Paul Pak . . . . . DOE-RL, ERD (A5-19)  
Mike Thompson . . . . . DOE-RL, EAP/RPB (A5-15)  
Diane Clark . . . . . DOE-RL, TSD/SSB (A5-55)  
Mary Harmon . . . . . DOE-HQ (EM-442)

Doug Sherwood . . . . . 200 Aggregate Area Manager, EPA (B5-01)  
Brian Drost . . . . . USGS, Support to EPA  
Audree DeAngeles . . . . . PRC, Support to EPA

Dib Goswami . . . . . WDOE (Kennewick)  
Larry Goldstein . . . . . WDOE (Lacey)

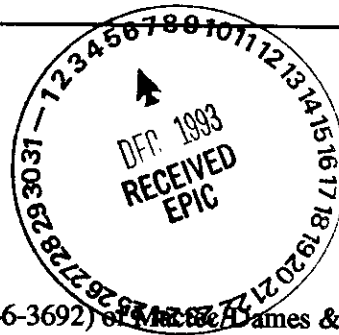
Lynn Albin . . . . . Washington Dept. of Health

Curt Wittreich . . . . . WHC (H6-03)  
~~Tom Wintezak~~ . . . . . Program Manager, WHC (H6-27)  
Mel Adams (Please route to:) . . . . . WHC (H6-01)  
    Rich Carlson . . . . . WHC (H6-03)  
    M.J. Galgoul . . . . . WHC (H6-03)  
L.D. Arnold . . . . . WHC (B2-35)  
Diana Sickle . . . . . WHC (H6-27)  
Chris Widrig (Please route to:) . . . . . PNL (K1-21)  
    Wayne Martin . . . . . PNL (K1-19)  
    Mark Hanson . . . . . PNL (K1-51)  
    Roy Gephart . . . . . PNL (K1-22)  
    Steve Slate . . . . . PNL (K1-19)  
    Joan Keller . . . . . PNL (K1-21)  
    Ben Johnson . . . . . PNL (K1-78)

---

Original Sent To: ADMINISTRATIVE RECORD: 200 AAMS and 216-B-3 Pond  
System, Care of EPIC, WHC (H6-08)

---



Please inform Suzanne Clarke (946-3690) or Kay Kimmel (946-3692) of deletions or additions to the distribution list.