

RECEIVED
AUG 0 8 2016

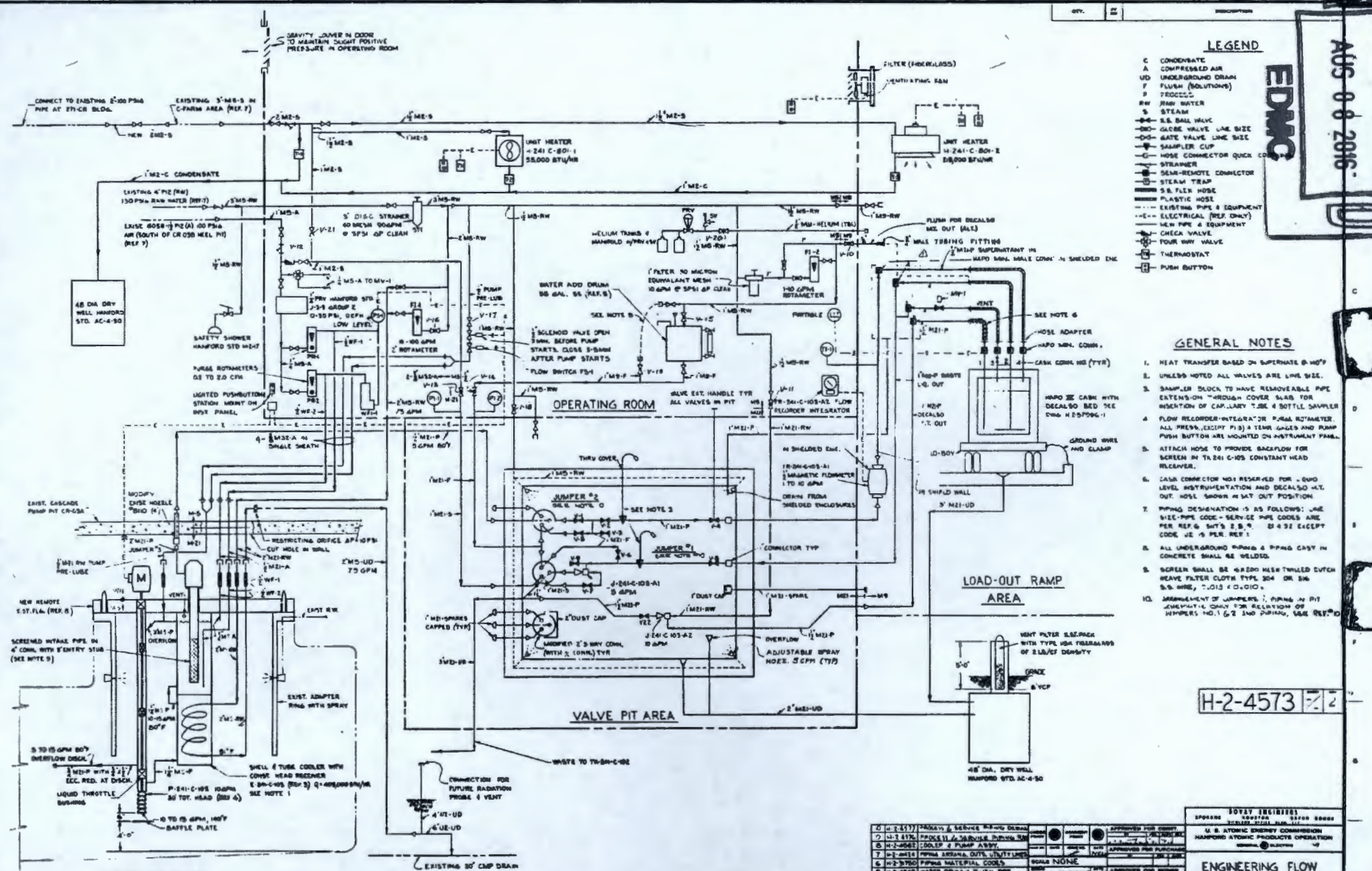
EDMC

LEGEND

- C CONDENSATE
- A COMPRESSED AIR
- UD UNDERGROUND DRAIN
- F FURNISH (SOLUTIONS)
- D TROUBLE
- RW RAW WATER
- S STEAM
- S.S. BALL VALVE
- GATE VALVE LINE SIZE
- GATE VALVE LINE SIZE
- SAMPLER CUP
- HOSE CONNECTOR QUICK COUPLER
- STRAINER
- SEMI-REMOTE CONNECTOR
- STEAM TRAP
- S.S. FLEX HOSE
- PLASTIC HOSE
- EXISTING PIPE & EQUIPMENT
- ELECTRICAL (REF ONLY)
- NEW PIPE & EQUIPMENT
- CHECK VALVE
- FOUR WAY VALVE
- THERMOSTAT
- PUSH BUTTON

GENERAL NOTES

1. HEAT TRANSFER BASED ON SUPERHEAT @ 400°
2. UNLESS NOTED ALL VALVES ARE LINE SIZE.
3. SAMPLER BLOCK TO HAVE REMOVABLE PIPE EXTENSION THROUGH COVER SLAB FOR INSERTION OF CAP-LARY TUBE & BOTTLE SAMPLER.
4. FLOW RECORDER-INTEGRATOR & PUMP ROTAMETER ALL PRESS. EXCEPT P1 B) 4 THERM. GAUGES & PUMP PUSH BUTTON ARE MOUNTED ON INSTRUMENT PANEL.
5. ATTACH HOSE TO PROVIDE BACKFLOW FOR SCREEN IN T241-C-103 CONSTANT HEAD RECEIVER.
6. CASE CORRECTOR WAS RESERVED FOR C-103 LEVEL INSTRUMENTATION AND DECALOS H.T. OUT. HOSE SHOWN IN SAT. OUT POSITION.
7. PIPING DIMENSION IS AS FOLLOWS: LINE SIZE PIPE CODE - SERV-22 PIPE CODES LINE PER REF. & SHT'S 2, 3, 9. Ø 4.52 EXCEPT CODE UC 19 PER REF. 1.
8. ALL UNDERGROUND PIPING & PIPING CAST IN CONCRETE SHALL BE WELDED.
9. SCREEN SHALL BE 48" Ø Ø 1/2" TYPED DUTCH WEAVE FILTER CLOTH TYPE 304 OR 316 S.S. W/ 20-100 (C-103).
10. INSTALLMENT OF LUMBERS, PIPING IN PIT JUMPERS, ETC. ONLY FOR RELATION OF DIMENSIONS NO. 1 & 2 DURING USE ONLY.



TANK 241-C-103

H-2-4573

| DESIGN & SERVICE PIPING DRAWING | | APPROVED FOR CONSTRUCTION | | APPROVED FOR OPERATION | |
|---------------------------------|----------|---------------------------|------|------------------------|------|
| 1 | H-2-4573 | DESIGNED BY | DATE | APPROVED BY | DATE |
| 2 | H-2-4573 | CHECKED BY | DATE | APPROVED BY | DATE |
| 3 | H-2-4573 | DESIGNED BY | DATE | APPROVED BY | DATE |
| 4 | H-2-4573 | DESIGNED BY | DATE | APPROVED BY | DATE |
| 5 | H-2-4573 | DESIGNED BY | DATE | APPROVED BY | DATE |
| 6 | H-2-4573 | DESIGNED BY | DATE | APPROVED BY | DATE |
| 7 | H-2-4573 | DESIGNED BY | DATE | APPROVED BY | DATE |
| 8 | H-2-4573 | DESIGNED BY | DATE | APPROVED BY | DATE |
| 9 | H-2-4573 | DESIGNED BY | DATE | APPROVED BY | DATE |
| 10 | H-2-4573 | DESIGNED BY | DATE | APPROVED BY | DATE |

| 1957 (REVISED) | |
|---|------|
| ENGINEERING | DATE |
| DESIGNED BY | DATE |
| CHECKED BY | DATE |
| APPROVED BY | DATE |
| U. S. ATOMIC ENERGY COMMISSION HANFORD ATOMIC PRODUCTS OPERATION | |
| ENGINEERING FLOW DIAGRAM | |
| C-FARM CESIUM LOAD-OUT FACILITY | |
| E-241-CR | |
| H-2-4573 | |

1239722
[0075585H]

BEST IMAGE POSSIBLE