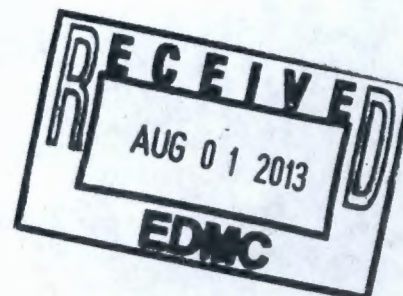


Low-Level Burial Grounds Trenches 31 & 34 Waste Analysis Plan

Prepared for the U.S. Department of Energy
Assistant Secretary for Environmental Management

Contractor for the U.S. Department of Energy
under Contract DE-AC06-08RL14788

 **CH2MHILL**
Plateau Remediation Company
P.O. Box 1600
Richland, Washington 99352



attached to
1221237

Low-Level Burial Grounds Trenches 31 & 34 Waste Analysis Plan

Document Type: PLAN Program/Project: DWF&RS

A. G. Miskho
CH2M HILL Plateau Remediation Company

Date Published
October 2012

Prepared for the U.S. Department of Energy
Assistant Secretary for Environmental Management

Contractor for the U.S. Department of Energy
under Contract DE-AC06-08RL14788

 **CH2MHILL**
Plateau Remediation Company
P.O. Box 1600
Richland, Washington 99352

APPROVED

By Janis D. Aardal at 11:40 am, Dec 10, 2012

Release Approval

Date

TRADEMARK DISCLAIMER

Reference herein to any specific commercial product, process, or service by tradename, trademark, manufacturer, or otherwise, does not necessarily constitute or imply its endorsement, recommendation, or favoring by the United States Government or any agency thereof or its contractors or subcontractors.

This report has been reproduced from the best available copy.

Printed in the United States of America

**LOW-LEVEL BURIAL GROUNDS TRENCHES 31 & 34
WASTE ANALYSIS PLAN**

This page intentionally left blank.

LOW-LEVEL BURIAL GROUNDS TRENCHES 31 & 34 WASTE ANALYSIS PLAN

CONTENTS

| | | |
|-------|--|----|
| 1. | UNIT DESCRIPTION | 1 |
| 1.1 | Description of Unit Processes and Activities..... | 1 |
| 1.1.1 | Waste Acceptance, Movement, Processing, and Management..... | 1 |
| 1.1.2 | Operating Conditions | 5 |
| 1.2 | Identification and Classification of Waste | 5 |
| 1.2.1 | Dangerous Waste Numbers, Quantities, and Design Capacity | 7 |
| 2. | CONFIRMATION PROCESS..... | 11 |
| 2.1 | Newly Generated Waste..... | 11 |
| 2.1.1 | Pre-Shipment Review | 11 |
| 2.1.2 | Verification | 16 |
| 2.1.3 | Waste Acceptance..... | 21 |
| 2.2 | Solid Waste Operations Complex (SWOC) TSD Unit Transfers | 21 |
| 2.2.1 | Waste Stream Approval Process..... | 21 |
| 2.2.2 | Waste Transfer Approval Process..... | 21 |
| 2.2.3 | Verification | 21 |
| 2.3 | Management of Waste Retrieval Project Waste within Solid Waste Operations Complex (SWOC) TSD Units | 21 |
| 2.4 | LLBG Trenches 31 & 34 and Associated Container Storage Units Generated Waste | 22 |
| 2.4.1 | Waste Stream Approval Process..... | 22 |
| 2.4.2 | Waste Transfer Approval Process..... | 22 |
| 2.4.3 | Verification | 22 |
| 2.5 | Discrepant Container Management..... | 22 |
| 2.6 | Sampling and Analysis Plans | 23 |
| 3. | SELECTING WASTE ANALYSIS PARAMETERS | 24 |
| 3.1 | Physical Screening Parameters | 25 |
| 3.2 | Chemical Screening Parameters..... | 26 |
| 3.3 | Analysis Parameters and Methods | 28 |
| 4. | SELECTING SAMPLING PROCESSES | 31 |
| 4.1 | Sampling Strategies..... | 31 |
| 4.2 | Sampling Methods | 31 |
| 4.3 | Selecting Sampling Equipment..... | 31 |
| 4.4 | Sample Preservation..... | 32 |
| 4.5 | Establishing Quality Assurance and Quality Control for Sampling | 32 |
| 5. | LABORATORY SELECTION AND QUALITY ASSURANCE/QUALITY CONTROL | 34 |
| 5.1 | Evaluation of Laboratories..... | 34 |
| 5.2 | Quality Assurance/Quality Control Objectives..... | 34 |
| 5.3 | Laboratory Quality Assurance/Quality Control | 35 |
| 5.4 | Data Assessment | 35 |
| 6. | SELECTING WASTE RE-EVALUATION FREQUENCIES..... | 37 |
| 7. | SPECIAL WASTE ANALYSIS PROCEDURAL REQUIREMENTS | 38 |

| | | |
|-----|---|----|
| 7.1 | Processes for Receiving Onsite Waste and Offsite Waste | 38 |
| 7.2 | Processes for Ignitable, Reactive, and Incompatible Waste..... | 38 |
| 7.3 | Provisions for Compliance with Federal and State Land Disposal Restriction Requirements | 38 |
| 7.4 | Sampling and Analytical Methods | 39 |
| 7.5 | Waste Treatment | 39 |
| 7.6 | Land Disposal Restriction Certification of Treatment | 40 |
| 8. | RECORDKEEPING | 41 |
| 9. | REFERENCES | 42 |

Tables and Figures

| | | |
|----------|--|----|
| Figure 1 | Waste Confirmation and Acceptance Process For Newly Generated Waste..... | 8 |
| Figure 2 | Waste Tracking..... | 9 |
| Figure 3 | Waste Transfers Between Solid Waste Operations Complex TSD Units | 10 |
| Figure 4 | Waste Acceptance Process | 13 |
| Table 1 | Chemicals Incompatible with the High-Density Polyethylene Liner..... | 6 |
| Table 2 | Parameters and Rationale for Physical and Chemical Screening..... | 24 |
| Table 3 | Analytical Parameters, Methods, and Rationale for Testing..... | 28 |
| Table 4 | LLBG Trench 31 & 34 Sampling Equipment..... | 32 |

This page intentionally left blank.

ACRONYMS

| | |
|----------------------------|---|
| ALARA | as low as reasonably achievable |
| AOAC | Association of Official Analytical Chemists |
| APHA | American Public Health Association |
| ASNT | American Society for Nondestructive Testing |
| ASTM | American Society for Testing and Materials |
| CAP | corrective action plan |
| CCW | constituent concentrations in waste |
| CCWE | constituent concentrations in waste extract |
| COLIWASA | composite liquid waste sampler |
| CFR | Code of Federal Regulations |
| CWC | Central Waste Complex |
| DOE-RL | U.S. Department of Energy, Richland Operations Office |
| DQO | data quality objectives |
| Ecology | Washington State Department of Ecology |
| EPA | U.S. Environmental Protection Agency |
| HNF | Hanford Nuclear Facility (document identifier) |
| LDR | land disposal restriction |
| LLBG | Low-Level Burial Grounds |
| MSDS | material safety data sheet |
| NDE | nondestructive examination |
| NIOSH | National Institute for Occupational Safety and Health |
| PES | performance evaluation system |
| pH | negative logarithm of the hydrogen-ion concentration |
| PPE | personal protective equipment |
| QA | quality assurance |
| QC | quality control |
| RCRA | <i>Resource Conservation and Recovery Act of 1976</i> |
| RCW | Revised Code of Washington |
| SAP | sampling and analysis plan |
| SWOC | Solid Waste Operations Complex |
| T Plant | T Plant Complex |
| TCLP | toxicity characteristic leaching procedure |
| TPA or Tri-Party Agreement | <i>Hanford Federal Facility Agreement and Consent Order</i> |
| TSD | treatment, storage, and/or disposal |
| UHC | underlying hazardous constituents |
| WAC | Washington Administrative Code |
| WAP | waste analysis plan |
| WRAP | Waste Receiving and Processing Facility |
| WRP | Waste Retrieval Project |

METRIC CONVERSION CHART

Into metric units

Out of metric units

| If you know | Multiply by | To get | If you know | Multiply by | To get |
|--------------------------------|--|---------------------------------|---------------------------------|---------------------------------------|------------------------|
| Length | | | Length | | |
| inches | 25.40 | millimeters | millimeters | 0.03937 | inches |
| inches | 2.54 | centimeters | centimeters | 0.393701 | inches |
| feet | 0.3048 | meters | Meters | 3.28084 | feet |
| yards | 0.9144 | meters | Meters | 1.0936 | yards |
| miles (statute) | 1.60934 | kilometers | kilometers | 0.62137 | miles (statute) |
| Area | | | Area | | |
| square inches | 6.4516 | square centimeters | square centimeters | 0.155 | square inches |
| square feet | 0.09290304 | square meters | square meters | 10.7639 | square feet |
| square yards | 0.8361274 | square meters | square meters | 1.19599 | square yards |
| square miles | 2.59 | square kilometers | square kilometers | 0.386102 | square miles |
| acres | 0.404687 | hectares | hectares | 2.47104 | acres |
| Mass (weight) | | | Mass (weight) | | |
| ounces (avoir) | 28.34952 | grams | Grams | 0.035274 | ounces (avoir) |
| pounds | 0.45359237 | kilograms | kilograms | 2.204623 | pounds (avoir) |
| tons (short) | 0.9071847 | tons (metric) | tons (metric) | 1.1023 | tons (short) |
| Volume | | | Volume | | |
| ounces (U.S., liquid) | 29.57353 | milliliters | milliliters | 0.033814 | ounces (U.S., liquid) |
| quarts (U.S., liquid) | 0.9463529 | liters | Liters | 1.0567 | quarts (U.S., liquid) |
| gallons (U.S., liquid) | 3.7854 | liters | Liters | 0.26417 | gallons (U.S., liquid) |
| cubic feet | 0.02831685 | cubic meters | cubic meters | 35.3147 | cubic feet |
| cubic yards | 0.7645549 | cubic meters | cubic meters | 1.308 | cubic yards |
| Temperature | | | Temperature | | |
| Fahrenheit | subtract 32 then multiply by 5/9ths | Celsius | Celsius | multiply by 9/5ths, then add 32 | Fahrenheit |
| Energy | | | Energy | | |
| kilowatt hour | 3,412 | British thermal unit | British thermal unit | 0.000293 | kilowatt hour |
| kilowatt | 0.94782 | British thermal unit per second | British thermal unit per second | 1.055 | kilowatt |
| Force/Pressure | | | Force/Pressure | | |
| pounds (force) per square inch | 6.894757 | Kilopascals | kilopascals | 0.14504 | pounds per square inch |

06/2001

Source: *Engineering Unit Conversions*, M. R. Lindeburg, PE., Third Ed., 1990, Professional Publications, Inc., Belmont, California.

DEFINITIONS

| Term | Definition |
|---------------------------------------|---|
| Analysis | Obtaining and reviewing information provided by the waste generator and/or provided by other means to confirm the information provided concerning a waste stream. |
| Compatible | As applied to suitability of containers, tanks or sampling equipment, <i>compatible</i> means the waste will not react with or otherwise damage the container, tank, or sampling equipment so that the ability of the equipment to contain the waste is not impaired. For determination of compatibility for storage, refer to definition of <i>incompatible waste</i> . |
| Inspection | Viewing of the contents of the container, container markings and labeling, number of containers, and/or the container itself as a means of confirming the identity of the waste. |
| Knowledge | Sufficient information about a waste to reliably substitute for direct testing of the waste. To be sufficient and reliable, the <i>Knowledge</i> used must provide information necessary to manage the waste in accordance with the requirements of this chapter. [WAC 173-303-040] Note: <i>Knowledge</i> may be used by itself or in combination with testing to designate as waste pursuant to WAC 173-303-070(3)(c), or to obtain a detailed chemical, physical, and/or biological analysis of a waste as required in WAC 173-303-300(2). |
| Profile | A <i>detailed physical, chemical, and/or biological analysis of a dangerous waste</i> provided by the waste generator in order to allow the Solid Waste Operation Complex (SWOC) Treatment, Storage, and/or Disposal (TSD) Units (CWC, WRAP, T Plant, and LLBG Trenches 31 & 34) staff to perform waste analysis. |
| Solid Waste Operations Complex (SWOC) | A combination of treatment, storage, and disposal operating unit groups consisting of the CWC, Waste Receiving and Processing Facility (WRAP), T Plant, and Low Level Burial Grounds (LLBG) Trenches 31 & 34. |
| Testing | Performance of a procedure that yields a quantitative or qualitative evaluation of the type and/or quantity of materials present. Sometimes referred to as <i>analysis</i> or <i>laboratory analysis</i> , but for purposes of this procedure, the term <i>testing</i> is used to distinguish it from waste analysis (refer to definition of <i>analysis</i> above). |
| Verification | Determination that the waste in question is that waste described on the approved profile. Verification includes container receipt inspection, physical screening, and chemical screening of waste. |
| Waste Stream | Wastes that are physically or chemically different from each other; wastes that are generated from different types of processes; or wastes that are of the same type, but generated at different points in the process or at different process locations. |

WASTE ANALYSIS PLAN

1. UNIT DESCRIPTION

Low Level Burial Ground (LLBG) Trenches 31 & 34 and the associated container storage units are located within 218-W-5 Burial Ground in the 200 West Area. LLBG Trenches 31 & 34 and the associated container storage units provide storage and disposal for Land Disposal Restriction (LDR) compliant mixed waste and treatment of certain waste in LLBG Trenches 31 & 34.

This Waste Analysis Plan (WAP) describes the waste acceptance processes that will be undertaken for treated and LDR compliant waste accepted for receipt, storage, and disposal at the LLBG Trenches 31 & 34. All waste disposed in the LLBG Trenches 31 & 34 must meet the requirements of the Washington State Department of Ecology Dangerous Waste Regulations, Washington Administrative Code (WAC) 173-303-300, General Waste Analysis and LDR requirements. The LLBG Trenches 31 & 34 provide storage for waste awaiting final disposal.

1.1 Description of Unit Processes and Activities

The LLBG Trenches 31 & 34 is located in the 200 West Area of the Hanford Site. LLBG Trenches 31 & 34 is a land based unit within the 218-W-5 Burial Ground. The LLBG Trenches 31 & 34 and the two associated waste storage pads provide storage and disposal for treated and LDR compliant dangerous and/or mixed waste.

LLBG Trenches 31 & 34 and the associated waste storage pads waste management capabilities including:

- Receiving.
- Storing of LDR compliant waste awaiting final disposal or non-LDR compliant waste where treatment in the trench will be performed.
- Visual inspection.

These waste processes include:

- Assessment and evaluation of the waste stream information. This process ensures conformance with the LLBG Trenches 31 & 34 and associated container storage units waste acceptance requirements prior to acceptance.
- Receipt and acceptance of dangerous and/or mixed waste.
- Completion and submittal of a waste stream data package.
- The LLBG Trenches 31 & 34 generation of new dangerous and/or mixed waste during processing.
- LLBG Trenches 31 & 34 management of the accepted waste for treatment (macroencapsulation) and/or disposal.

1.1.1 Waste Acceptance, Movement, Processing, and Management

The LLBG Trenches 31 & 34 waste tracking processes ensure that the waste received at LLBG Trenches 31 & 34 matches the shipping manifest or transfer documents, and that the waste will be tracked through LLBG Trenches 31 & 34. The LLBG Trenches 31 & 34 maintains all the waste tracking information.

The LLBG Trenches 31 & 34 operating organization tracks the waste through the following processes: storage, treatment; transfers; and/or final disposal. The waste tracking process provides a mechanism for tracking waste using a unique container identification number (Figure 4). The unique number is a barcode (or equivalent) that will be recorded in an electronic data tracking system. This mechanism encompasses waste acceptance, movement, processing, and management of waste. This electronic

container tracking system identification number links the hard copy or electronic record to the container. These records will be maintained in accordance with Section 8, Recordkeeping. The container identification number records contain information on the location, quantity, and physical and chemical characteristics of the waste.

The following Sections, and Figures 1, 2, and 3 describe the process for waste acceptance and required documentation (container data and waste profile).

1.1.1.1 Narrative Process Descriptions

Treatment Standards for dangerous wastes must be met before disposal. Waste streams received for final disposal in LLBG Trenches 31 & 34 may be stored on the associated container storage units. For waste that meets the applicable LDR requirements, the LLBG Trenches 31 & 34 operating organization maintains all the information (Section 8) to demonstrate how these requirements have been met.

The Hanford Facility is required to test certain mixed wastes when treatment standards are expressed as concentrations to ensure that the waste or treatment residues are in compliance with applicable LDR requirements (Section 2.1.3.2 and 7.3). Such testing will be performed according to the frequency specified in this WAP, as stated in 40 CFR 268.7(b), incorporated in reference by WAC 173-303-140.

1.1.1.2 Waste Acceptance Process

Waste acceptance processes for the LLBG Trenches 31 & 34 and the associated container storage units exist for newly generated waste (2.1), SWOC transfers (2.2), WRP waste (2.3), and LLBG Trenches 31 & 34 Generated waste (2.4). These processes typically include waste stream approval, waste shipment/transfer approval, and verification. Refer to the respective sections in 2 for how these processes apply to the difference categories of waste.

1.1.1.2.1 Types of Knowledge

When collecting documentation on a waste stream or container, the LLBG Trenches 31 & 34 must determine if the information provided by the generator meets the definition of *Knowledge* in WAC 173-303-040. Knowledge requirements will be met by sampling and analysis, and/or historical data. Historical data consists of detailed information from existing waste analysis data or information on processes similar to those that generated the waste, including the following:

- Mass balance from a controlled process that has a specified input for a specified output.
- Material safety data sheets (MSDSs) on unused chemical products.
- Test data from a surrogate sample.
- Analytical data on the waste.
- Interview information.
- Logbooks.
- Procurement records.
- Processes and/or methods.
- Process flow charts.
- Inventory sheets.
- Vendor information.
- Mass balance from an uncontrolled process (e.g., spill cleanup).
- Mass balance from a process with variable controlled inputs and outputs (e.g., washing/cleaning methods).

All information meeting the definition of Knowledge will be applied to designate waste, quantify constituents, and characterize the waste for its safe management to demonstrate compliance with LLBG Trenches 31 & 34 acceptance requirements.

1.1.1.2.2 Description of Performance Evaluation System Committee (PES)

The Performance Evaluation System Committee (PES) acts as an agent of LLBG Trenches 31 & 34 and determines the initial physical screening frequency of each Hanford on-site generator's waste stream. PES provides a periodic status report for an individual generator's performance as identified in Section 2 for applicable waste received at LLBG Trenches 31 & 34. In addition, PES provides a mechanism for determining corrective actions, resolving waste acceptance issues, and physical screening frequency adjustments when a conformance issue is discovered.

1.1.1.2.3 Initial Physical Screening Frequency Determination

The initial physical screening frequency will be determined based on the following process.

- Personnel responsible for waste receipt at LLBG Trenches 31 & 34 review the generator waste profile information to determine the relative potential for incorrect designation or inappropriate segregation based on all relevant information, including any previous experience with the generator. Based on this review, any concerns will be identified associated with the following criteria:
 - Documented waste management program;
 - Waste stream characterization information;
 - Potential for inappropriate segregation.
- Based on the identification of concerns during the review, an initial physical screening frequency will be established for the new generator's waste stream based on the following criteria:
 - Initial physical screening frequency of, at a minimum, 20 percent: No concerns identified (e.g., cleanup of contaminated soil where the soil has been well characterized and no other waste generation processes are occurring at that location).
 - Initial physical screening frequency of, at a minimum, 50 percent: Concern(s) identified in one criterion.
 - Initial physical screening frequency of 100 percent: Concerns identified in two or more criteria.

1.1.1.2.4 Performance Evaluation

A performance evaluation is used to trend a generator's waste acceptance performance and is used to adjust the generator's overall physical screening frequency. This evaluation, identified as an integral part of the quality assurance (QA) program, objectively considers the conformance issues documented during the Pre-shipment Review and Verification functions. The PES maintains processes that: (1) perform evaluations based on conformance issues identified, (2) evaluate unsatisfactory performance for corrective actions, and (3) adjust physical screening rates accordingly.

The performance evaluation will be conducted and subsequently accepted by the PES, and the documentation will be maintained in accordance with Section 8, Recordkeeping. Performance evaluation frequency will be based on the generator's historical performance and the waste stream involved.

1.1.1.2.5 Conformance Issue Resolution

Conformance issues may result in a waste container not meeting the LLBG Trenches 31 & 34 waste acceptance requirements. A conformance issue is any discrepancy identified during the confirmation process with waste package documentation, a waste package, or a shipment. Discrepancies can be identified during pre-shipment reviews of waste streams during the verification process. When a possible conformance issue is identified, the following actions will be taken to resolve the discrepancy issue:

- The PES compiles all information concerning the possible conformance issue(s).
- The PES notifies and requests that the generator supply additional knowledge that may assist in the resolution of the concern(s). When the generator supplies information that resolves the concern(s) identified, no further action will be required.
- Once PES identifies a conformance issue during verification, the LLBG Trenches 31 & 34 operating organization personnel and the generator discuss the conformance issue and identify the appropriate corrective action to resolve the container issue. The corrective actions may include returning the container to the generator or transferring the container to another TSD unit/off-site TSD facility to resolve the conformance issue. When the conformance issue(s) results in a waste stream failure, the physical screening frequency for all waste streams that have the potential to exhibit a similar conformance issue from the generator are adjusted to 100 percent until the issue(s) are adequately addressed.
- The LLBG Trenches 31 & 34 operating organization requests the generator to provide a corrective action plan (CAP) that clearly states the reason for the failure and describes the actions required to prevent recurrence. The generator may request a reduction in verification of unaffected waste streams. This request must be accompanied by a justification that identifies why these waste stream(s) will not exhibit the same conformance issue.
- The LLBG Trenches 31 & 34 operating organization reviews the CAP and waste stream justification for adequacy. When the CAP is considered inadequate by LLBG Trenches 31 & 34, the generator screening rate cannot be dropped down to the baseline frequency until an approved CAP is in place. When the waste stream justification is adequate, the LLBG Trenches 31 & 34 may provide an alternative frequency as denoted in Section 1.1.1.2.6.

1.1.1.2.6 Process for Reducing the Physical Screening Frequency

Physical screening rate frequencies and changes to those frequencies may be applied to a specific waste stream, to a specific contractor, or to a specific offsite or onsite generator based on the circumstances surrounding the conformance issue. After LLBG Trenches 31 & 34 operating organization establishes or increases the initial physical screening frequency, it may be reduced in accordance with the following process.

LLBG Trenches 31 & 34 operating organization reduces physical screening in three steps. Reduction for all steps will be based on the generator's ability to demonstrate that five containers from the waste stream in question pass verification in one physical screening event. In addition, reduction to the minimum frequency requires that the LLBG Trenches 31 & 34 operating organization documents an acceptable evaluation of the corrective action plan. At no time will the physical screening frequency be reduced below 5 percent (minimum allowable) for waste generated onsite for waste generated onsite or below 10 percent for offsite generators.

- Step 1) Reduce frequency by up to 66 percent after five containers from the waste stream in question pass verification.
- Step 2) Reduce frequency established in Step 1 by up to 50 percent after five containers from the waste stream in question pass verification.
- Step 3) Reduce frequency established in Step 2, to the baseline frequency after five containers from the waste stream in question pass verification. The LLBG Trenches 31 & 34 operating organization documents the acceptable evaluation of the corrective action plan.

The physical screening rate reduction will be established during periodic PES evaluations, and the documentation will be maintained according to Section 8, Recordkeeping. The percentage of the reduction will be based on the evaluation of the relative severity of the original conformance issue, the status of the corrective action plan, any interim actions taken by the generator, and the generator's historical performance for this waste stream before this reduction.

1.1.2 Operating Conditions

The LLBG Trenches 31 & 34 operating organization conducts waste management operations in accordance with the design and engineering requirements of waste management structures and equipment, and with all equipment manufacture specifications and operating processes. Before any storage, treatment, and/or disposal of waste, the LLBG Trenches 31 & 34 operating organization will have processes in place for safe management of the waste. These processes consider actual or potential risks posed by the waste and the storage, treatment, and/or disposal equipment. LLBG Trenches 31 & 34 will conduct all waste treatment and/or storage according to these processes and comply with requirements for labeling, container management, and inspection requirements. Management of ignitable, reactive, or incompatible waste within CWC will be accomplished in accordance with Section 7.2.

1.2 Identification and Classification of Waste

LLBG Trenches 31 & 34 waste management operations will be conducted in accordance with the requirements of the WAP. Before a waste is accepted into LLBG Trenches 31 & 34, its properties will be evaluated to determine if the waste can be safely managed within LLBG Trenches 31 & 34. Waste is accepted for disposal and/or storage in LLBG Trenches 31 & 34 except for the following waste types:

- Waste is not accepted for disposal when the waste contains free standing liquid unless all free standing liquid:
 - Has been removed by decanting or other methods
 - Has been mixed with sorbent or stabilized (solidified) so that free standing liquid is no longer observed
 - Has been otherwise eliminated
 - Container is very small, such as an ampoule
 - Container is a labpack and is disposed in accordance with WAC 173-303-161
 - Container is designed to hold free liquids for use other than storage, such as a battery or capacitor.

There could be cases in which small amounts of residual liquids are present in mixed waste containers because condensate has formed following packaging or free liquids remain in debris items (e.g., pumps, tubing) even after draining. When it is not practical to remove this residual liquid or impossible to sample to determine if liquids are present, the liquid must be eliminated to the maximum extent practical by draining and placing a quantity of sorbent sufficient to sorb all residual liquids in the bottom of the container or dispersed among the waste.

Free liquid is determined by SW-846, *Test Methods for Evaluating Solid Waste: Physical/Chemical Method*, Method 9095 (Paint Filter Liquids Test) [WAC 173-303-140(4)(b)] only for waste that has the potential for free liquid formation and cannot be demonstrated through other means.

- Gaseous waste is not accepted for disposal if the waste is packaged at a pressure in excess of 1.5 atmospheres at 20°C.
- Pyrophoric waste is not accepted for disposal. Waste containing less than 1 weight percent pyrophoric material partially or completely dispersed in each package is not considered pyrophoric for the purposes of this requirement.
- Solid acid waste is not accepted for disposal [WAC 173-303-140(4)(c)].
- Untreated extremely hazardous waste is not accepted for disposal. Extremely hazardous waste that has been treated could be disposed and/or stored in accordance with Revised Code of Washington (RCW) 70.105.050(2), "Hazardous Waste Management".

- Untreated organic/carbonaceous waste is not accepted for disposal [WAC 173-303-140(4)(d)] except as allowed by WAC 173-303-140(4)(d)(iii).
- Waste not meeting the applicable treatment standards is not accepted for disposal [40 CFR 268 and WAC 173-303-140(4)] unless it will be treated to meet LDR in LLBG Trenches 31 & 34.
- Incompatible mixed waste and mixed waste incompatible with the liner system is not accepted in LLBG Trenches 31 & 34 disposal unit. Table 1 provides a list of chemicals that have been shown to be incompatible with the liner material in concentrated form. In general, mixed waste that meets federal and state treatment standards is compatible with the liner system. Waste streams are evaluated during pre-transfer/pre-shipment review to ensure that the waste streams do not contain constituents in sufficient concentrations to be incompatible with the liner system in concentration sufficient to degrade the liner.

Table 1 Chemicals Incompatible with the High-Density Polyethylene Liner (in concentrated form)

| Chemical | CAS Number |
|-------------------------------|-------------------|
| Amyl chloride | 543-59-9 |
| Aqua regia | 8007-56-5 |
| Bromic acid | 15541-45-4 |
| Bromobenzene | 108-86-1 |
| Bromoform | 75-25-2 |
| Calcium bisulfite | 13780-03-5 |
| Calcium sulfide | 20548-54-3 |
| Diethyl benzene | 25340-17-4 |
| Diethyl ether | 60-29-7 |
| Bromine | 7726-95-6 |
| Chlorine | 7782-50-5 |
| Fluorine | 7782-41-4 |
| Ethyl chloride | 75-00-3 |
| Ethylene trichloride | 79-01-6 |
| Nitrobenzene | 98-95-3 |
| Perchlorobenzene | 118-74-1 |
| Propylene dichloride | 78-87-5 |
| Sulfur trioxide | 7446-11-9 |
| Sulfuric acid (fuming) | 8014-95-7 |
| Thionyl chloride | 7719-09-7 |
| Vinylidene chloride | 75-35-4 |

CAS = Chemical Abstracts Service

Refer to Section 7.2 for precautions taken when ignitable or reactive waste is stored/treated, and the prevention of accepting incompatible waste.

LLBG Trenches 31 & 34 manages waste that has been treated to meet LDR and waste that will be treated to meet LDR requirements as described in Section 7.5. This waste material consists of items such as but not limited to personal protective equipment (PPE), rags, and spent equipment contaminated with dangerous cleaning agents, lubricants, paints, or other dangerous materials.

Biological waste could consist of animal remains that were used for experiments.

1.2.1 Dangerous Waste Numbers, Quantities, and Design Capacity

The LLBG Trenches 31 & 34 Part A identifies dangerous waste numbers, quantities, and design capacity.

Waste is designated pursuant to WAC 173-303 using manufacturer's product information, MSDS, laboratory analysis, and reference material such as *Registry of Toxic Effects of Chemical Substances* (NIOSH). Waste designated for the DW numbers enumerated in the table below (See the LLBG Part A Permit Application form) can be accepted for storage in LLBG Trenches 31 & 34, subject to the additional requirements in this WAP.

Designation for waste types accepted and stored at LLBG Trenches 31 & 34 include:

| Number | References |
|---|-------------------------|
| U and P numbers | WAC 173-303-9903-9904 |
| F numbers (limited numbers refer to Part A) | WAC 173-303-9904 |
| WPCB | WAC 173-303-9904 |
| D001 | WAC 173-303-090(5) |
| D002 | WAC 173-303-090(6) |
| D003 | WAC 173-303-090(7) |
| D004 through D043 | WAC 173-303-090(8) |
| WT01 and WT02 | WAC 173-303-100 and 104 |
| WP01, WP02, and WP03 | WAC 173-303-100 and 104 |
| WSC2 | WAC 173-303-090(6)/104 |

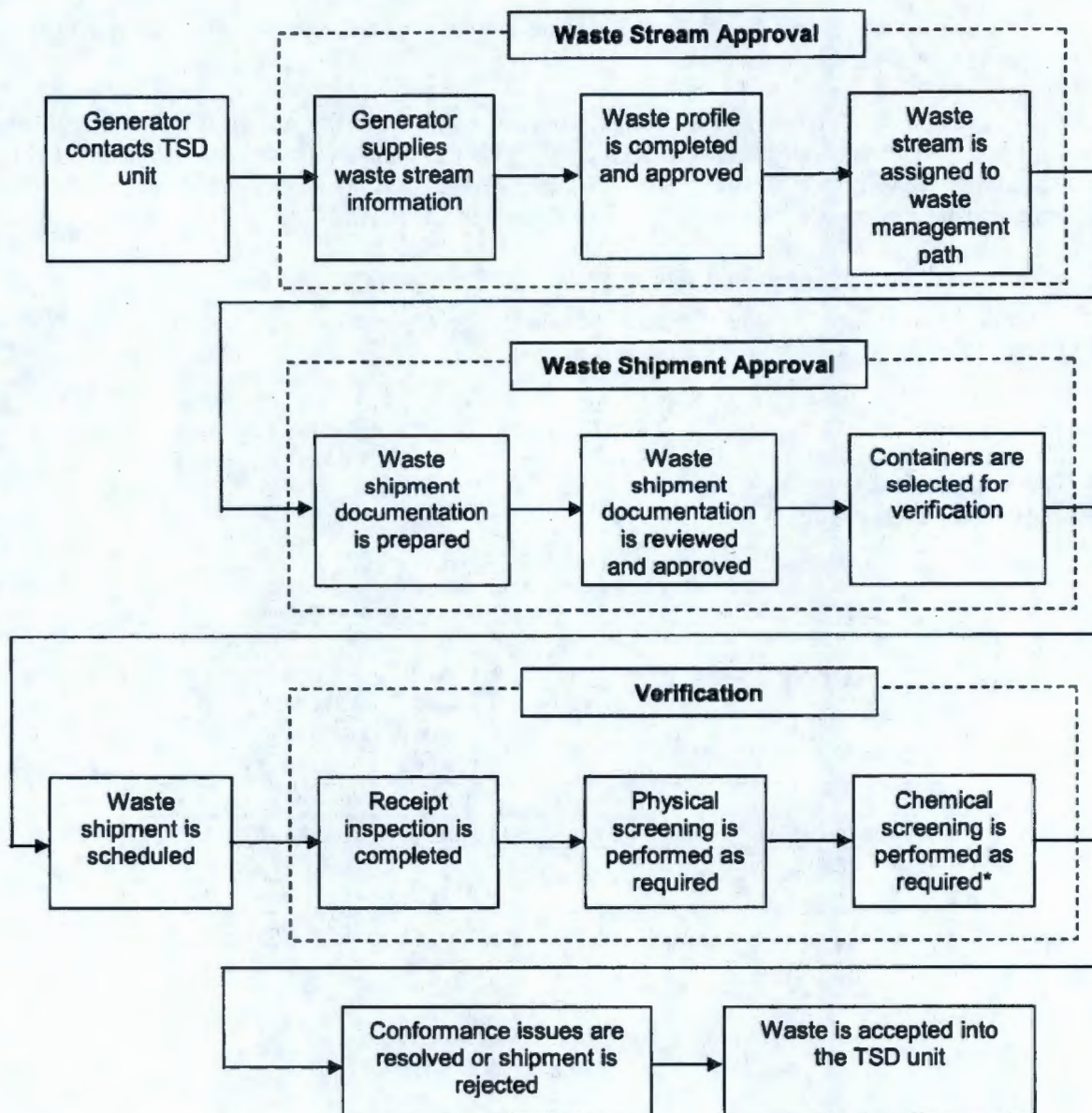


Figure 1 Waste Confirmation and Acceptance Process For Newly Generated Waste

* Trained LLBG Trenches 31 & 34 personnel may conduct verification at the Hanford onsite generator prior to shipment.

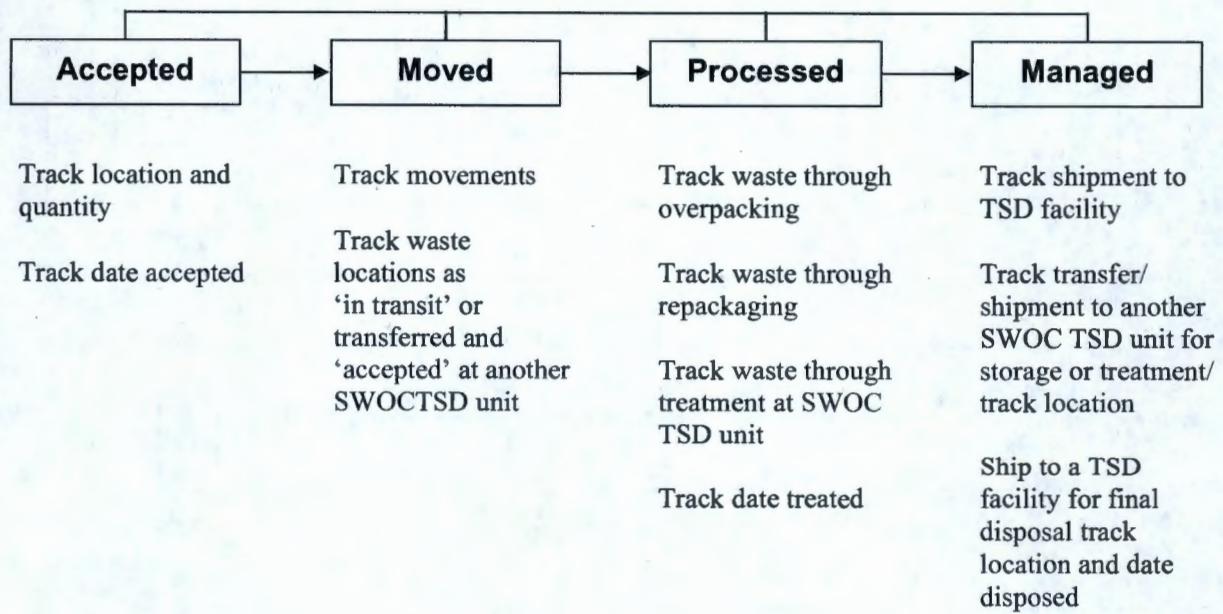


Figure 2 Waste Tracking

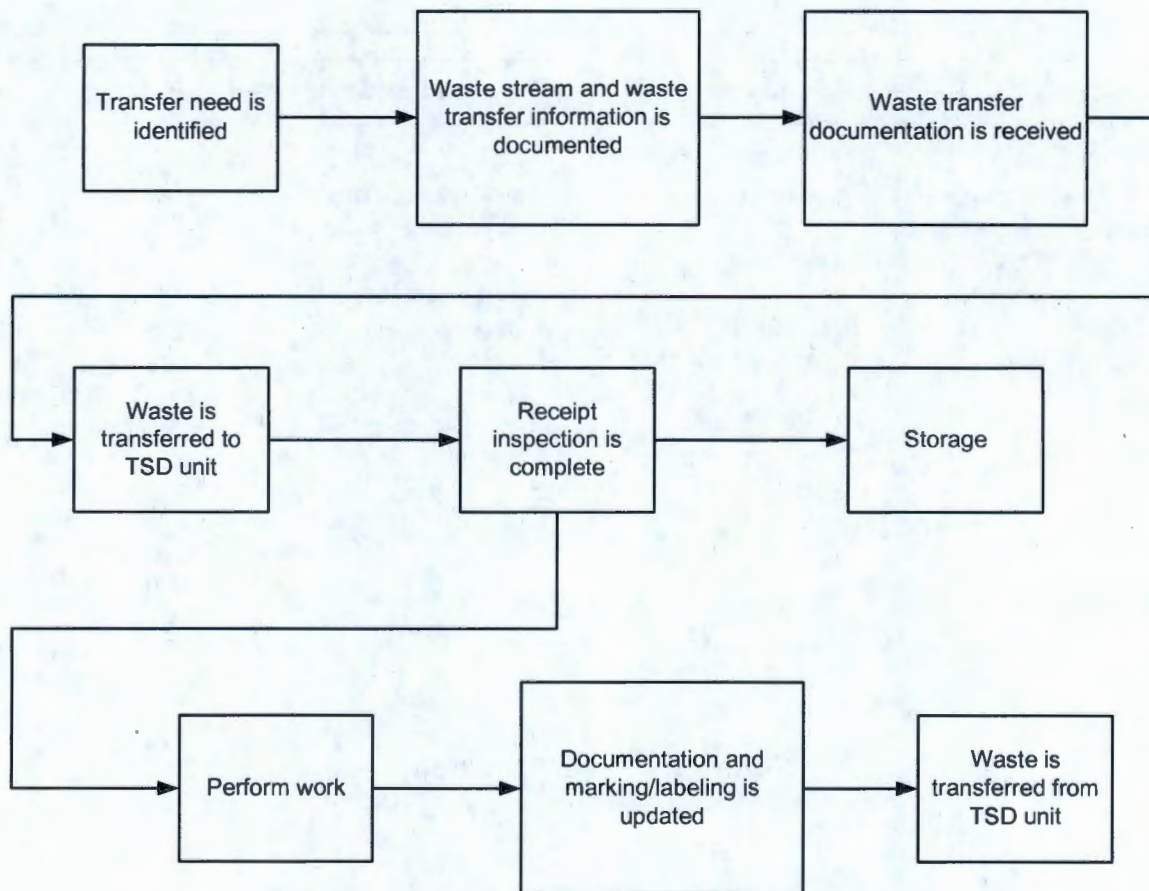


Figure 3 Waste Transfers Between Solid Waste Operations Complex TSD Units

2. CONFIRMATION PROCESS

The confirmation process used to meet WAC 173-303-300 requirements includes completing pre-shipment reviews and verification steps as described in this section and indicated on Figure 2. The four confirmation processes are identified as follows:

- Newly generated waste for non-LLBG Trenches 31 & 34 onsite generating locations and offsite generators (Section 2.1)
- Waste transfers of previously accepted waste between SWOC TSD Units (Section 2.2)
- Waste Retrieval Project (WRP) waste transfers (Section 2.3) and
- LLBG Trenches 31 & 34 generated waste (Section 2.4)

2.1 Newly Generated Waste

2.1.1 Pre-Shipment Review

Pre-shipment review takes place before waste can be scheduled for transfer or shipment to LLBG Trenches 31 & 34. The review focuses on whether the waste stream is defined accurately, meets the LLBG Trenches 31 & 34 waste acceptance requirements, and the LDR treatment standards. Only waste determined to be acceptable for storage, treatment, and/or disposal is scheduled. This determination will be based on the information provided by the generator. The pre-shipment review consists of the waste stream approval and waste shipment approval process. The following sections discuss the pre-shipment review process. The information obtained from the generator during the pre-shipment review will, at a minimum, include all information necessary to safely store, treat, and/or dispose of the waste. The pre-shipment review will ensure that the waste has been characterized for purposes of evaluation against the LLBG Trenches 31 & 34 waste acceptance requirements.

2.1.1.1 Waste Stream Approval Process

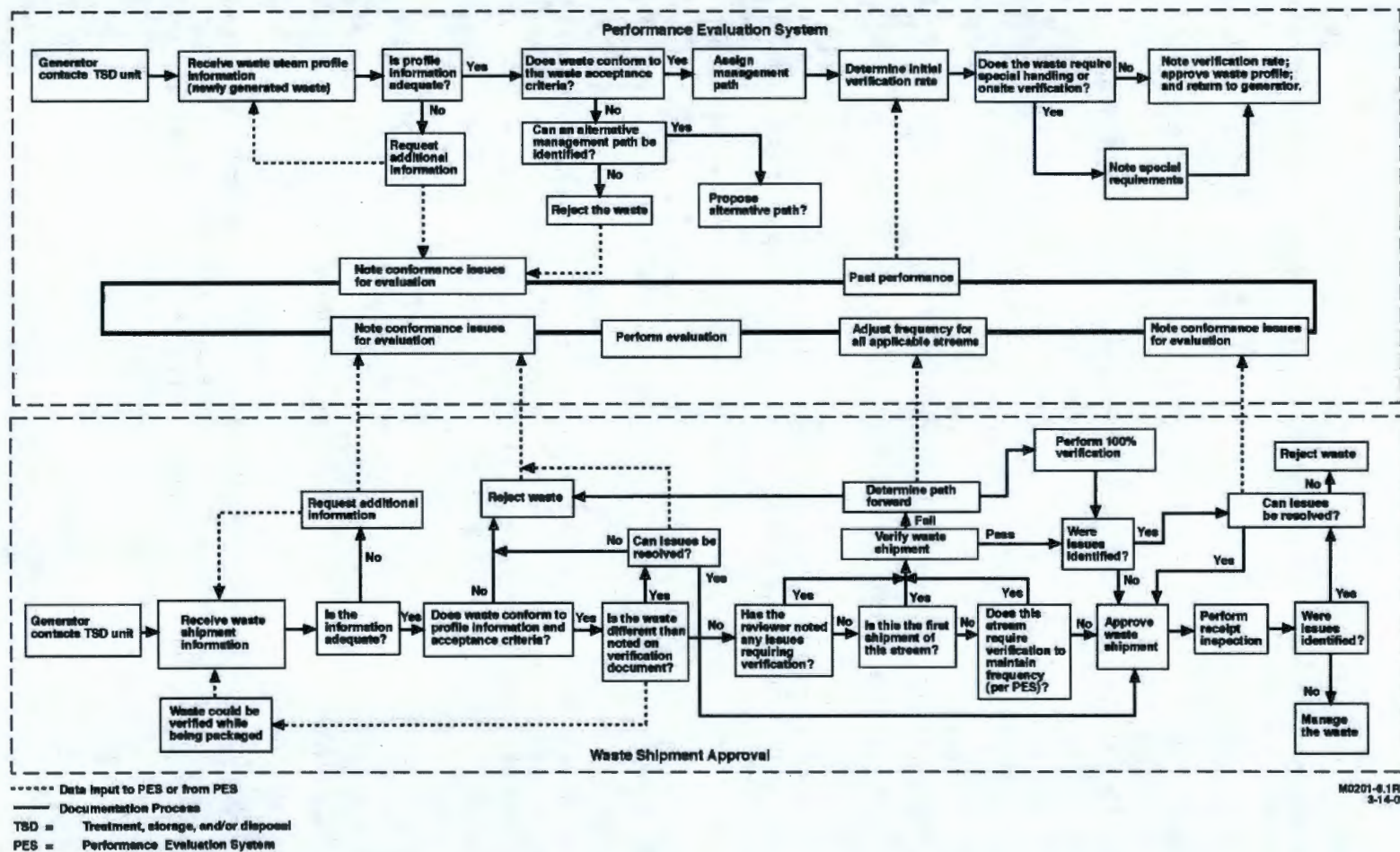
The waste stream approval process consists of reviewing waste stream information supplied on a waste stream profile and/or other approved processes and analysis authorized by this WAP. At a minimum, the waste stream profile requires the following information:

- Generator information (e.g., name, address, point-of-contact, telephone number).
- Waste stream name.
- Waste generating process description.
- Chemical characterization information (e.g., characterization method(s), chemicals present, concentration ranges).
- Designation information.
- For mixed and/or dangerous waste, applicable LDR information including identification of constituents subject to treatment for F001-F005 and F039, and underlying hazardous constituents (UHCs) that were treated to meet LDR compliance.
- Waste type information (e.g., physical state, absorbents used, inert materials, stabilizing agents used).
- Packaging information (e.g., container type, maximum weight, size).
- Attachments may consist of container drawings, process flow information, analytical data, etc.,

This information will be reviewed against the LLBG Trenches 31 & 34 waste acceptance requirements to ensure that the waste is acceptable for receipt. When conformance issues are found during this review, additional information is requested. The request may include a requirement for providing analytical data or additional data derived from sample analysis. If the waste cannot be received, the LLBG Trenches 31 & 34 will pursue acceptance of the waste at an alternative TSD unit or request the generator to pursue acceptance at an offsite TSD facility or another approved facility.

On determination that the waste is acceptable for receipt at the LLBG Trenches 31 & 34, the LLBG Trenches 31 & 34 assign a waste management path to the waste for final disposal and establishes a waste verification frequency based on the PES requirements.

Figure 4 Waste Acceptance Process



2.1.1.2 Waste Shipment Approval Process

For each waste transfer or shipment that is a candidate for storage and/or treatment, the generator must provide the following information:

- Container identification number.
- Profile number (except for waste transfers of previously accepted waste).
- Waste description.
- Generator information (e.g., name, address, point-of-contact, telephone number).
- Container information (e.g., type, size, weight).
- Dangerous waste numbers.
- Designation as extremely hazardous waste or dangerous waste.
- Waste composition.
- Packaging materials and quantities.

The pertinent information will be entered into the Hanford Facility Operating Record, LLBG Trenches 31 & 34 unit-specific portion.

When potential conformance issues exist in the information provided, (e.g., waste characteristics do not match the waste profile information, conform to LLBG Trenches 31 & 34 waste acceptance requirements, or additional constituents are expected to be present that do not appear on the documentation), the LLBG Trenches 31 & 34 operating organization may contact the generator (if available) for resolution.

For each container, a technical review will be performed. Physical screening determination and chemical screening determination are defined in Sections 2.1.2.3 and 2.1.2.4. Technical review is as follows:

Technical review

The individual container data will be compared to the waste profile to ensure that the waste to be shipped to the LLBG Trenches 31 & 34 is as described by the waste profile. Based on the waste identification information provided, the waste designation will be reviewed to ensure compliance with waste designations per WAC 173-303-070 through -100, as well as evaluating whether the waste meets the LLBG Trenches 31 & 34 waste acceptance requirements.

When the transfer or shipment information is found to be acceptable, the LLBG Trenches 31 & 34 will determine when any of the waste containers will be physically and/or chemically screened. The LLBG Trenches 31 & 34 operating organization will document the determination of shipment or transfer of waste to meet the requirements of Section 8, Recordkeeping of this WAP.

2.1.1.3 Knowledge Requirements

The LLBG Trenches 31 & 34 shall ensure that all information used to make waste management decisions will be based on the requirements found in the following sections. Information determined to be Knowledge must meet the definition of *Knowledge* cited in WAC 173-303-040. Information from sampling and analysis must meet the data quality requirements for the associated waste acceptance requirement or parameter.

2.1.1.3.1 General Knowledge Requirements

General Knowledge requires (1) waste Knowledge requirements, (2) LDR waste Knowledge requirements, and/or (3) waste Knowledge exceptions.

- (1) **General Waste Knowledge Requirements for Designation and Waste Management.** At a minimum, the generator must supply enough information for the waste to be stored, treated, and/or disposed at the LLBG Trenches 31 & 34. The minimum level of knowledge consists of designation

data where the constituents or Knowledge of the waste's generating source (in the case of wastes potentially from listed sources) causing a dangerous waste number to be assigned are quantified, and that data addresses any LLBG Trenches 31 & 34 operational parameters necessary for proper management of the waste.

When historical data indicates that constituents are present which might cause the waste to be regulated testing can be performed to ensure that the constituents do not appear in the waste above applicable regulatory levels. If the constituents are included in an input to a process and historical data supports that the constituents are not expected to be in the waste, then sampling will not be necessary. This requirement may be met through chemical screening. This testing will be required only for initial characterization of the waste stream.

When the available information does not qualify as Knowledge or is not sufficient to characterize a waste for management, the sampling and testing methods outlined in WAC 173-303-110 will be used to determine whether a waste designates as ignitable, corrosive, reactive, and/or toxic, and the sampling and testing methods will be used as applicable to determine whether the waste contains free liquids. If the testing is performed to complete characterization after acceptance of the waste by T Plant, then this WAP governs the sampling and testing requirements.

- (2) **Waste Knowledge Requirements for LDR Compliance.** The Handord Facility Operating Record, LLBG Trenches 31 & 34 unit-specific portion contain all information required to document that the appropriate treatment standards have been met or the treatment required to meet the LDR treatment standards has been completed, unless otherwise specified in this section of this WAP.

For wastes with a concentration-based LDR treatment standard, testing of a representative sample is required to demonstrate compliance with a concentration-based treatment standard (refer to Section 4 (Selecting Sampling Processes)). Corroborative testing for the sample is accomplished in the following manner:

- Generators use on-site laboratories or other laboratories to obtain data that is used as a basis to certify that the waste meets concentration-based LDR treatment standards. For waste that must meet method based LDR treatment standards, information must be supplied on the treatment methods necessary to meet LDR requirements and comply with WAC 173-303-380(1)(j),-(k),-(n), and -(o).
 - LLBG Trenches 31 & 34 will use these analytical data to meet applicable requirements found in WAC 173-303-140 (4).
- (3) **Waste Knowledge Exceptions.** The generator will provide the information necessary to further disposition the waste (e.g., repackage; designate; segregate; sample; and analyze) when general knowledge requirements are not met. However, the LLBG Trenches 31 & 34 operating organization will ensure sufficient information is available regarding D001, D002, D003, and incompatibility, and that operation safeguards are in place to safely manage waste. When sufficient information is not available to meet D001, D002, D003, and incompatibility knowledge requirements, the waste can be accepted and will enter the discrepant container management process described in Section 2.5 in order to obtain the necessary information.

2.1.1.3.2 Methodology to Ensure Compliance with Land Disposal Restrictions Requirements for Mixed and Dangerous Waste

The generators are subject to LDR requirements and are required to submit all information notifications and certifications described in WAC 173-303-380(1), (j), (k), (l), (m), (n), and (o). Mixed waste not meeting the treatment standards cannot be disposed at this TSD unit.

The following are general requirements for certification or information notification:

- The waste will be subject to LDR treatment standards and the generator has treated the waste. The generator supplies the appropriate LDR certification information [40 CFR 268, incorporated by reference into WAC 173-303-140].
- The waste will be subject to LDR treatment standards and the generator has determined that the waste meets the LDR for disposal. The generator develops the certification based on process knowledge and/or analytical data and supplies the appropriate LDR certification information necessary to demonstrate compliance with the LDR treatment standards of WAC 173-303-140. State-only LDRs do not require this type of certification.
- The waste is subject to LDR and requires further treatment to meet applicable treatment standard.
 - The generator will supply additional information concerning the waste and details any treatment necessary to meet applicable treatment standards.
 - If waste is treated to meet federal LDRs at the LLBG Trenches 31 & 34, the LLBG Trenches 31 & 34 prepares information necessary to meet WAC 173-303-380(1)(k) (Section 7.5).

A representative sample of the waste must be submitted for testing to ensure that concentration-based LDR treatment standards are met. This sample may be taken by the LLBG Trenches 31 & 34 operating organization or the generator according to the requirements of this WAP and is required to comply with the applicable treatment standards described in 40 CFR 268.40 and 268.48 for UHCs.

2.1.2 Verification

Verification is an assessment performed by the LLBG Trenches 31 & 34 operating organization to substantiate that the waste stream received at LLBG Trenches 31 & 34 is the same as represented by the analysis supplied by the generator for the pre-shipment review. Verification will be performed on waste received by the LLBG Trenches 31 & 34 operating organization. Verification includes container receipt inspection (Section 2.1.2.1). In addition, select containers may be subject to physical screening and chemical screening (Section 2.1.2.2). Waste will not be accepted by LLBG Trenches 31 & 34 for storage, treatment, and/or disposal before the required elements of verification have been completed. Documentation reviewed as part of verification activities will include the shipping manifest or onsite shipment document, container inventory documentation, a container listing report, visual verification records, screening analyses, and the waste profile.

Qualified personnel conduct all waste verification activities: container receipt inspection, physical screening, and chemical screening. Qualified personnel will be trained as required PRC-STD-TQ-40227, Low Level Burial Grounds Dangerous Waste Training Plan.

All conformance issues identified during the verification process will be resolved in accordance with Section 1.1.1.2.5, Conformance Issue Resolution.

Containers previously used to hold waste that is not acute hazardous waste as defined by WAC 173-303-040 will be evaluated to determine if they are empty by using the following criteria: A container or inner liner is "empty" when all wastes in it have been taken out that can be removed using practices commonly employed to remove materials from that type of container or inner liner (e.g., pouring, pumping, aspirating, etc.) and, no more than one inch of waste remains at the bottom of the container or inner liner, or the volume of waste remaining in the container or inner liner is equal to three percent or less of the container's total capacity, or, if the container's total capacity is greater than one hundred ten gallons, the volume of waste remaining in the container or inner liner is no more than 0.3 percent of the container's total capacity.

The presence of free liquids which readily separate from the solid waste portion of dangerous waste may be determined by either the paint filter test or through NDE.

2.1.2.1 Container Receipt Inspection

Container receipt inspection is a mandatory element of the verification process. One hundred percent of each shipment and transfer will be inspected at the LLBG Trenches 31 & 34 for possible damage or leaks,

complete labeling, and if present, that tamper-resistant seals are intact (Sections 2.1.2.3 and 2.1.2.4). This ensures that the shipment: (1) is received at the LLBG Trenches 31 & 34 in good condition, (2) is the waste indicated on the transfer or shipping papers, (3) has not been opened after physical and/or chemical screening was performed, and (4) is complete.

When a conformance issue exists (1.1.1.2.5), a case-by-case determination will be performed and corrective action will be taken. One of the following actions may be taken as appropriate, in response to a conformance issue:

- Implementation of the contingency plan according to HNF-IP-0263-BG, Building Emergency Plan for Low-Level Burial Grounds
- Resolution of conformance issues where additional information is needed to safely manage the waste are resolved.
- Continuation of verification for waste with conformance issues not meeting all of the above criteria.

2.1.2.2 Physical Screening and Chemical Screening Determination

A description of the activities for selecting containers for physical and chemical screening will be maintained at LLBG Trenches 31 & 34. Means of selecting containers for physical and chemical screening will be applied based on the pre-shipment and/or waste stream review process. The container selection is based on the contents listed in the associated shipment/waste stream documentation and historical documentation and operational experience.

Two criteria will be used in making the selection. The first criterion is based on whether pre-shipment review activities (document and characterization review) identify areas of potential concern. The second criterion is reviewing the current physical screening percentage (calculated according to Section 2.1.2.3.2) of containers offered for acceptance from said waste stream from said generator that have been offered over the past 12 months or the date of the last physical screening adjustment, whichever is most recent. The rate will be applied as compared to those that have been physically screened. This criterion ensures that the minimum physical screening rates required by this WAP will be met.

The number of containers selected for physical screening per waste stream will be determined by comparing the calculated percentage rate which is then adjusted according to the PES. This selected group of containers constitutes a sample set.

After the required percentage verification on the shipment has been completed, the container(s) is scheduled for shipment.

2.1.2.3 Physical Screening Process

Physical screening is a verification element. This section describes the requirement pertaining to methods, frequency, and exceptions concerning the use of physical screening as a verification element. Physical screening could be performed before the waste is shipped to LLBG Trenches 31 & 34. When physical screening is performed at a location not within the SWOC TSD units, tamper-resistant seals are applied to each container after examination. Upon receipt at LLBG Trenches 31 & 34, tamper-resistant seals are verified as intact to ensure that no changes have occurred to the waste content during shipment to LLBG Trenches 31 & 34. Documentation of physical screening is maintained in accordance with Section 8, Recordkeeping.

2.1.2.3.1 Physical Screening Methods

The following physical screening methods comply with the requirement to verify a waste.

1. Visual inspection (opening the container or observing packaging).
2. NDE.

Refer to Section 2.1.2.6 for QC pertaining to physical screening. (Refer to Section 3.1 for the criteria and rationale for choosing a physical screening method.)

Waste packaging that is witnessed by LLBG Trenches 31 & 34 personnel or its representative at a non-SWOC TSD Unit is considered to have met the physical screening requirements denoted in this WAP, provided that the packaging meets the requirements of WAC 173-303 and that the witness is qualified to determine that the waste meets LLBG Trenches 31 & 34 waste acceptance requirements. On closure of the container, tamper-resistant seals must be applied to ensure the integrity of the contents. Processes will be maintained by the LLBG Trenches 31 & 34 detailing the requirements for adding and/or removing tamper-resistant seals.

2.1.2.3.2 Physical Screening Frequency

The minimum physical screening frequency will be 5 percent for all onsite generators, applied per waste stream per generator per year. For offsite generators, the minimum physical screening frequency is 10 percent per waste stream per generator per year. The LLBG Trenches 31 & 34 operating organization adjusts the physical screening frequency for generators based on objective performance criteria (refer to Section 1.1.1.2.6).

If a container fails verification, the waste stream physical screening frequency will be raised to 100 percent for the next containers offered. Subsequent containers offered will be evaluated through the PES for verification rates, as described in Section 1.1.1.2.4.

2.1.2.3.3 Physical Screening Exceptions

The following are exceptions to the physical screening process outlined previously (Ecology 1997).

- Shielded, classified, and remote-handled mixed waste are not required to be physically screened; however, the LLBG Trenches 31 & 34 operating organization performs a more rigorous documentation review and obtains the raw data used to characterize the waste (less than 1 percent of current waste receipts). For classified waste, it is necessary to have an appropriate U.S. Department of Energy security clearance and a need to know the information as defined by the classifying organization or agency.
- Waste that physically cannot be screened at LLBG Trenches 31 & 34 or an associated screening unit must be physically screened at the generator location [e.g., large components, containers that cannot be opened, for as low as reasonably achievable (ALARA) purposes, or does not fit into a NDE unit]. Physical screening at the generator location consists of performing a more rigorous documentation review, opening of packages when possible and observing the packaging of the waste.
- Waste that is packaged by a trained LLBG Trenches 31 & 34 -delegated representative(s) is considered to have met the physical screening requirements as denoted within this WAP.
- Waste that has been packaged and physically screened at a SWOC TSD unit.

2.1.2.4 Chemical Screening Process

Chemical screening is a verification element. This section describes methods, frequency, and exceptions for chemical screening. Chemical screening may be performed before the waste is shipped to the LLBG Trenches 31 & 34. When screening is performed at a location not within the SWOC TSD units, tamper-resistant seals will be applied to each container examined and, on receipt at LLBG Trenches 31 & 34, verified as acceptable to ensure that no changes could have occurred to the waste content before receipt at LLBG Trenches 31 & 34. Processes will be maintained by the LLBG Trenches 31 & 34 operating organization detailing the requirements for adding and/or removing tamper-resistant seals. Chemical screening documentation will be maintained in accordance with Section 8, Recordkeeping.

Unless otherwise noted, tests are qualitative, not quantitative. The objective of chemical screening is to obtain reasonable assurance that the wastes are generally consistent with the description on the container

shipping documentation. The following tests are selected depending on the waste matrix and the applicability of the method.

- pH
- Peroxide
- Oxidizer
- Water reactivity
- Halogenated Organic Carbons - HOC (chlor-n-oil/water/soil)
- Headspace
- Sulfide
- Cyanide
- Paint filter.

Refer to Section 2.1.2.6.2, Chemical Screening Quality Control for QC information. Processes will be maintained by the LLBG Trenches 31 & 34 that define the basis for selecting screening tests.

2.1.2.4.1 Chemical Screening Frequency

At a minimum, 10 percent [round up to the nearest whole number of container(s)] of the mixed or dangerous waste containers verified by physical screening (Section 2.1.2.3) must be screened chemically (Ecology 1997).

Small containers of waste (labpacks), not otherwise identified in the exceptions and packaged in accordance with WAC 173-303-161, will be screened chemically in accordance with the chemical screening frequency of the waste stream as determined by the PES team (1.1.1.2.2). Inner containers are segregated by physical appearance. At least one container from each group (or three containers if all are similar) will be screened chemically.

2.1.2.4.2 Chemical Screening Exceptions

Chemical screening is not required for the following:

- Small containers of waste in over-packed containers (labpacks) packaged in accordance with WAC 173 303-161 and not prohibited under LDR specified in WAC 173-303-140.
- Waste exempted from the physical screening requirements (Section 2.1.2.3.3).
- Commercial chemical products in the original product container(s) (e.g., off-specification, outdated, or unused products).
- Chemical containing equipment removed from service, (e.g., ballasts, batteries).
- Waste containing asbestos.
- Waste, environmental media, and/or debris from the cleanup of spills or release of single substance or commercial product or otherwise known material (e.g., material for which an MSDS can be provided).
- Confirmed noninfectious waste (e.g., xylene, acetone, ethyl alcohol, isopropyl alcohol) generated from laboratory tissue preparation, slide staining, or fixing processes.
- Hazardous debris as defined in WAC 173-303-040.
- Other special cases could be exempted on a case-by-case basis with Ecology approval.

The aforementioned wastes are exempted from chemical screening and will be documented in accordance with Section 8, Recordkeeping.

2.1.2.5 Sampling for Confirmation Screening

Sampling will be performed in accordance with WAC 173-303-110(2) to ensure that the samples are representative of the waste being sampled. A representative sample will be obtained for chemical screening. The chemical screening methods do not require any sample preservation methods because the screening tests are performed at the time and location of sampling, or as soon as possible thereafter. During the interim period, the samples will be stored in a manner that maintains chain of custody and protects the sample composition.

2.1.2.6 Quality Assurance and Quality Control for Confirmation Process

The following QA and quality control (QC) elements will be used by the LLBG Trenches 31 & 34 operating organization to ensure that the confirmation activities generate the data essential to providing an indication that waste received is as described in the pre-shipping documentation. Data quality objectives have been established in accordance with Tri-Party Agreement (TPA) Action Plan, Section 6.5. In addition, all screening equipment requiring calibrations will be checked before use to ensure that calibration dates are current and equipment is functioning properly. This check will be documented in equipment log books.

2.1.2.6.1 Physical Screening Quality Control

This section describes the QC used by LLBG Trenches 31 & 34 operating organization to ensure that reliable data are obtained when performing physical screening methods identified in Section 2.1.2.3, except visual inspection. Physical screening QC will be used only to ensure that quality data are obtained when performing NDE. QC objectives for visual inspection will be performed by properly trained personnel through training as specified in the PRC-STD-TQ-40227, Low Level Burial Grounds Dangerous Waste Training Plan.

The following QC elements apply to NDE used for physical screening:

- A resolution test will be performed at the beginning of a shift. A shift ends when shutdown activities are performed. A shift can be up to 24-hours.
- A radiographer will be qualified per SNT-TC-IA, Level II certification of American Society of Nondestructive Testing training.
- Examination must cover 100 percent of the waste in the container.

2.1.2.6.2 Chemical Screening Quality Control

The following QC elements will be used when performing chemical screening.

- Appropriate sample containers and equipment will be used.
 - Containers and equipment of the appropriate size that are chemically compatible with the waste and testing reagents will be used.
- Reagent checks.
 - Water that is reagent grade and from a documented source will be used.
 - Chemicals and test kits will be labeled so that these are traceable and documented in the Hanford Facility Operating Record, LLBG Trenches 31 & 34 unit-specific portion.
 - QC checks will be performed on each lot of test kits and associated reagents according to the test kit instructions and documented in the Hanford Facility Operating Record, LLBG Trenches 31 & 34 unit-specific portion.
 - If the QA/QC checks for a specific test kit are not within the acceptable range based on the manufacturer's instructions, the test kit will be removed from service. A new test kit will be put into service after satisfactorily passing the required QC checks.

2.1.3 Waste Acceptance

Initial acceptance of waste occurs only after the confirmation process described in Section 2 is complete. Conformance issues identified during the confirmation process will be documented and managed in accordance with Section 1.1.1.2.5 and includes:

- Waste does not match approved profile documentation,
- Designation, physical, and/or chemical characterization discrepancy,
- Incorrect LDR paperwork,
- Manifest Discrepancies as described in WAC 173-303-370(5)(a) [for offsite shipments unless Permit Conditions II.P.2 can be utilized for an alternate tracking system].
- Packaging discrepancy.

When conformance issues are not resolved prior to acceptance, the waste can be accepted when tracked for discrepancy resolution. The discrepancy resolution activities will be tracked to completion (refer to Section 2.5).

2.2 Waste Transfers Between SWOC TSDs

Transfers from other SWOC TSD Units to the LLBG Trenches 31 & 34 may be necessary to dispose of waste, perform verification, obtain additional knowledge to support treatment/disposal, or to perform treatment. For waste being transferred from other SWOC TSD Units to LLBG Trenches 31 & 34, the following requirements apply.

2.2.1 Waste Stream Approval Process

The waste stream must already have been approved using the process described in Section 2.1.1. Waste Knowledge exceptions apply as described in Section 2.1.1.3. The amount and type of data that exists for a given waste package can vary widely and depends on the documentation requirements in effect when the waste was previously accepted. Previously accepted waste is not re-profiled.

2.2.2 Waste Transfer Approval Process

A technical review of documentation associated with all containers in the shipment will be performed prior to transfer from other SWOC TSD Units to LLBG Trenches 31 & 34 and documented in accordance with Section 8, Recordkeeping. When necessary, the waste management path (waste specification record) previously assigned to the waste stream will be updated and re-labeling will be completed before the transfer. Waste will be tracked at the LLBG Trenches 31 & 34 in accordance with Section 1.1.1. As new information is obtained on the waste, the container will be managed to meet any new requirements. Updates to container data prior to transfer and subsequent processing activities will be maintained in accordance with Section 8, Recordkeeping.

2.2.3 Verification

For container receipt inspection, all of the containers of each transfer will be visually inspected for damage and to ensure that the waste containers are those indicated on the supporting documentation. This activity is the means for identifying any document conformance issues or damaged containers before receipt/acceptance into LLBG Trenches 31 & 34. Conformance issues identified during receipt are managed as described in Section 1.1.1.2.5.

Transfers from other SWOC TSD Units to LLBG Trenches 31 & 34 are subject to physical screening, the PES, and chemical screening only if the waste package has not been previously subjected to the process. If a waste package has been verified, further verification upon transfer within SWOC is not required.

2.3 Waste Retrieval Project Waste Transfers

The LLBG Trenches 31 & 34 does not accept WRP waste transfers. WRP waste will be transferred and processed at other SWOC TSD units or an off-site TSD facility. Any acceptance of WRP waste at LLBG Trenches 31 & 34 will occur as newly generated waste (2.1) or as a SWOC Transfer (2.2).

2.4 LLBG Trenches 31 & 34 and Associated Container Storage Units Generated Waste

The LLBG Trenches 31 & 34 and the associated container storage units generate dangerous or mixed waste while processing. This waste material consists of items including, but not limited to: personal protective equipment, rags, and spent equipment contaminated with dangerous cleaning agents, lubricants, paints, and run-off from LLBG Trenches 31 & 34 and the associated container storage units. Operational Knowledge is used to characterize these waste materials for the purposes of waste designation. Waste generated by LLBG Trenches 31 & 34 and the associated container storage units is considered accepted for storage at LLBG Trenches 31 & 34 when the waste is generated and may meet disposal requirements. All Knowledge and confirmation of Knowledge concerning LLBG Trenches 31 & 34 generated wastes will be documented in accordance with Section 8, Recordkeeping.

2.4.1 Waste Stream Approval Process

Documenting operational Knowledge constitutes the waste stream approval process.

2.4.2 Waste Transfer Approval Process

No transfer occurs while the waste resides in LLBG Trenches 31 & 34. If the waste is transferred to another SWOC unit, the requirements for a SWOC transfer in Section 2.3 apply.

2.4.3 Verification

Any container is exempt from verification requirements when the container resides in LLBG Trenches 31 & 34. Verification requirements include the container receipt inspection, physical screening, the PES, and chemical screening.

2.5 Discrepant Container Management

During the waste acceptance process or during subsequent management of waste at any of the LLBG Trenches 31 & 34, an issue can arise where a container will be identified with a discrepant item(s) and will be called a "discrepant container" until the issue is resolved. The following list of issues will be tracked under the discrepant container management program:

- Indications of bulging,
- Containers with unknown contents,
- Containers holding waste prohibited under Section 1.2,
- Knowledge is needed to properly manage the waste according to the waste knowledge exception requirements in Section 2.1.1.3.1(3),
- Conformance issue is not resolved prior to acceptance in Section 2.1.3,
- Containers no longer in good condition and not in compliance with 40 CFR 265.171,
- Inconsistent inventory between container contents and the record, and
- Unexpected liquids are found.

The following processes and criteria will be initiated for a discrepant container:

- An evaluation will be performed on available historical data. In addition, interviews could be performed with generator points-of-contact, NDE personnel, etc.
- Nonempty Containers as defined in WAC 173-303-160(2), in which liquids are discovered, will be placed in secondary containment that meets the requirements of WAC 173-303-630(7)(a). Containers with discovered liquids and with sufficient added absorbent to completely absorb the liquids and meet the other requirements of WAC 173-303-630(7)(c), may be managed in

container storage units without secondary containment. For combination packages¹, if the liquids are only present within inner containers and no free liquids are present in the outer container, the external container will serve as secondary containment, provided that the combination package can be managed in a manner that meets the requirements of WAC 173-303-630(7)(a) and the compatibility requirements in WAC 173-303-395(1).

- When additional information about the waste becomes available to warrant a compatibility evaluation, an evaluation will be performed to ensure the compatibility with the other materials in the container and with the outer container in accordance with WAC 173-303-395(1)(b). This evaluation will be documented in the Hanford Facility Operating Record, LLBG Trenches 31 & 34 unit-specific portion in accordance with WAC 173-303-395(1)(c). Liquids not determined to be compatible with the waste contents or the container will be segregated.
- If adequate information is unavailable to determine the liquids constitute an imminent hazard, the container will be segregated as incompatible waste. The contents will be considered "unknown contents" and placed as a priority for discrepancy resolution.
- For waste where the generator can be contacted, the generator will be requested to provide additional information. The container will be dispositioned by either returning it to the generator (provided it can be transported safely and compliantly) or by resolving the discrepancy on the container at LLBG Trenches 31 & 34 container storage pads, or shipping the container off-site to a permitted TSD facility.
- Based upon the evaluation of information (hazards identified), the container will be managed in a safe configuration.
- The container will be tracked for discrepancy resolution.

2.6 Sampling and Analysis Plans

A sampling and analysis plan (SAP) may be developed outside the WAP to support the characterization of waste for various projects. A SAP provides sufficient detail to ensure that sampling personnel and the analytical laboratory correctly implement the DQOs and quality assurance project plan requirements pursuant to TPA action plan, Section 6.5. SAPs can utilize existing Knowledge, historical information, and/or additional analytical data in combination with sampling requirements as identified in the SAP to sufficiently characterize a waste stream for acceptance into LLBG Trenches 31 & 34. Ecology will review all SAPs and SAP revisions associated with this WAP prior to their implementation.

¹ A combination package is any configuration where dangerous and/or mixed wastes are confined within (inner) containers, which are in turn stored within secondary, external (outer) containers. Examples include labpacks, certain overpacks, portable spill pallets, or any container configuration that has an outer container with one or more inner containers.

3. SELECTING WASTE ANALYSIS PARAMETERS

Physical and chemical screening parameters for verification will be chosen from those in Sections 3.1 and 3.2. Parameters for waste designation and meeting LDR requirements are addressed in Section 3.3. Each physical and chemical screening result must be in agreement with the shipping documentation. Conformance issues identified during the confirmation process are documented and managed in accordance with Section 1.1.1.2.5. Parameters, methods, and rationale for physical and chemical screening parameters appear in Table 2 below.

Table 2 Parameters and Rationale for Physical and Chemical Screening

| Parameter | Method ^a | Rationale for Selection |
|---|--|---|
| Physical Screening | | |
| Visual inspection | Field method – observe phases, presence of solids in waste | Confirm consistency between waste and shipping documentation and determine the presence of free liquids. |
| Nondestructive evaluation | Field method | Confirm consistency between waste and shipping documentation and determine the presence of free liquids. |
| Chemical Screening | | |
| Ignitability and/or headspace for volatile organic compound screening | Organic vapor monitor, colorimetric gas sampling tubes, or a lower explosive level meter | Confirm consistency between waste and shipping documentation; evaluate whether the requirements of ensure WAC 173-303-395(1)(b) must be applied to management of the waste container. |
| Peroxide | Field peroxide test paper | Confirm consistency between waste and shipping documentation; evaluate whether the requirements of ensure WAC 173-303-395(1)(b) must be applied to the management of the waste container. |
| Liquids | SW-846, Method 9095, Paint Filter Liquids Test | Confirm consistency between waste and shipping documentation; evaluate whether the requirements of WAC 173-303-395(1)(b) must be applied to the management of the waste container. |
| pH | Field pH screen (pH paper method) | Confirm consistency between waste and shipping documentation; evaluate whether the requirements of ensure WAC 173-303-395(1)(b) must be applied to the management of the waste container. |
| Oxidizer | Field potassium iodide test paper | Confirm consistency between waste and shipping documentation; ensure evaluate whether the requirements of WAC 173-303-395(1)(b) must be applied to the management of the waste container. |
| Water reactivity | Field water mix screen | Confirm consistency between waste and shipping documentation; ensure evaluate whether the requirements of |

| | | |
|-----------------------------|---|---|
| | | WAC 173-303-395(1)(b) must be applied to the management of the waste container. |
| Cyanides | Field cyanide screen | Confirm consistency between waste and shipping documentation; ensure evaluate whether the requirements of WAC 173-303-395(1)(b) must be applied to the management of the waste container. |
| Sulfides | Field sulfide screen | Confirm consistency between waste and shipping documentation; ensure evaluate whether the requirements of WAC 173-303-395(1)(b) must be applied to the management of the waste container. |
| Halogenated Organic Carbons | Screening test method for PCBs in transformer oil (SW-846, Method 9079) | Confirm consistency between waste and shipping documentation; evaluate whether the requirements of WAC 173-303-395(1)(b) must be applied to the management of the waste container. |

^a Processes based on manufacturer's recommended methodology for test kit or testing equipment, unless otherwise noted. When regulations require a specific method, the method will be followed.

3.1 Physical Screening Parameters

The following methods are approved for use in performing physical screening:

(1) Visual inspection (preferred method for physical screening):

Rationale: This method meets the requirement to ensure consistency between waste containers and the accompanying waste stream documentation.

Method: The container is opened and the contents are removed as needed for visual examination or the packaging by the generator will be observed. Homogenous loose solids are probed to determine the presence of material not documented on the waste stream documentation, or for improperly absorbed liquids. Visual observations are compared with the applicable profile information and the container specific information in the waste stream documentation.

Failure criteria: A container fails inspection for any of the following reasons; (a) undocumented, improperly packaged, or inadequately absorbed liquids; (b) discovery of prohibited articles or materials listed in Section 1.2; (c) discovery of material not consistent with the applicable waste stream documentation; and (d) variability greater than 25 percent by volume in listed constituents (e.g., paper, plastic, cloth, and metal).

(2) NDE:

Rationale: This method meets the requirement to ensure consistency between waste containers and the accompanying waste stream documentation. This method will also be subject to the QA requirements listed in Section 2.1.2.6. Containers that are not easily amenable to visual inspection because of physical or radiological content, or unit availability can be examined safely and economically.

Method: The container is scanned with a NDE system. Data are observed on a video monitor and captured and recorded. Personnel experienced with the interpretation of NDE imagery record their observations. These observations are compared to the contents listed on the waste stream documentation.

Failure criteria: A container fails the inspection for any of the following reasons; (a) undocumented, improperly packaged, or inadequately absorbed liquids; (b) discovery of prohibited articles listed in Section 1.2; (c) image data not consistent with the applicable waste stream

documentation; and (d) variability greater than 25 percent by volume in listed constituents (e.g., paper, plastic, cloth, and metal).

3.2 Chemical Screening Parameters

The following methods are approved for use in performing chemical screening tests. Chemical screening is used to verify that incoming waste is consistent with waste stream documentation. Failure of a chemical screening test is defined as a chemical screening result that is inconsistent with the associated waste stream documentation.

(1) Ignitability and/or headspace volatile organic compound screening:

Rationale: To determine the potential ignitability and the presence or absence of volatile organic compounds in waste and to alert personnel to potential hazards. These methods are used when containers are opened for inspection. These methods can be applied to any matrix.

Methods: A sample of the headspace gases in a container is analyzed by one or more of the following types of portable instrumentation: organic vapor monitor, colorimetric gas sampling tubes, or a lower explosive level meter.

Failure criteria: High organic vapor readings in matrices not documented or detected as having volatile organic content constitutes failure.

(2) Peroxide screening:

Rationale: To determine the presence of organic peroxides in solvent liquid wastes, to alert personnel to potential hazards, to ensure safe segregation and storage of incompatible wastes, and to confirm consistency with the waste stream documentation. The test is sensitive to low parts per million ranges.

Method: A peroxide test strip is dampened with a pipet sample of liquid waste. Solids are tested by first wetting the test strip with water and contacting a small sample of the waste. A blue color change indicates a positive reaction. The color change can be compared with a chart on the packaging to determine an approximate organic peroxide concentration.

Failure criteria: Peroxide concentrations greater than 20 parts per million in liquid waste constituents that are known organic peroxide formers not documented as having been stabilized constitutes failure. Results that are not consistent with documented constituents fail verification.

(3) Paint filter liquids test:

Rationale: To verify the presence or absence of free liquid in solid or semisolid material.

Method: To a standard paint filter, 100 cubic centimeters or 100 grams of waste are added and allowed to settle for 5 minutes. Any liquid passing through the filter signifies failure of the test. The required method for the paint filter liquids test is method 9095 in the U.S. Environmental Protection Agency (EPA), SW-846, *Test Methods for Evaluating Solid Waste, Physical/Chemical Methods* (the most recently promulgated version) (EPA 1986).

Failure criteria: Failure of the test in waste matrices not documented as having free liquids constitutes failure of the container. Small quantities of condensate trapped in inner plastic liner folds are acceptable.

(4) pH screen:

Rationale: To identify the pH and corrosive nature of an aqueous or solid waste, to ensure safe segregation and storage of incompatible waste, and to confirm consistency with the waste stream documentation.

Method: Field verification of pH measurement is performed using pH test paper.

Failure criteria: If the pH of a matrix exceeds regulatory limits (less than or equal to 2.0 or greater than or equal to 12.5) in waste not documented as being regulated for this property, or the measured pH is inconsistent with the waste container documentation, the container fails verification.

(5) Oxidizer screen:

Rationale: To determine if a waste exhibits oxidizing properties, to ensure safe segregation and storage of incompatible waste, and to confirm consistency with the waste stream documentation. This test can be applied to waste liquids, solids, and semisolids.

Method: 1 or 2 drops of 3N HCl acid is added to the Oxidizer test paper (potassium iodide, starch). The test paper is touched to a pea size sample of the waste to be tested. A black, blue/black, or purple color change determines a positive oxidizer test.

Failure criteria: A positive indication in a waste that is not consistent with documented constituents fails verification.

(6) Water reactivity screen:

Rationale: To determine if the waste has the potential to vigorously react with water to form gases or other reaction products. This information is used to ensure safe segregation and storage of incompatible waste, and to confirm consistency with the waste stream documentation.

Method: 2 or 3 drops of distilled water is added to an oxidizer test paper strip. The test paper is touched to a pea size sample of the waste to be tested. The observance of effervescence, a violent reaction, flaming or boiling indicates a positive test.

Failure criteria: A positive or negative indication in a waste that is not consistent with documented constituents fails verification.

(7) Cyanide screen:

Rationale: To indicate if waste could release hydrogen cyanide on acidification near pH 2. This information is used to ensure safe segregation and storage of incompatible waste and to confirm consistency with the waste stream documentation.

Method: A pea size sample of the waste to be tested is dissolved in a small quantity of water. A mixture of ferrous ammonium sulfate and ferrous ammonium citrate is added to the stoppered test tube. The sample is then shaken and 3N HCl is added to the solution. A dark Prussian blue color change indicates the presence of the acid.

Failure criteria: A positive or negative indication in a waste that is inconsistent with documented constituents fails verification.

(8) Sulfide screen:

Rationale: To indicate if the waste could release hydrogen sulfide on acidification near pH 2. This information is used to ensure safe segregation and storage of incompatible wastes and to confirm consistency with the waste stream documentation.

Method: 5 drops of 3N HCl acid is added to a pea size sample of the waste to be tested. Lead acetate test paper is touched to the sample. A brown or black color change of paper indicates a positive test.

Failure criteria: A positive or negative indication in a waste that is inconsistent with documented constituents fails verification.

(9) Halogenated Organic Carbons screen:

Rationale: To indicate whether PCBs or other chlorinated solvents are present in the waste. This information is used to confirm consistency with the waste stream documentation and to determine if additional information/data are needed to properly store and treat the waste.

Methods: Field organic chlorine tests appropriate to the matrix, such as those offered by the Dexsil Corporation (e.g., Chlor-N-Oil, Chlor-N-Soil), are used. These screening tests are available with several detection limits that enable the verification to be performed in the concentration range applicable to the proposed management path of the waste.

Failure criteria: A positive or negative indication of chlorinated organic compounds in a waste that is inconsistent with documented constituents as having chlorinated organic compounds content constitutes failure.

3.3 Analysis Parameters and Methods

Parameters needed to meet designation, characterization, and LDR requirements and associated analytical methods for dangerous or mixed waste stored, treated, and/or disposed at the LLBG Trenches 31 & 34, are identified in Table 3.

The most recent promulgated revision of SW-846 will be used for the EPA methods.

In determining the characteristic of ignitability, either the Pensky-Martens (EPA Method 1010) or the Setaflash (EPA Method 1020), must be used when testing. The characteristic of corrosivity also requires specific EPA test methods. When testing the pH of a given waste stream, EPA Method 9040 or EPA Method 9045 must be used in accordance with WAC 173-303-090(6).

Compliance with LDR for dangerous and/or mixed waste that have a treatment standard expressed as constituent concentrations in waste (CCW) [40 CFR 268.40, incorporated by reference into WAC 173-303-140] may be shown using the appropriate method in Table 3. When the waste treatment standard is expressed as constituent concentrations in waste extracts (CCWE) [40 CFR 268.40, incorporated by reference into WAC 173-303-140], then the Toxicity Characteristic Leaching Procedure (TCLP) EPA Method 1311, which is referenced in 40 CFR 268.41(a), must be performed. Following the extraction procedure (EPA Method 1311), the appropriate EPA determinative method in Table 3. Both cyanide test parameters (total and amenable) for non-waste waters will be analyzed using EPA Method 9012, 9014, 9213, or SM 4500-CN. Underlying Hazardous Constituents (UHCs) will be evaluated as required by 40 CFR 268.48.

Table 3 Analytical Parameters, Methods, and Rationale for Testing

| Parameter | Analytical Method | Matrix Type | Rationale for Analysis |
|--------------|--|-----------------------|---|
| Flashpoint | 1010, 1020 | Liquid | To determine regulatory status as D001 waste, to provide proper waste designation and to identify applicable LDR treatment standards. |
| pH liquid | 9040, SM 4500H ⁺ B ^b | Liquid, sludge | To determine regulatory status as D002 waste, to provide proper waste designation and to identify applicable LDR treatment standards. |
| pH solid | 9045 | Solid | To determine regulatory status as WSC2 waste, to provide proper waste designation and to identify applicable LDR treatment standards. |
| Free liquids | 9095 | Liquid, sludge, solid | Identify applicable LDR requirements. |
| Cyanide | 9012, 9014, 9213, SM 4500 CN ^b | Liquid, sludge, solid | To determine regulatory status as D003 waste, to provide proper waste designation and to identify applicable LDR treatment standards. |
| Sulfide | 9030 | Liquid, sludge, solid | To determine regulatory status as D003 waste, to provide proper waste designation and to identify applicable LDR treatment standards. |

| | | | |
|--|--------------------------|-----------------------|---|
| PCBs | 8082 | Liquid, sludge, solid | To determine regulatory status as WPCB waste, to provide proper waste designation and to identify applicable LDR treatment standards. |
| Total organic carbon | 9060 | Liquid, sludge, solid | To provide proper waste designation and applicability to state-only requirements, identify applicable LDR treatment standards. |
| Persistent constituents: HOC | 9076 | Oil | To determine regulatory status as WP01/WP02 waste, to provide proper waste designation and applicability to state-only requirements. |
| Persistent constituents: PAH | 8270 | Liquid, sludge, solid | To determine regulatory status as WP03 waste, to provide proper waste designation and applicability to state-only requirements. |
| Total organic halides ^e | 9020,9021,9022 | Liquid, sludge, solid | To determine regulatory status as WP01/WP02 waste, to provide proper waste designation and applicability to state-only requirements. |
| Total suspended solids | SM 2540D ^b | Liquid, sludge | To provide applicability of LDR requirements and status as a wastewater. |
| Volatile organic compounds ^d | 8260 | Liquid, sludge, solid | To determine proper waste designation, regulatory status, and applicability of LDR requirements. |
| Semi volatile organic compounds ^d | 8270 | Liquid, sludge, solid | To determine proper waste designation, regulatory status, and applicability of LDR requirements. |
| Chlorinated herbicides | 8151 | Liquid, sludge, solid | To determine proper waste designation, regulatory status, and applicability of LDR requirements. |
| Arsenic ^d | 6010, 200.8 ^c | Liquid, sludge, solid | To determine proper waste designation, regulatory status, and applicability of LDR requirements. |
| Barium ^d | 6010, 200.8 ^c | Liquid, sludge, solid | To determine proper waste designation, regulatory status, and applicability of LDR requirements. |
| Cadmium ^d | 6010, 200.8 ^c | Liquid, sludge, solid | To determine proper waste designation, regulatory status, and applicability of LDR requirements. |
| Chromium ^d | 6010, 200.8 ^c | Liquid, sludge, solid | To determine proper waste designation, regulatory status, and applicability of LDR requirements. |
| Lead ^d | 6010, 200.8 ^c | Liquid, sludge, solid | To determine proper waste designation, regulatory status, and applicability of LDR requirements. |
| Mercury ^d | 7470, 7471, 7473, | Liquid, sludge, solid | To determine proper waste designation, |

| | | | |
|---|--------------------------|-----------------------|--|
| | 200.8 ^c | | regulatory status, and applicability of LDR requirements. |
| Silver ^d | 6010, 200.8 ^c | Liquid, sludge, solid | To determine proper waste designation, regulatory status, and applicability of LDR requirements. |
| Selenium ^d | 6010, 200.8 ^c | Liquid, sludge, solid | To determine proper waste designation, regulatory status, and applicability of LDR requirements. |
| Antimony ^d | 6010, 200.8 ^c | Liquid, sludge, solid | To determine proper waste designation, regulatory status, and applicability of LDR requirements. |
| Beryllium ^d | 6010, 200.8 ^c | Liquid, sludge, solid | To determine proper waste designation, regulatory status, and applicability of LDR requirements. |
| Nickel ^d | 6010, 200.8 ^c | Liquid, sludge, solid | To determine proper waste designation, regulatory status, and applicability of LDR requirements. |
| Thallium ^d | 6010, 200.8 ^c | Liquid, sludge, solid | To determine proper waste designation, regulatory status, and applicability of LDR requirements. |
| ^a Any of the listed methods can be used. Procedures based on EPA SW-846, unless otherwise noted. ^b Standard Methods for the Examination of Water and Wastewater, 21 st Edition, American Public Health Association, 2005, or most recent version when available. ^c EPA/600/R-94/111 (EPA, May 1994), Supplement I, "Methods for the Determination of Metals in Environmental Samples" ^d When appropriate, Toxicity Characteristic Leaching Procedure will be used. ^e Estimated. LDR = land disposal restriction. PCB = polychlorinated biphenyls. | | | |

4. SELECTING SAMPLING PROCESSES

Specific sampling procedures and techniques depend on both the nature of the material and the type of packaging. Waste samples are handled and preserved as necessary to protect the sample. For treatment, preservation techniques, and holding times the procedures and techniques recommended in SW-846 will be utilized. This section describes the sampling methodology used to obtain representative samples. DQOs have been established in accordance with TPA Action Plan Section 6.5.

4.1 Sampling Strategies

Table 4 contains waste forms and sample equipment used to sample the referenced waste. Sampling of these waste forms is performed in accordance with Table 4.

4.2 Sampling Methods

Sampling methods are those described in WAC 173-303-110(2) and incorporated by reference into this WAP (Table 2).

The basic sampling sequence includes the following:

- Obtain a unique sample number and complete the sample tag before sampling.
- Obtain a pre-cleaned sampler and sample bottles.
- Attach sample label to sample bottles.
- For sampling liquid waste, use a sampler or pipet to sample for two phase liquids. Homogeneous liquids in small containers will be poured into a sample bottle.
- For sampling solid waste, use a scoop, trier, or hand auger to obtain a sample of the waste. For large containers of waste, composite several augers or scoops to ensure samples are representative.
- Fill sample containers in the following sequence: volatile organics, pH (corrosivity), ignitability, semivolatile organics, metals.
- For solid waste, wipe the exterior surfaces of the sample bottles with a dry rag.
- Attach sample labels to outer plastic bags.
- Place samples in an appropriate receptacle for transfer to the laboratory.
- Complete the chain-of-custody records and comply with chain-of-custody procedures.
- Seal and mark the receptacle in accordance with WAC 173-303-071(3)(1).
- Transfer receptacle to the analytical laboratory, as appropriate to meet sample holding times.
- Properly clean and decontaminate non-disposable sampling equipment or package for return to central sampling equipment decontamination area according to onsite requirements.

4.3 Selecting Sampling Equipment

Sampling equipment selection is detailed in Table 4. Sampling equipment needed to sample waste is maintained and decontaminated as necessary to ensure representative samples according to SW-846.

Table 4 LLBG Trench 31 & 34 Sampling Equipment

| Waste form | SW-846, Test Methods for Evaluating Solid Waste: Physical/Chemical Test Methods, Section 9., References | |
|---|---|---|
| | Waste type | Equipment* |
| Liquids | Free-flowing liquids and slurries | COLIWASA, glass thief, pipet, dip, tank bomb, and bailer samplers; and tube-type samplers |
| Solidified liquids | Sludges | Trier, scoops and shovels; tube-type samplers and augers; for small containers, a spoon may be used in place of a scoop |
| Sludges | Sludges | Trier, scoops and shovels; tube-type samplers and augers; for small containers, a spoon may be used in place of a scoop |
| Soils | Sand or packed powders and granules | Auger, scoops and shovels; tube-type samplers and augers; for small containers, a spoon may be used in place of a scoop |
| Absorbents | Large-grained solids | Large trier, scoops and shovels |
| Wet absorbents | Moist powders or granules | Trier, scoops and shovels |
| Process solids and salts | Moist powders or granules | Trier, scoops and shovels |
| | Dry powders or granules | Thief, scoops and shovels |
| | Sand or packed powders and granules | Auger, scoops and shovels |
| | Large-grained solids | Large trier, scoops and shovels |
| Ion exchange resins | Moist powders or granules | Trier, scoops and shovels |
| | Dry powders or granules | Thief, scoops and shovels |
| | Sand or packed powders and granules | Auger, scoops and shovels |
| COLIWASA = composite liquid waste sampler. | | |
| * other ASTM-approved equipment could be used to collect samples. | | |

4.4 Sample Preservation

Because samples are normally transported from the field to an analytical laboratory, some preservation is sometimes necessary to maintain the integrity of the samples. Samples shall be preserved in a manner consistent with regulatory requirements.

4.5 Establishing Quality Assurance and Quality Control for Sampling

This WAP incorporates the requirements of TPA Action Plan Section 6.5, for QA/QC. Sample collectors prepare a permanent log of sampling activities in accordance with SW-846. Records will be maintained

in accordance with Section 8, Recordkeeping. Log entries include: date of collection, time of collection, location, batch number, sample number, tank number (if applicable), copy of the chain-of-custody form, sampling methodology, container description, waste matrix (liquid), description of generating process (e.g., decontamination activities), number and volume of samples, field observations, field measurements (e.g., pH, percent lower explosive limit), laboratory destination and laboratory number, and signature. These log entries will be made by trained personnel while the sampling is performed. The logs or copies of logs will be maintained in accordance with Section 8, Recordkeeping.

Chain-of-custody records accompany samples at all times. The LLBG Trenches 31 & 34 operating organization will maintain hard copy or electronic chain-of-custody procedures to ensure accountability of waste sample handling and to guarantee sample integrity. All samples must be labeled with a unique identifier.

The following QA/QC elements will be used by LLBG Trenches 31 & 34 to ensure sampling activities for designation purposes result in acceptable laboratory data:

- Representative sampling methods as defined by WAC 173-303-110(2) and/or SW-846.
- Approved sample containers and sampling equipment per SW-846.
- Samples numbered.
- Traceable labeling system.
- Field QA/QC samples (per applicable SAP).
- Documentation of equipment calibration per equipment manufacturer specifications.
- Chain-of-custody records and corresponding chain-of-custody procedures.

5. LABORATORY SELECTION AND QUALITY ASSURANCE/QUALITY CONTROL

The selection of any laboratory will be based on the ability of the laboratory to demonstrate compliance to this section with experience and capability in the following major categories:

- Comprehensive written QA/QC program.
- Technical analytical expertise.
- Effective information management systems.

The QA and QC requirements outlined in this section are applicable to laboratory activities governed by this WAP.

5.1 Evaluation of Laboratories

All laboratories providing analytical support are required to have a current, laboratory approved QA plan. The laboratory QA plan will be submitted to Ecology in accordance with TPA Action Plan Section 6.5, for review and acceptance before commencement of analytical work. The QA plan will, at a minimum, address the following elements:

- Sample custody and management practices (also refer to Section 4).
- Sample preservation protocols.
- Sample preparation and analytical method requirements.
- Instrument maintenance and calibration requirements.
- Internal QC measures, e.g., method blanks, spikes, duplicates.
- Corrective action procedures.

Each laboratory will be audited periodically by an independent organization to evaluate the effective implementation of the laboratory's QA/QC program. QA personnel and technical experts evaluate the laboratory through onsite observations and/or reviews of the following documentation: copies of the QA/QC documents; records of surveillances/inspections; audits; non-conformances, and corrective actions. The LLBG Trenches 31 & 34 will ensure independent organizations; QA personnel and technical experts are qualified to perform these evaluations.

5.2 Quality Assurance/Quality Control Objectives

The overriding goal of the analytical program is to support the accurate designation of waste and/or demonstrate compliance to LDR standards. The certified laboratory QA/QC programs will be designed to meet the following objectives:

- Minimize errors. Errors may be introduced during preparative, analytical, and/or reporting phases of work. QC program elements include analyses of samples in accordance with established methods.
- Provide information. The designation of waste relies on a combination of Knowledge, historical data, and additional analytical data. Laboratory QA/QC programs ensure accurate, precise, reliable, and reproducible data.

Key QA program elements are designed to provide objective evidence that waste analysis methods meet the performance specifications. QA activities and implementation responsibilities are as follows:

- Activity based laboratory inspections. Inspections will be performed to verify that specific guidelines, specifications, and procedures for the activities are completed successfully.
- Laboratory analyses. Analyses will be performed by onsite or offsite laboratories on samples of waste using written and approved methods.

- Development of inspection checklists. Checklists are required for laboratory inspections and will be designed to ensure that the inspected activity is consistently addressed. Checklists will be completed during the inspection to document results.
- Instrument calibration and calibration verification. These activities are performed by the laboratory and are required for ensuring data of known accuracy and precision. Calibration data will be maintained and stored to ensure traceability to reported results.
- Laboratory QA/QC inspection results and instrumental calibrations will be documented in accordance with Section 8, Recordkeeping.

5.3 Laboratory Quality Assurance/Quality Control

All analytical work will be defined and controlled by a statement of work or other work authorizing document. These authorization documents will include QA/QC performance requirements. Samples will be handled according to controlled laboratory procedures. The accuracy, precision, and limitations of the analytical data are evaluated through QC performance.

As needed, the LLBG Trenches 31 & 34 operating organization will conduct analyses to determine completeness of information and whether waste meets the acceptance criteria for treatment, storage, or disposal at one of the Hanford Facility TSD units or those of a chosen offsite TSD facility. Testing and analytical methods will depend on the type of analyses sought. For parameters or methods not otherwise specified in Section 3, the most current revisions of the following are acceptable sources of testing methods.

- Analytical methods cited in WAC 173-303;
- The most recently promulgated version of *Test Method for Evaluating Solid Waste: Physical/Chemical Methods*, SW-846, U.S. Environmental Protection Agency, EPA, Office of Solid Waste;
- Other current U.S. EPA methods, as applicable to the matrix under evaluation;
- *Standard Methods for the Examination of Water and Wastewater*, American Public Health Association (APHA), American Water Works Association, Water Environment Federation;
- *Annual Book of ASTM Standards*, American Society for Testing and Materials;
- *AOAC Official Methods of Analysis*, AOAC (Association of Official Analytical Chemists), International.
- SW-846 methods modified to meet ALARA concerns may be performed subject to Ecology approval.

5.4 Data Assessment

Data used for decision making need to be scientifically sound, of known quality, and thoroughly documented in the Hanford Facility Operating Record, LLBG Trenches 31 & 34 unit-specific portion. LLBG Trenches 31 & 34 is responsible for the quality of the data and project usability. Data will be assessed to determine compliance with quality standards as follows.

Precision – Precision represents a measure of the degree of reproducibility of measurements under prescribed similar conditions. Sample precision is calculated on the basis of duplicate analyses. Acceptance criteria shall be established for each analyte and each analyte method and shall be agreed on by the laboratory and the client.

Accuracy – Accuracy represents the degree to which a measurement agrees with an accepted reference or true value. Sample accuracy is expressed as the percent recovery of a spiked sample. Acceptance criteria shall be established for each analyte and each analyte method and shall be agreed on by the laboratory and the client.

Representativeness – Representativeness is the degree to which data accurately and precisely represents a characteristic of a population, a parameter variation at a sampling point, a process condition, or an environmental condition. Representativeness of a population or an environmental condition depends heavily on sampling and is addressed in other documents. The issue of representativeness is addressed for the following points:

- Based on the generating process, the waste stream, and its volume, that an adequate number of sampling locations are selected
- The representativeness of selected media has been defined accurately
- The sampling and analytical methodologies as defined in Tables 2, 3, and 4
- The environmental conditions at the time of sampling will be documented in accordance with Section 8, Recordkeeping.

Completeness – Completeness is a measure of the amount of usable and/or valid data obtained from a measurement system compared to the total amount of data requested. Completeness can be used to evaluate the amount of data produced that meets the client's requirements (e.g., accuracy, precision). In some cases, data may not meet all the requirements but may still be used for qualitative information as an indicator of the presence or absence of a parameter.

Comparability – Comparability is the confidence with which one data set can be compared to another. For each analyte, comparable precision and accuracy depend on the method and sample matrix. To be comparable, similar precision, accuracy, and detection limits shall be achieved on samples with similar matrices using similar methods. Factors such as analytical method selected, detection limits or uncertainty, precision, accuracy, and matrix effects should be considered in the decision making process when data is to be compared between multiple laboratories.

6. SELECTING WASTE RE-EVALUATION FREQUENCIES

The waste profile and supporting data and documentation will be re-evaluated at least annually, or more often, if the generator has informed the LLBG Trenches 31 & 34 of a change in the waste generation process, or if waste received at the LLBG Trenches 31 & 34 or the description on the shipping documentation does not match the waste profile. If the generator has informed the LLBG Trenches 31 & 34 of a change in the waste generation process, the waste re-enters the waste stream approval process described in Section 2.1.1.1. The LLBG Trenches 31 & 34 operating organization will evaluate verification data against the waste profile to identify any waste streams for which a change in the waste generation process is suspect. When a waste stream is suspect, that waste stream will re-enter the approval process described in Section 2.1.1.1.

When a waste profile is re-evaluated, the LLBG Trenches 31 & 34 operating organization may request the generator to do one or more of the following:

- Verify accuracy of the current waste profile;
- Supply a new waste profile;
- Submit a sample for laboratory analytical chemical analysis to confirm that the waste is still within the profile parameters
- Document the nature of any generating process changes with respect to dangerous waste listing definitions.

7. SPECIAL WASTE ANALYSIS PROCEDURAL REQUIREMENTS

This section discusses special process requirements for receiving dangerous and/or mixed waste at LLBG Trenches 31 & 34.

7.1 Processes for Receiving Onsite Waste and Offsite Waste

The processes for receiving waste are described in Section 2. In general, mixed waste received from onsite generators is managed the same as waste received from offsite generators. Differences include, but are not limited to the following: (1) physical/chemical screening frequencies for verification (minimum percentages of 5 percent for waste from onsite generators and 10 percent for waste from offsite generators [note that chemical screening frequency depends on the physical screening frequency]), (2) shipping documentation (Uniform Hazardous Waste Manifests are used for waste from offsite generators and shipping documents are used for waste from onsite generators), and (3) LDR documentation requirements for mixed or dangerous waste (notification for waste from offsite generators and equivalent information from onsite generators).

7.2 Processes for Ignitable, Reactive, and Incompatible Waste

The LLBG Trenches 31 & 34 do not receive ignitable, reactive, or incompatible waste. Pre-shipment review and/or chemical screening requirements in Section 2 will be used to identify whether the waste is ignitable, reactive, or incompatible. The LLBG Trenches 31 & 34 waste acceptance requirements identifies certain management requirements to ensure ignitable, reactive, or incompatible waste is not received.

A compatibility review will be performed on wastes being considered for acceptance into the LLBG Trenches 31 & 34: (1) during the waste acceptance process based upon waste chemical characteristics, and/or (2) when additional information becomes available on waste form or waste constituents. The compatibility review for the WRP Waste will be performed on the information contained in the Acceptable Knowledge documentation for the waste stream. If additional information becomes available during the waste processing steps, the compatibility of the waste container/stream will be re-evaluated.

The compatibility review process covers compatibility between chemicals within a waste matrix, compatibility between multiple containers within a lab pack, and compatibility between a waste container and the waste it contains. The storage category (hazard class) will be updated as necessary following the compatibility review. The storage category will be used to ensure incompatible wastes are not stored together. The chemical compatibility matrix used is consistent with approach documented in *A Method for Determining the Compatibility of Hazardous Waste* (Hatayama *et al*, 1980) (<http://www.uos.harvard.edu/ehs/environmental/EPACChemicalCompatibilityChart.pdf>).

The compatibility review process considers the available characterization data and waste designation. The conditions against which compatibility will be measured include the following:

- Amount of material.
- Stability of components and reactivity.
- Consequence of inner containers breaking.
- Compatibility of waste with absorbent.
- Container material.
- Liner Compatibility.

7.3 Provisions for Compliance with Federal and State Land Disposal Restriction Requirements

State-only and federal LDR requirements restrict the land disposal of certain types of waste subject to the *Hazardous Waste Management Act of 1976*. Waste managed on the Hanford Facility falls within the

purview of these LDRs per 40 CFR 268, incorporated by reference by, WAC 173-303-140. Waste constituents that are subject to LDRs are identified in 40 CFR 268.40, incorporated by referenced by WAC 173-303-140. Waste must meet certain treatment standards, as specified in 40 CFR 268, incorporated by reference by, WAC 173-303-140, if the waste is to be land disposed.

Generators are required to determine the treatment standards applicable to the wastes they generate at the point of generation, [40 CFR 268.7(a)], and make an evaluation of whether or not these treatment requirements have been satisfied. Each waste subject to concentration-based treatment standards will be analyzed for those LDR constituents contained in the listed and characteristic waste numbers identified by the generator, including any UHC identified by 40 CFR 268.2(i), if the Knowledge of the generator is not sufficient to make complete constituent determinations. If the LDR waste does not meet the applicable treatment standards, the generator provides waste information with each shipment stating so, in accordance with WAC 173-303-380(1)(j),-(k),-(l),-(m),-(n), or -(o). If the waste meets the LDR standards, the generator must send a certification that the waste meets the treatment standards.

Mixed waste constituents that are subject to LDRs are identified in 40 CFR 268.40 by reference in WAC 173-303-140(2), the extremely hazardous waste disposal requirements for DOE facilities contained in RCW 70.105.050(2), and the state-only LDRs contained in WAC 173-303-140(4)(b)-(d). The mixed waste must meet certain treatment standards, as specified in 40 CFR 268.40, RCW 70.105.050(2), and WAC 173-303-140(4)(b)-(d), if the waste is to be land disposed. Any waste requiring LDR treatment must be treated prior to acceptance into LLBG Trench 31 and 34 for disposal.

7.4 Sampling and Analytical Methods

It is recognized that ALARA concerns may warrant modifications to the methods to ensure appropriate protection of personnel health and safety without impact to the method or sample integrity. Waste analyzed using SW-846 methods modified to address ALARA protection concerns are considered acceptable provided the applicable data quality objectives specified in the modified SW-846 methods will be met.

Samples of waste will be transferred to an onsite laboratory or shipped offsite to a laboratory for analysis. Samples will be collected in accordance with SW-846 and as described in Section 4. Sample storage is provided for waste containers while awaiting laboratory analysis results.

7.5 Waste Treatment

Waste must be treated to meet LDR as specified in WAC 173-303-140.

Waste managed at the LLBG Trenches 31 & 34 must already be treated to meet applicable treatment standards prior to receipt, except when waste described below will be treated in LLBG Trench 31 & 34. The alternative treatment standards for hazardous debris as specified in 40 CFR 268.45 or for contaminated soil as specified in 40 CFR 268.49 may also be used. When dealing with multiple dangerous waste numbers, both standards may apply, requiring a treatment train for ultimate compliance to LDR.

Treatment authorized in LLBG Trenches 31 & 34 includes hazardous debris immobilization technologies and macro-encapsulation treatment technology (MACRO). Treatment will be limited to those technologies that can be employed in/on containerized mixed waste, and will not be performed on the operational layer of the trenches. Hazardous debris immobilization technologies (i.e., macroencapsulation, microencapsulation, and sealing) are based on the requirements in 40 CFR 268.45, Table 1 Alternative Treatment Standards for Hazardous Debris. Macro-encapsulation treatment technology (MACRO) requirements are based on 40 CFR 268.42, Table 1 Technology Codes and Description of Technology-Based Standards.

Waste forms that can be treated include mixed waste in unique, large, and/or difficult-to-handle forms (e.g., large boxes, long-length equipment, pumps, valves, columns, and cylinders), radioactive lead solids, and other forms approved by Ecology to use these treatment technologies through appropriate processes

such as 40 CFR 268.42(c) or 40 CFR 268.44(h). Management of the waste containers at or near the mixed waste trenches will not constitute land disposal (per the definition of that term in WAC 173-303-140(3)(b)) until the contractor completes treatment and verification that satisfies the land disposal restriction treatment requirements.

7.6 Land Disposal Restriction Certification of Treatment

When LDR treatment has been completed and required treatment has been verified (either through analytical results, for LDR treatment standards expressed as constituent concentrations, or documentation that the required treatment method has been applied successfully for treatment standards expressed as a method of treatment), certification of the LDR treatment is prepared by either the generator or treatment unit which could include the LLBG Trenches 31 & 34 operating organization. The certification statement will be prepared in accordance with 40 CFR 268.7(b, d, and e). A copy of the certification will be placed in the Handord Facility Operating Record, LLBG Trenches 31 & 34 unit-specific portion.

When an LDR waste does not meet the applicable treatment standards set forth in 40 CFR 268.40 and WAC 173-303-140, or exceeds the application prohibition levels set forth in 40 CFR 268.32, this information is placed in the Handord Facility Operating Record, LLBG Trenches 31 & 34 unit-specific portion, in accordance with WAC 173-303-380(1).

8. RECORDKEEPING

Recordkeeping requirements applicable to the Hanford Facility Operating Record, LLBG Trenches 31 & 34 unit-specific portion are described as follows:

- a. Confirmation records described in Section 2.
- b. Waste information documentation described in Section 2.
- c. Waste sampling records and associated documentation described in Sections 3 and 4.
- d. Laboratory records and associated documentation described in Section 5.
- e. Documentation regarding waste re-evaluation frequencies described in Section 6.
- f. Special waste analysis requirement documentation described in Section 7.

9. REFERENCES

ASNT, 2001, *Personnel Qualification and Certification in Nondestructive Testing*, SNT-TC-1A, American Society for Nondestructive Testing, Columbus, Ohio.

Code of Federal Regulations, as revised, Office of the Federal Register National Archives and Records Administration.

Ecology 1997, Close out of May 21, 1996 Dangerous Waste Compliance Inspection of Mis-Designated Waste Received at Hanford, Washington State Department of Ecology, Richland WA, April 11, 1997 (Enclosure dated April 2, 1997).

Ecology, 2004a, Administrative Order #1671, Washington State Department of Ecology, Lacey WA, September 21, 2004

Ecology, 2004b, Clarification on Administrative Order #1671, Washington State Department of Ecology, Lacey WA, September 22, 2004

Ecology, 2004c, Clarification Administrative Order #1671, Washington State Department of Ecology, Lacey WA, September 24, 2004

EPA, 1983, *Methods for Chemical Analysis of Water and Wastes*, EPA-600/4-7-020, U.S. Environmental Protection Agency, Environmental Monitoring and Support Laboratory, Cincinnati, Ohio.

EPA, 1986, *Test Methods for Evaluating Solid Waste: Physical/Chemical Methods, Third Edition; Final Update III-B*, SW-846, as amended, Office of Solid Waste and Emergency Response, U.S. Environmental Protection Agency, Washington, D.C. Available on the Internet at www.epa.gov/SW-846/main.htm.

HNF-IP-0263-BG, Building Emergency Plans for Low-Level Burial Grounds

NIOSH, as amended, *Registry of Toxic Effects of Chemical Substances*, U.S. Department of Health and Human Services, Public Health Service Centers for Disease Control and Prevention national Institute for Occupational Safety and Health. Available on the Internet at <http://www.cdc.gov/niosh/97-119.html>.

PRC-STD-TQ-40227, Low Level Burial Grounds Dangerous Waste Training Plan

WAC 173-303, "Dangerous Waste Regulations," *Washington Administrative Code*, as amended, Washington State Department of Ecology, Olympia, Washington.

This page intentionally left blank.