

# START

0013327  
11

DON'T SAY IT - WRITE IT

To: Tami Bohling

Date: March 22, 1991

From: Fred Roeck *FR*

Subject: Changes to the Remedial Investigation/Feasibility Study Work Plans for the 100-KR-1 and 100-KR-4 Operable Units, Draft C

Attached are several pages that DOE-RL requested be replaced in the subject work plans. The pages directly replace all of Chapter 6.0 in the applicable plans. The substitutions should be completed for all of the EDMC file copies so that they are fully representative of the public review version being forwarded to the EPA.

If you have any question please call me on 6-8819. Thank you for your attention to this matter.



91121720104

## 6.0 PROJECT SCHEDULE

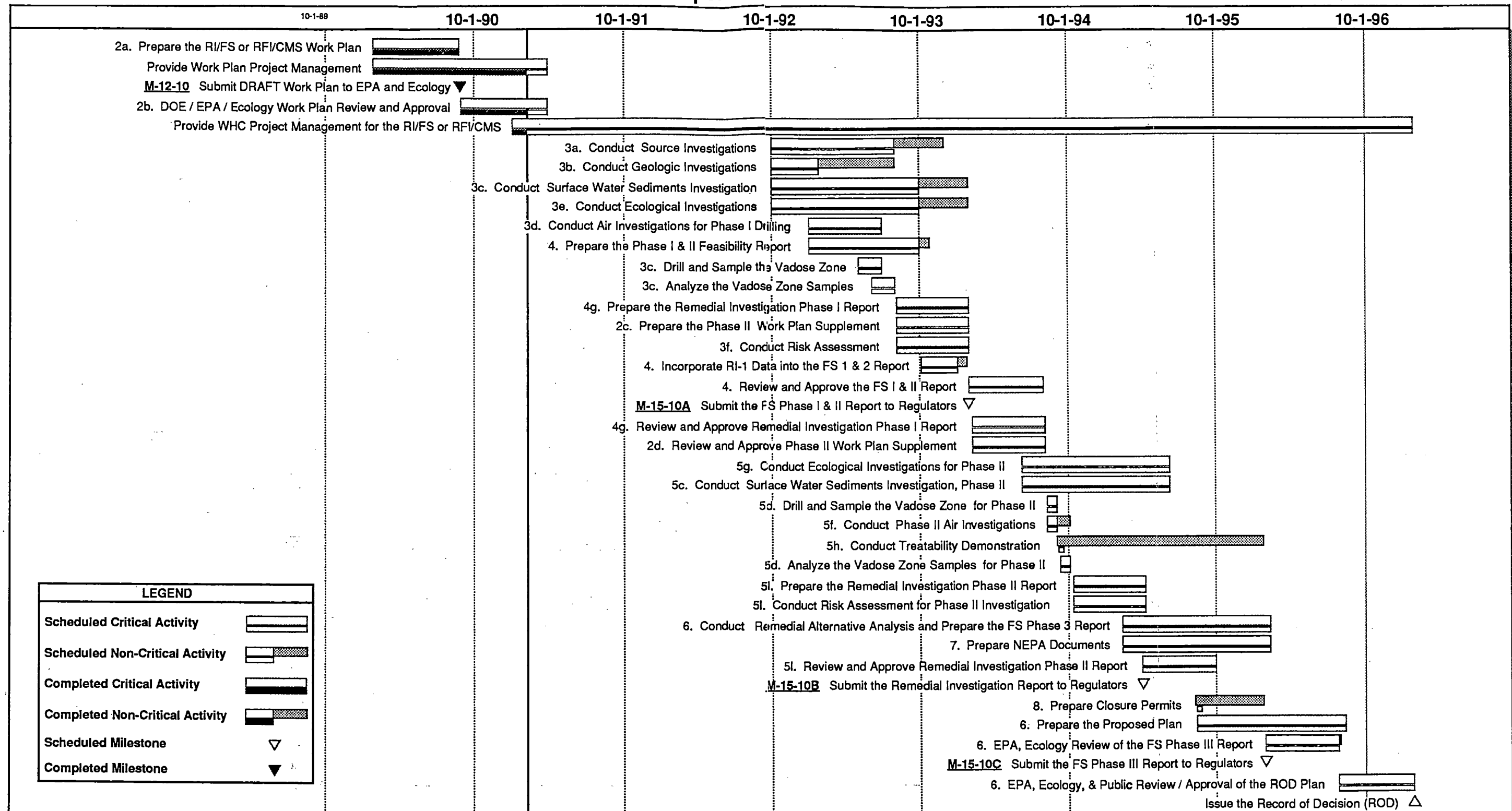
The schedule for the conduct of the 100-KR-1 operable unit RI/FS is presented in Figure 6-1 and a schedule integrated with the 100-KR-4 operable unit schedule is presented in Figure 6-2. Assumptions used to generate the schedules include the following:

- Funding for the 100-KR-1 and 100-KR-4 operable units is specified in the FY 1993 Environmental Restoration and Waste Management Five-Year Plan Activity Data sheets\* (Five-Year Plan) as estimated by the general cost model. If full five year funding is not available the schedule will be adjusted to reflect actual funding levels.
- Funding for the 100-KR-2 and 100-KR-3 operable units is not considered in this schedule.
- The 100-KR-1 and 100-KR-4 operable unit work plans will be approved by December 31, 1991.
- The NEPA documentation will be in place and approved by October 1, 1991, and will not impede the conduct of site characterization.
- Funding for the two operable units (100-KR-1 and 100-KR-4) is combined into a common pool and allocated to support the integrated schedule, without regard to the yearly operable unit funding breakdown presented in the Five-Year Plan.
- The schedule addresses only work activities detailed in the work plan. Provisions for imminent and substantial endangerment actions and expedited response actions are not included.
- Durations for characterization/treatability, corrective measures development, and corrective measures analysis are generic and not based on any specific knowledge of the operable units.
- The DOE, Ecology, and EPA concurrent review of primary documents will take 4 months. This includes 45 days for review, 45 days for comment incorporation and revision, and 30 days for acceptance and approval. No provision is included for delays to the schedule if dispute resolution is needed.
- Activity phases may be initiated upon submittal of the primary reports for review to the regulatory agencies.
- Source investigation tasks can be conducted before the approval of the work plans.

---

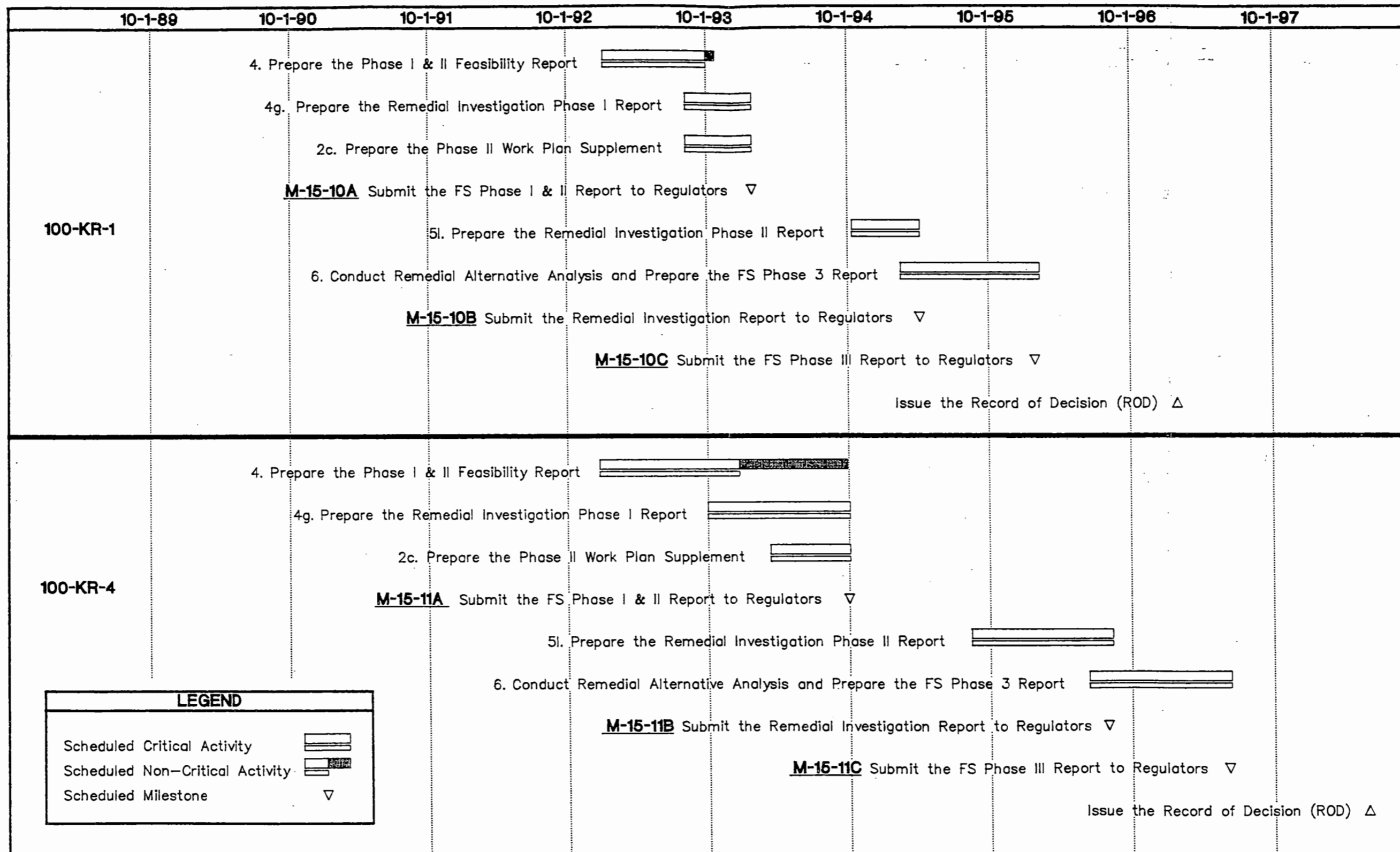
\*The FY 1993 Environmental Restoration and Waste Management Activity Data Sheets are available at the DOE-RL Public Reading Room in Richland, Washington.

### 100-KR-1 Source Operable Unit RI/FS Schedule



91121720106

100-KR-1 and 100-KR-4 Operable Unit RI/FS Integrated Schedule



91121720197

## 6.0 PROJECT SCHEDULE

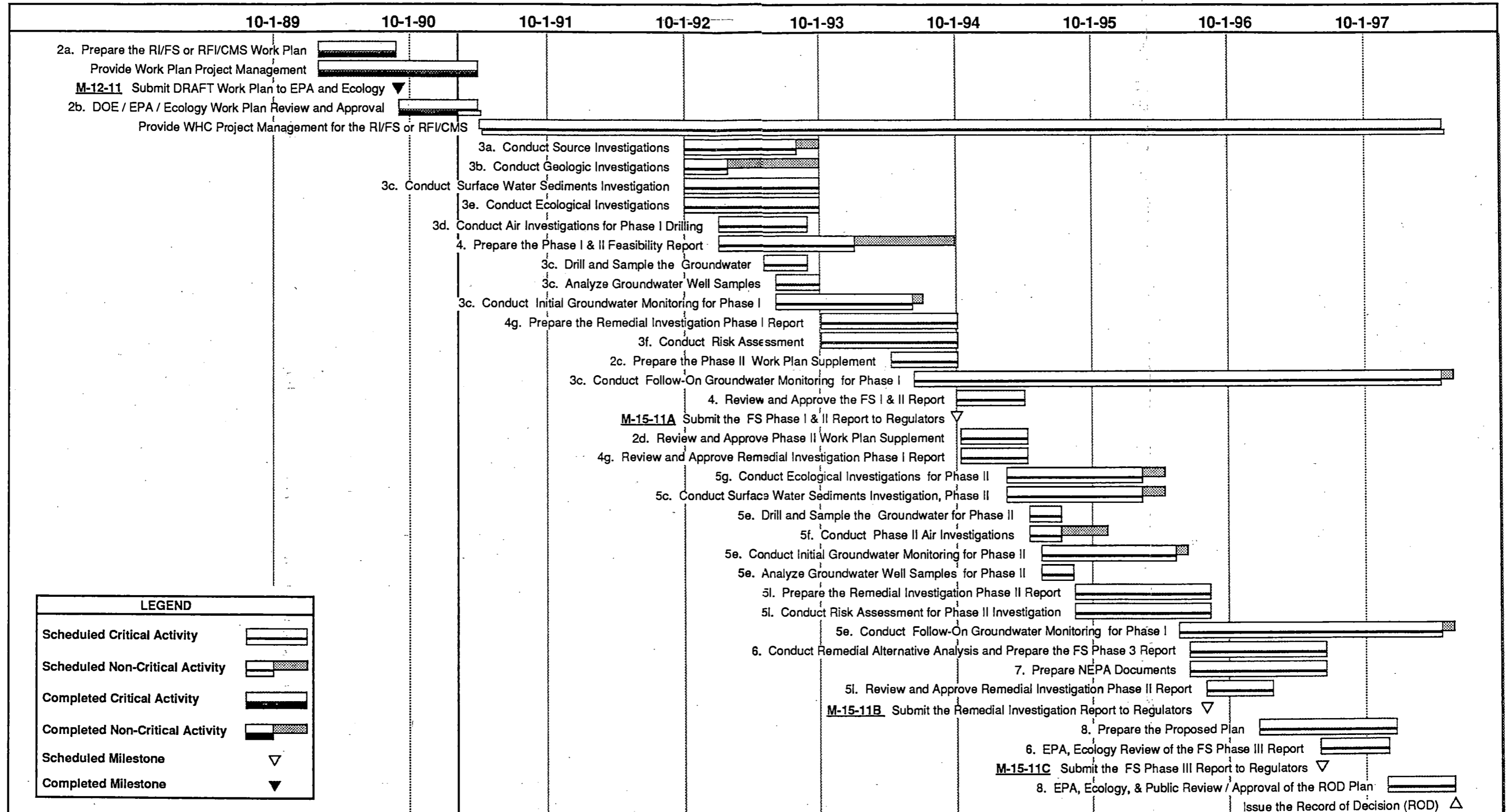
The schedule for the conduct of the 100-KR-4 operable unit RI/FS is presented in Figure 6-1 and a schedule integrated with the 100-KR-1 operable unit schedule is presented in Figure 6-2. Assumptions used to generate the schedules include the following:

- Funding for the 100-KR-1 and 100-KR-4 operable units is specified in the FY 1993 Environmental Restoration and Waste Management Five-Year Plan Activity Data sheets\* (Five-Year Plan) as estimated by the general cost model. If full five year funding is not available the schedule will be adjusted to reflect actual funding levels.
- Funding for the 100-KR-2 and 100-KR-3 operable units is not considered in this schedule.
- The 100-KR-1 and 100-KR-4 operable unit work plans will be approved by December 31, 1991.
- The NEPA documentation will be in place and approved by October 1, 1991, and will not impede the conduct of site characterization.
- Funding for the two operable units (100-KR-1 and 100-KR-4) is combined into a common pool and allocated to support the integrated schedule, without regard to the yearly operable unit funding breakdown presented in the Five-Year Plan.
- The schedule addresses only work activities detailed in the work plan. Provisions for imminent and substantial endangerment actions and expedited response actions are not included.
- Durations for characterization/treatability, corrective measures development, and corrective measures analysis are generic and not based on any specific knowledge of the operable units.
- The DOE, Ecology, and EPA concurrent review of primary documents will take 4 months. This includes 45 days for review, 45 days for comment incorporation and revision, and 30 days for acceptance and approval. No provision is included for delays to the schedule if dispute resolution is needed.
- Activity phases may be initiated upon submittal of the primary reports for review to the regulatory agencies.
- Source investigation tasks can be conducted before the approval of the work plans.

---

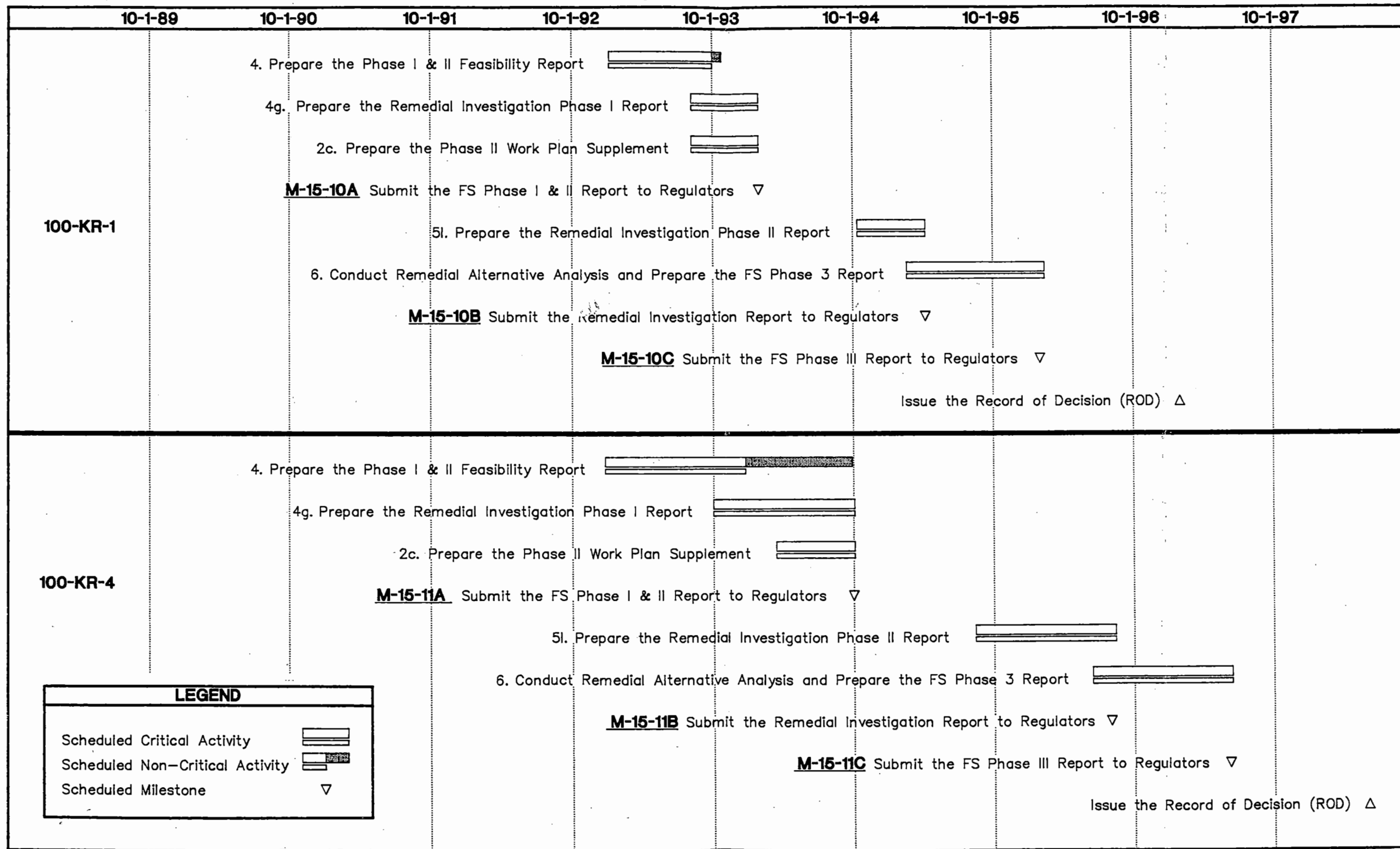
\*The FY 1993 Environmental Restoration and Waste Management Activity Data Sheets are available at the DOE-RL Public Reading Room in Richland, Washington.

100-KR-4 Source Operable Unit RI/FS Schedule



91121920199

100-KR-1 and 100-KR-4 Operable Unit RI/FS Integrated Schedule



91121920110