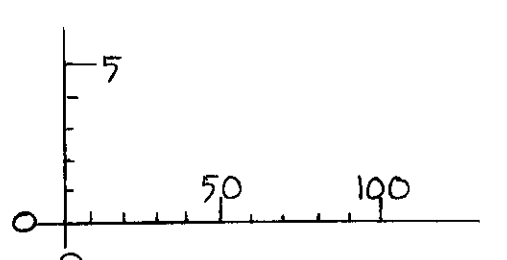
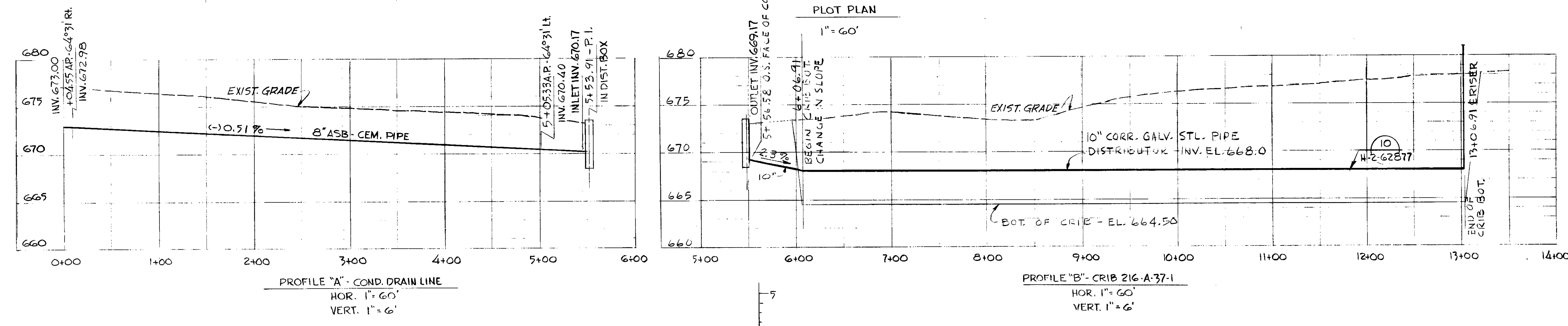


- GENERAL NOTES:
- CONDENSATE DRAIN FROM TIE-IN AT STUB PROVIDED IN EXISTING DISTRIBUTION BOX TO NEW DISTRIBUTION BOX TO BE ASBESTOS-CEMENT PIPE & FITTINGS PER ASTM C-428, CLASS 3300, ASSEMBLED WITH O-RINGS OF HEAT-RESISTANT (OIL-RESISTANT) SYNTHETIC RUBBER PER ASTM D-1869.
  - PIPE FOR DISTRIBUTOR PIPE, GAGE WELLS, & CONDENSATE DRAIN FROM NEW DISTRIBUTION BOX TO DISTRIBUTOR PIPE TO BE 16 GAGE CORRUGATED GALVANIZED STEEL PER FEDERAL SPEC. 00-C-806 AMEND. 1. HOLES IN DIST. PIPE TO BE DRILLED AS SHOWN. FITTINGS TO BE PREFABRICATED.
  - GRAVITY TEST ASBESTOS-CEMENT CONDENSATE DRAIN LINE AT 10' HEAD FOR 30 MIN. VISIBLE LEAKS TO BE REPAIRED AND LINE RE-TESTED.
  - FOR CRIB EXCAVATION, BACKFILL, & GRADING SEE SPEC. HW-7726.
  - INSTALLATION OF UNDERGROUND PIPING TO BE IN ACCORDANCE WITH HANFORD STD. SPEC. HWS-6138-S.
  - VENT FILTERS TO BE 10" DIAMETER X 6" MIN. LENGTH (NOMINAL) ABSOLUTE FILTER WITH 100 CFM RATED FLOW. FRAME TO BE CADMIUM PLATED STEEL. FILTER MEDIUM TO BE GLASS. SEPARATORS TO BE ALUMINUM, GLASS, OR WATERPROOF ASBESTOS. FILTER TO BE CAPABLE OF OPERATING IN ATMOSPHERE OF 200° F. & 100% RELATIVE HUMIDITY. FILTER TO BE SIMILAR TO FLANDERS FILTER CO. STOCK NO. 7061R-a OR CAMBRIDGE FILTER CORP. MODEL 10E-110-1.
  - CONCRETE TO BE 3000 PSI AT 28-DAY TEST.
  - FOR CONCRETE SPECS. SEE HANFORD STD. SPECS. HWS-4798-S & HWS-4799-S. CONCRETE FINISH FOR FORMED SURFACES, F-2, FOR UNFORMED SURFACES, U-2.
  - RECOAT ALL GALVANIZED SURFACES DESTROYED BY FABRICATION WITH GALVICON CORP. "GALVICON" OR APPROVED EQUAL. ALL OTHER EXPOSED STEEL TO RECEIVE ONE COAT RED LEAD PRIMER AND ONE COAT GRAY ALKYD ENAMEL.



FOR CURRENT STATUS OF CRIB SEE ARH-1562.

TRAC-1626 06/19/2017  
Approved for Public Release;  
Further Dissemination Unlimited

H-2-62876 3

ISOCHIM, INC.	
RICHLAND, WASHINGTON	
APPROVED FOR CONFORMANCE WITH DESIGN CRITERIA	
BY: <i>W.A. Brown</i>	DATE: 3-14-87
DWG. NO. H-2-62876	DATE: 3/14/87
APP'D. BY: <i>W.A. Brown</i>	DATE: 3/14/87

NO.	REV.	DATE	DESCRIPTION
3	2-78		ADDED REF & NOTE (2-8-8)
2	AS-76-2		CHECKED FOR AS-BUILT
1	68		INVT. OF CRIB WAS EL. 661.50
			INVT. OF DIST. PIPE WAS EL. 665.50
			DISTRIBUTOR PIPE WAS 8"

U. S. ATOMIC ENERGY COMMISSION	
RICHLAND OPERATION OFFICE	
SCALE: HOR. 1"=60', VERT. 1"=6'	DATE: 3/14/87
DRAWN BY: G. JOHNSON	CHECKED BY: <i>W.A. Brown</i>
RESPONSIBLE ENGR. G. JOHNSON	DATE: 3/14/87
APPROVED BY: <i>W.A. Brown</i>	DATE: 3/14/87
CLASSIFIED BY: <i>W.A. Brown</i>	DATE: 3/14/87
CLASSIFICATION: NONE	
PROJ. NO. IAP-610	PROJ. TITLE: REPL. FOR CRIB 216-A-30
S/DWG. NO. 216-A	INDEX NO. 0401
DWG. NO. H-2-62876	SHEET NO. 3