

Air Monitoring Plan for the Fast Flux Test Facility Complex Removal Action

Prepared for the U.S. Department of Energy
Assistant Secretary for Environmental Management



P.O. Box 550
Richland, Washington 99352

Air Monitoring Plan for the Fast Flux Test Facility Complex Removal Action

C. M. Ocampo
Central Plateau Cleanup Company LLC (CPCCo)

Date Published
January 2024

Prepared for the U.S. Department of Energy
Assistant Secretary for Environmental Management

 U.S. DEPARTMENT OF
ENERGY | Richland Operations
Office
P.O. Box 550
Richland, Washington 99352

APPROVED
By Sarah Harrison at 12:44 pm, Jan 17, 2024

Release Approval

Date

TRADEMARK DISCLAIMER

Reference herein to any specific commercial product, process, or service by tradename, trademark, manufacturer, or otherwise, does not necessarily constitute or imply its endorsement, recommendation, or favoring by the United States Government or any agency thereof or its contractors or subcontractors.

This report has been reproduced from the best available copy.

Printed in the United States of America

Signature Page

Title: *Air Monitoring Plan for the Fast Flux Test Facility Complex Removal Action*

Mark S. French
U.S. Department of Energy
Richland Operations Office

Signature

Date

This page intentionally left blank.

Contents

1 Introduction 1

2 Radiological Air Emissions 3

3 Criteria/Toxic Air Emissions 3

4 Radiological Airborne Source Information 4

5 Emission Controls 6

6 Monitoring 9

7 References 12

Figures

Figure 1. Location of the FFTF Complex Structures 1

Figure 2. FFTF-CB-EX Stack Ventilation System Schematic 7

Figure 3. Near-Facility Air Monitoring Locations for the FFTF Complex Structures 9

Tables

Table 1. Estimated FFTF-CB-EX Point Source Inventory 4

Table 2. Estimated Diffuse and Fugitive Area Source Inventories 4

Table 3. Total Effective Dose Equivalent to the Maximally Exposed Individual 6

This page intentionally left blank.

Terms

AOP	Air Operating Permit
APQ	annual possession quantity
CERCLA	<i>Comprehensive Environmental Response, Compensation, and Liability Act of 1980</i>
DHX	Dump Heat Exchanger
DOE	U.S. Department of Energy
EPA	U.S. Environmental Protection Agency
FFTF	Fast Flux Test Facility
FSF	Fuel Storage Facility
HEPA	high-efficiency particulate air (filter)
HTS	Heat Transport System
MEI	maximally exposed individual
NFM	near-facility monitoring
NESHAP	National Emission Standards for Hazardous Air Pollutants (40 CFR 61)
NTCRA	non-time-critical removal action
PTE	potential-to-emit
RCB	Reactor Containment Building
RSB	Reactor Service Building
S&M	surveillance and maintenance
TEDE	total effective dose equivalent
WDOH	Washington State Department of Health

This page intentionally left blank.

1 Introduction

2 This air monitoring plan supports DOE/RL-2023-16, *Removal Action Work Plan for the Fast Flux Test*
3 *Facility Complex*, for a non-time-critical removal action (NTCRA) at the Fast Flux Test Facility
4 (FFTF) Complex. DOE/RL-2023-16 is currently being developed in support of this air monitoring plan.
5 The structures addressed by this NTCRA are chemically and/or radiologically contaminated. The FFTF
6 Complex structures addressed in this NTCRA are as follows (Figure 1):

- 7 • 403 Fuel Storage Facility (FSF)
- 8 • 405 Reactor Containment Building (RCB)
- 9 • 408A Dump Heat Exchanger (DHX), East
- 10 • 408B Dump Heat Exchanger, South
- 11 • 408C Dump Heat Exchanger, West
- 12 • 491E Heat Transport System (HTS) Service Building, East
- 13 • 491S Heat Transport System Service Building, South
- 14 • 491W Heat Transport System Service Building, West
- 15 • 4717 Reactor Service Building (RSB).



16
17 **Figure 1. Location of the FFTF Complex Structures**

1 The selected NTCRA scope for the FFTF Complex structures includes the following activities:

- 2 • Continued surveillance and maintenance (S&M) of the FFTF Complex
- 3 • Hazard abatement of nine structures
- 4 • Disposal of wastes generated from the removal activities
- 5 • Clean up of miscellaneous debris
- 6 • Equipment decontamination
- 7 • Stabilization of the affected structures and immediately adjacent areas

8 Included in this NTCRA are characterization activities of remaining hazardous substances to facilitate
9 waste disposal, as well as to document post-removal conditions for future removal or remedial action.
10 For emissions calculations, activities addressed in this removal action are conservatively assumed to take
11 1 year to complete.

12 The implementation of the NTCRA requires that the FFTF Complex stacks be transitioned from
13 the Hanford Site Air Operating Permit (AOP) into the *Comprehensive Environmental Response,*
14 *Compensation, and Liability Act of 1980* (CERCLA) as part of DOE/RL-2023-16. The following
15 emission units are associated with the buildings/structures within the scope of this removal action:

- 16 • The FFTF-RE-SB Stack for 4717 RSB, Emission Unit 395
- 17 • The FFTF-HT-TR Stack for 491S HTS, Emission Unit 396
- 18 • The FFTF-CB-EX Stack for 405 RCB, Emission Unit 397

19 The stacks are covered within the radiological air emissions license number FF-01 (WDOH, 2017,
20 *Radioactive Air Emissions For The Department of Energy Richland Office Hanford Site License*) for
21 radiological air emissions associated with S&M activities. The change in the operational scope from
22 S&M to removal activities required a reevaluation of the potential-to-emit (PTE) to determine if the
23 existing control and monitoring technology would continue to meet the regulatory requirements of
24 WAC 246-247, “Radiation Protection—Air Emissions.”

25 In 2015, an agreement was made with the Washington State Department of Health (WDOH) to remove
26 Emission Units 395 and 396 from the AOP. Power to the fan motors for these two emission units has
27 been disconnected. However, these units remain in the permit until the deactivation and demolition
28 methods are defined and their needs are re-evaluated. Re-evaluation has not been performed to date.

29 This air monitoring plan updates the abatement and monitoring methods required to meet the substantive
30 requirements of the WAC 246-247 regulation for radioactive emissions; the WAC 173-400, “General
31 Regulations for Air Pollution Sources,” regulation for criteria emissions; and the WAC 173-460,
32 “Controls for New Sources of Toxic Air Pollutants,” regulation for toxic emissions. Collectively, these
33 regulations allow for CERCLA authority of the FFTF Complex through development of work documents
34 that provide compliance with the substantive provisions of the regulations during the NTCRA.
35 All substantive portions of each of these regulations will be identified in the following chapters, which
36 also provide for the abatement and monitoring methods associated with the hazard abatement of structures
37 that are included in the NTCRA.

2 Radiological Air Emissions

WAC 173-480, “Ambient Air Quality Standards and Emission Limits for Radionuclides,” sets state standards that are as stringent (or more so) as the federal standards under the *Clean Air Act Amendments of 1990* and subsequent amendments and under the federal implementing regulation, 40 CFR 61, “National Emission Standards for Hazardous Air Pollutants” (NESHAP), Subpart H, “National Emission Standards for Emissions of Radionuclides Other than Radon from Department of Energy Facilities.” U.S. Environmental Protection Agency (EPA) delegation of the 40 CFR 61 authority to the State of Washington includes all substantive emissions monitoring, abatement, and reporting aspects of the federal regulation. The state standards protect the public by conservatively establishing exposure standards applicable to a maximally exposed individual (MEI), be that individual real or hypothetical.

Therefore, the standards address any member of the public at the point of maximum annual air concentration in an unrestricted area where any member of the public may be. All combined radionuclide airborne emissions from the U.S. Department of Energy (DOE) Hanford Site “facility” are not to exceed amounts that would cause an exposure to any member of the public of greater than 10 mrem/yr effective dose equivalent, per the WAC 173-480-040, “Ambient Standard,” requirement. Adopting the specific substantive standards of WAC 173-480 and 40 CFR 61 (Subpart H), WAC 246-247 requires verification of compliance with the 10 mrem/yr standard and is applicable or relevant and appropriate to this NTCRA.

WAC 246-247-075, “Monitoring, Testing, and Quality Assurance,” addresses sources emitting fugitive or diffuse radioactive airborne emissions by requiring monitoring of such sources. Such monitoring requires physical measurement of the effluent or ambient air and quality assurance of environmental measures to assure precision, accuracy, and completeness. The substantive provisions of WAC 246-247 that require monitoring of radioactive airborne emissions are applicable or relevant and appropriate to this NTCRA.

The above state-implementing regulations further address control of radioactive airborne emissions where economically and technologically feasible (WAC 246-247-040 [3] and [4], “General Standards,” and associated definitions). To meet the substantive aspect of these requirements, best or reasonably achieved control technology will be applied by ensuring that demonstrated emission control technologies (those successfully operated in similar applications) will be used when economically and technologically feasible (i.e., based on cost/benefit). If it is determined that there are substantive aspects of the requirement for control of radioactive airborne emissions, then controls will be administered as appropriate.

3 Criteria/Toxic Air Emissions

Requirements are established under WAC 173-400 and WAC 173-460 for the regulation of emissions of criteria/toxic air pollutants, or “nonradioactive” air pollutants. The primary nonradioactive emissions resulting from hazard abatement of buildings/structures during this NTCRA will be fugitive particulate matter. In accordance with WAC 173-400-040, “General Standards for Maximum Emissions,” reasonable precautions must be taken to prevent the release of air contaminants associated with fugitive emissions resulting from materials handling, or other operations, and to prevent fugitive dust from becoming airborne from fugitive sources of emissions. The use of treatment technologies that would result in emissions of toxic air pollutants that would be subject to the substantive applicable requirements of WAC 173-460 are not anticipated to be a part of this NTCRA. Treatment of some waste encountered during this NTCRA may be required to meet acceptance criteria for the Environmental Restoration Disposal Facility (ERDF-00011, *Environmental Restoration Disposal Facility Waste Acceptance Criteria*) or the Integrated Disposal Facility (IDF-00002, *Waste Acceptance Criteria for the Integrated Disposal Facility*). In most cases, the type of treatment anticipated would consist of solidification/stabilization techniques such as macroencapsulation or grouting, which is analyzed in

1 the Environmental Restoration Disposal Facility waste acceptance criteria (ERDF-00011), and the
 2 Integrated Disposal Facility waste acceptance criteria (IDF-00002). Therefore, WAC 173-460-150,
 3 “Table of ASIL, SQER and de minimis emission values” requirements would not be considered an
 4 applicable or relevant and appropriate requirement as all criteria and toxic emissions will be below
 5 de minimis. This, in turn, fulfills the applicable requirement of WAC 173-460-070, “Ambient Impact
 6 Requirement,” and thus, WAC 173-460-060, “Control Technology Requirements.” If additional treatment
 7 is deemed necessary that would result in the emission of regulated air pollutants, the substantive
 8 requirements of WAC 173-400-113(2), “New Sources in Attainment or Unclassifiable Areas—Review
 9 for Compliance with Regulations,” and WAC 173-460-060 would be evaluated to determine applicability.

10 Emissions to the air will be minimized during implementation of this NTCRA through use of standard
 11 industry practices such as the application of fixatives. This technique is typically considered to be a
 12 reasonable precaution to control fugitive emissions as required by regulatory standards.

4 Radiological Airborne Source Information

14 There is a potential for particulate radionuclide airborne emissions resulting from the NTCRA activities.
 15 Radiological inventory values for the 405 RCB and 4717 RSB exhausting via the FFTF-CB-EX Stack are
 16 provided in Table 1.

Table 1. Estimated FFTF-CB-EX Point Source Inventory

Isotope	Structure Inventory* (Ci)		Total Inventory (Ci)
	405	4717	
Pu-239	---	2.33E-03	2.33E-03
Cs-137	2.70E+01	1.17E-01	2.71E+01
Ba-137m	2.55E+01	1.10E-01	2.57E+01

* Inventories calculated in Appendix A of ECF-HANFORD-23-0010, *Radiological and Toxic Air Emissions for the Fast Flux Test Facility Complex*.

17
 18 Radiological inventory values for the FFTF Complex structures that are diffuse and fugitive area sources
 19 are provided in Table 2.

Table 2. Estimated Diffuse and Fugitive Area Source Inventories

Structure No.	Radiological Inventory* (Ci)			
	Pu-239	Cs-137	Ba-137m	H-3
403	---	3.20E+00	3.03E+00	---
408A	1.17E-03	5.83E-02	5.51E-02	1.67E-02
408B	1.17E-03	5.83E-02	5.51E-02	1.67E-02
408C	1.17E-03	5.83E-02	5.51E-02	1.67E-02
491E	1.57E-03	7.85E-02	7.43E-02	---
491S	---	4.80E+01	4.54E+01	---

Table 2. Estimated Diffuse and Fugitive Area Source Inventories

Structure No.	Radiological Inventory* (Ci)			
	Pu-239	Cs-137	Ba-137m	H-3
491W	1.51E-03	7.57E-02	7.16E-02	---

* Inventories calculated in Appendix A of ECF-HANFORD-23-0010, *Radiological and Toxic Air Emissions for the Fast Flux Test Facility Complex*.

1
 2 An estimate of potential airborne emissions from the NTCRA work was conducted using the
 3 WAC 246-247-030(21)(a), “Definitions, Abbreviations, and Acronyms,” annual possession quantity
 4 (APQ) method.¹ The release fraction² for gases (1.0) and liquids or particulate solids (10^{-3}) was applied,
 5 as appropriate, to the APQ for the structures within the scope of the FFTF Complex removal action.
 6 The unabated total effective dose equivalent (TEDE) to the MEI³ was then calculated using CAP-88-PC⁴
 7 software (version 4.0) and documented in the calculation ECF-HANFORD-23-0010, *Radiological and*
 8 *Toxic Air Emissions for the Fast Flux Test Facility Complex*. For all cases, the offsite MEI is located to the
 9 southeast at the Hanford Site boundary, and the onsite MEI is located to the north-northeast at Energy
 10 Northwest. TEDE to the onsite MEI is provided in accordance with the agreement reached between DOE,
 11 Richland Operations Office; EPA; and WDOH (AIR 00-1012, “New Maximally Exposed Individual
 12 Definition”). The distance to the onsite and offsite MEIs are provided in Table 3.

13 The representative radionuclides used for the calculation were plutonium-239 for alpha and cesium-137
 14 and barium-137m for beta/gamma, with these radionuclides contributing greater than 10% of the TEDE to
 15 the MEI for both point source and diffuse and fugitive emissions (note: plutonium-239 contributes less
 16 than 10% for the FFTF-CB-EX Stack and is not present in the 403 FSF and 491S HTS cases).
 17 These isotopes were chosen to conservatively estimate the TEDE based upon their presence in the source
 18 material and their potential dose consequence compared to the rest of radioisotopes in the source material.
 19 It is also conservatively assumed that all the APQ for the areas within the scope of the removal action
 20 would be released within 1 year.

21 The unabated TEDE to the offsite MEI for the point source from the 405 RCB and 4717 RSB structures
 22 which utilize the FFTF-CB-EX Stack is less than 0.1 mrem/yr. In lieu of monitoring, emissions estimated
 23 by calculation are currently performed as discussed in Chapter 6. For the diffuse and fugitive sources
 24 from 403, 408A, 408B, 408C, 491E, 491S and 491W, the total PTE is also less than 0.1 mrem/yr TEDE

¹ The APQ method looks at a given isotopic source term, multiplied by the associated release fraction provided in WAC 246-247-030(21)(a), in order to determine a dose to a hypothetical MEI.

² When calculating PTE, a WAC 246-247-030(21)(a) release fraction is assigned to some or all the source term based on the physical state of the media. In most cases, a 10^{-3} release fraction is assigned to the source term, assuming it all to be liquids or particulate solids. For the 408A, 408B, and 408C DHX buildings, a gaseous release fraction of 1.0 is assigned to the hydrogen-3 source term.

³ The WAC 246-247-030(15) definition for MEI is: “any member of the public (real or hypothetical) who abides or resides in an unrestricted area, and may receive the highest TEDE from the emission unit(s) under consideration, taking into account all exposure pathways affected by the radioactive air emissions.” For the purposes of radiological source term, the offsite MEI is to the southeast at the Hanford Site boundary line. This excludes the land transferred to the Tri-Cities Washington Economic Development Council.

⁴ A regulatory compliance tool under NESHAP (40 CFR 61), the Clean Air Act Assessment Package-1988 (CAP-88) model is a set of computer programs, databases, and associated utility programs for estimating dose and risk from radionuclide emissions to the air. CAP88-PC version 4.0 allows modeling on a personal computer and is a recent version of the code.

1 to the MEI. Table 3 provides the unabated TEDE to the onsite and offsite MEIs for each structure within
 2 the scope of this removal action.

Table 3. Total Effective Dose Equivalent to the Maximally Exposed Individual

Emission Type	Structure No.	Offsite MEI		Onsite MEI ^a	
		Unabated TEDE (mrem/yr)	MEI Location ^b (m SE)	Unabated TEDE (mrem/yr)	MEI Location ^b (m NNE)
Point source	FFTF-CB-EX Stack (405 & 4717)	1.43E-02	6,072	3.27E-02	3,028
Diffuse and fugitive	403	1.81E-03	6,058	4.91E-03	2,964
	408A	4.17E-05	5,999	1.07E-04	3,057
	408B	4.04E-05	6,132	1.04E-04	3,123
	408C	3.98E-05	6,193	1.05E-04	3,088
	491E	5.50E-05	6,034	1.43E-04	3,051
	491S	2.70E-02	6,071	6.93E-02	3,087
	491W	5.21E-05	6,105	1.35E-04	3,080
	Subtotal	2.90E-02		7.48E-02	
Total	4.33E-02		1.08E-01		

Source: ECF-HANFORD-23-0010, *Radiological and Toxic Air Emissions for the Fast Flux Test Facility Complex*, Table 7.

Note: CAP88-PC, version 4.0, allows modeling on a personal computer and is a recent version of CAP-88, a regulatory compliance tool under 40 CFR 61, “National Emission Standards for Hazardous Air Pollutants.”

a. TEDE to the onsite MEI is provided in accordance with the agreement reached between the U.S. Department of Energy, Richland Operations Office; the U.S. Environmental Protection Agency, and the Washington State Department of Health (AIR 00-1012, “New Maximally Exposed Individual Definition”).

b. The offsite MEI is located to the southeast at the Hanford Site boundary and the onsite MEI is located to the north-northeast at Energy Northwest for all cases.

MEI = maximally exposed individual

NNE = north northeast

SE = southeast

TEDE = total effective dose equivalent

3

4

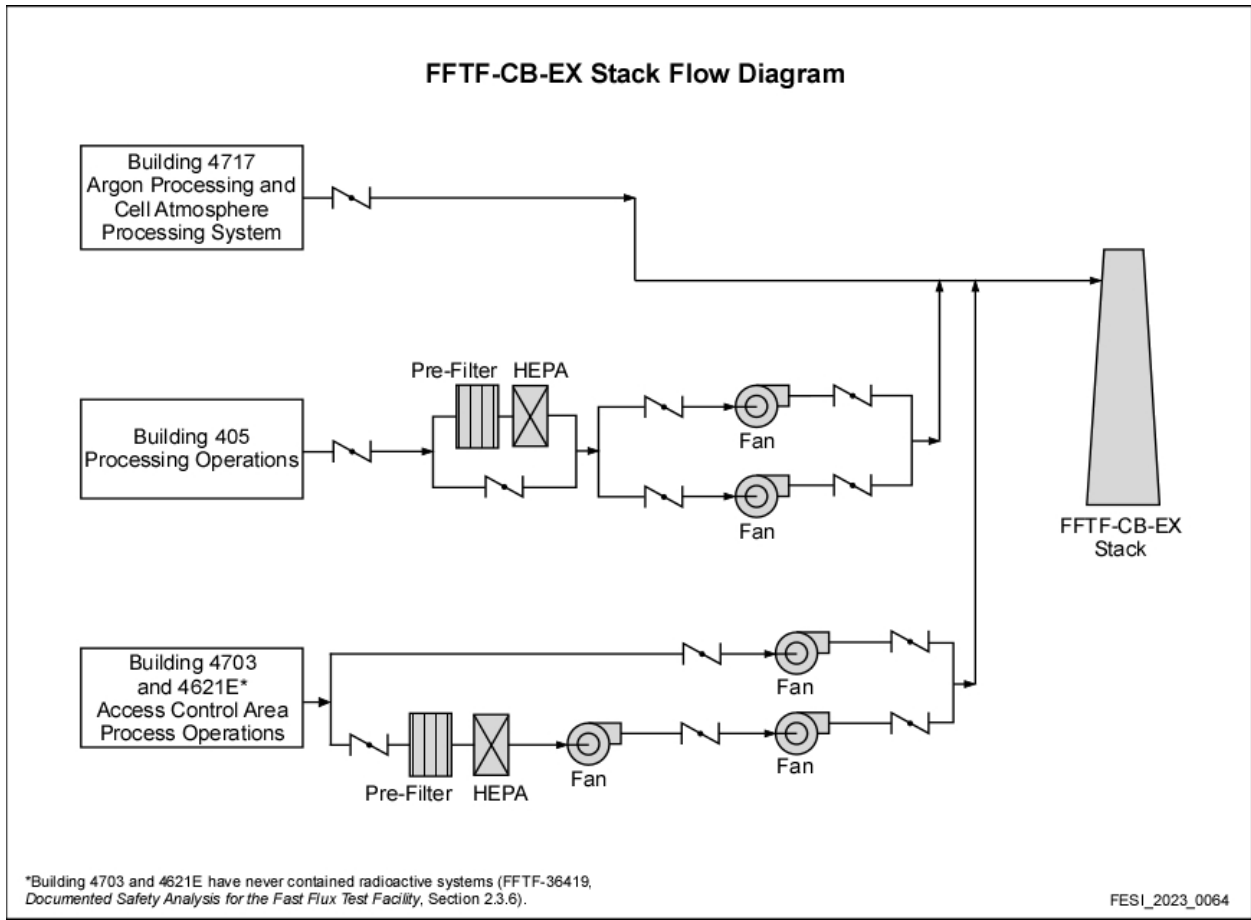
5 Emission Controls

5 As a significant activity regarding potential for airborne radionuclide emissions, this NTCRA will be
 6 subject to the substantive provisions of WAC 246-247-040, “General Standards.” The 40 CFR 61.93,
 7 “Emission Monitoring and Test Procedures” requirements, adopted through WAC 246-247-035(1)(a)(i),
 8 “National Standards Adopted by Reference for Sources of Radionuclide Emissions,” are also a
 9 substantive requirement within this work scope.

1 The activities performed in the 405 and 4717 Buildings as part of the NTCRA include hazard abatement
2 and ongoing S&M. The FFTF-CB-EX ventilation system consists of the ducts, two sets of prefilters and
3 high-efficiency particulate air (HEPA) filters, parallel exhaust fans, the exhaust stack, and control
4 equipment. The FFTF-CB-EX ventilation system pulls exhaust air from the following systems and
5 airspaces (Figure 2):

- 6 • Argon Processing and Cell Atmosphere Processing System – Building 4717
- 7 • Building 405 Process Operations – Building 405
- 8 • Access Control Area and Process Operations – Buildings 4703 and 4621E

9 Exhaust fans R-3 (primary) and R-4 (backup), located in the 4621E Auxiliary Equipment Building, are
10 being used to support the FFTF-CB-EX emission unit. Only one of the two fans is operated during the
11 period of personnel entry into the respective buildings. During the deactivation period, the original
12 sources of power to these fans were replaced with a new power supply and the compressed air systems
13 used to operate dampers were deactivated.



14

15

Figure 2. FFTF-CB-EX Stack Ventilation System Schematic

1 HEPA filters will have a manufacturer rated removal efficiency of at or above 99.97%. The filters are
2 in-place leak tested annually to the standard of at or above 99.95%, meeting the intent of
3 ASME N511-2017, *In-Service Testing of Nuclear Air-Treatment, Heating, Venting, and Air-Conditioning*
4 *Systems*. The filters are not used if aerosol testing performance criteria are not met.
5 The following measures were selected to provide added worker protection controls:

- 6 • Planning for the special handling of stabilized items while minimizing risk of damage
7 during handling.
- 8 • Vacuum cleaners and/or portable exhausters used for removal activities equipped with HEPA-type
9 filters to provide point source or downdraft contamination control.
- 10 • Future temporary exhausters with HEPA filters will be provided as an alternate air mover as
11 practicable.

12 Hazard abatement and ongoing S&M activities in the 403, 408A, 408B, 408C, 491E, 491S, and
13 491W Buildings are the contributors to the diffuse and fugitive emissions. It has been demonstrated
14 through Hanford Site experience and ongoing operations that the listed available methods, systems, and
15 techniques for the control of radionuclide particulate emissions in the bulleted list below represent
16 the most effective control technology from among all known feasible alternatives and the required level
17 of best available radionuclide control technology for the subject NTCRA.

18 Based on analysis of the potential emissions and evaluation of available control technologies,
19 the following active controls of diffuse and fugitive emissions have been selected for use when
20 practicable during this removal action. The radiological control and environmental organizations are
21 responsible for selecting and ensuring that appropriate controls are implemented to maintain both worker
22 exposure and environmental releases as low as reasonably achievable. These include, but are not limited
23 to, the following:

- 24 • Items inside of the ventilated space may be internally and externally stabilized and handled to
25 minimize any potential release prior to being removed from ventilated space or securing ventilation.
- 26 • Radiological surveys (e.g., swipes/smears) will be taken from equipment leaving areas where there is
27 the potential for removable contamination above 2,000 dpm/100 cm² alpha or 100,000 dpm/100 cm²
28 beta/gamma following any removal activities.
- 29 • Operational limits for removable or transferable radioactive contamination levels will be established
30 in work packages and associated radiation work procedures. Fixatives or other physical controls will
31 be employed if removable or transferable contamination levels above 100,000 dpm/100 cm²
32 beta/gamma or exceeding 2,000 dpm/100 cm² alpha are measured or expected.
- 33 • Fixatives will be applied to contaminated equipment per manufacturer instructions as needed
34 to minimize airborne contamination during the NTCRA activities. Fixative application
35 techniques may include spraying, brushing, pouring, or another method, as necessary.
- 36 • Measures such as decontamination solutions, expandable foam, or encasement in grout, fixatives, or
37 glovebags will also be used in a graded approach to help minimize the spread of contamination.
- 38 • Waste containers will remain closed, except during packaging and waste inspection activities.
- 39 • Any vacuum cleaners and portable exhausters used for removal activities will be equipped with
40 appropriately tested HEPA filters. Filters will be aerosol tested annually. Units will undergo

1 additional aerosol testing in the event that the units are thought to have been compromised
2 (e.g., dropped or roughly handled).

- 3 • Portable exhausters or wet methods will be utilized to control emissions from stripping operations,
4 which tend to generate respirable particulate matter (e.g., grinding, cutting, or welding) whenever it is
5 reasonably possible to do so.

6 If unanticipated new sources of airborne pollutants are encountered, the potential for emissions will be
7 reviewed and appropriate controls implemented, as required.

8 Best available radionuclide control technology and as low as reasonably achievable control technology
9 controls will be applied based on the PTE using a graded approach.

10 6 Monitoring

11 There are two components associated with airborne emissions monitoring at the FFTF Complex as part of
12 the NTCRA: point source monitoring (e.g., sampling of HEPA-filtered vacuums, portable HEPA-filtered
13 exhausters, or temporary exhausters) and diffuse and fugitive monitoring (e.g., temporary ambient
14 air monitors used by the radiological control program, radiological surveys), coupled with monitoring
15 effectiveness validation using the near-facility monitoring (NFM) (air monitoring stations N589, N911,
16 N912, and N939). Figure 3 provides the air monitoring station locations.

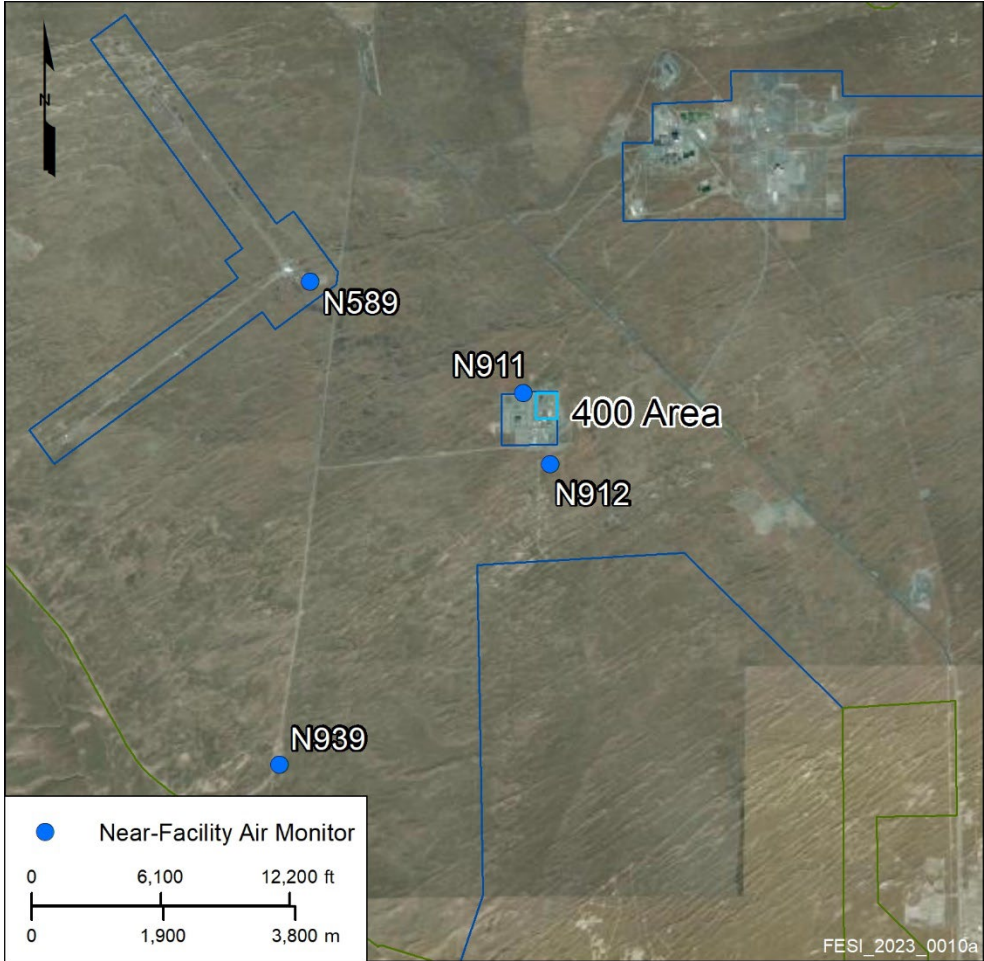


Figure 3. Near-Facility Air Monitoring Locations for the FFTF Complex Structures

1 The calculated unabated annual dose combined for all in-scope related point source (1.43E-02 mrem/yr)
2 and diffuse and fugitive source (2.90E-02 mrem/yr) activities during the NTCRA is 4.33E-02 mrem/yr
3 TEDE to the offsite MEI (Table 3). This emission is estimated, in lieu of monitoring, in accordance with
4 40 CFR 61, Appendix D, “Methods for Estimating Radionuclide Emissions,” and the substantive
5 requirements of WAC 246-247-075(3). Fugitive and diffuse emissions monitoring with applicable quality
6 assurance will be provided, reflecting the substantive requirements of WAC 246-247-075(8).

7 The activities performed in the FFTF Complex structures as part of the NTCRA include hazard abatement
8 and equipment decontamination, in addition to ongoing S&M. All activities are performed within the
9 confinement boundary of the buildings/structures. For the 405 and 4717 structures, resultant emissions
10 will exhaust through the FFTF-CB-EX Stack and are controlled and monitored as point source emissions.
11 FFTF-CB-EX emissions are currently estimated using WAC 246-247-030(21)(a) and reported in the
12 annual Hanford Site radioactive air emissions report (e.g., DOE/RL-2023-07, *Radionuclide Air Emissions
13 Report for the Hanford Site, Calendar Year 2022*). This method of estimating emissions will continue to
14 be utilized during the removal action. For the 403, 408A, 408B, 408C, 491E, 491S, and 491W Buildings,
15 the resultant emissions are controlled and monitored as diffusion and fugitive sources.

16 As the point source TEDE to both the onsite and offsite MEIs are below the 0.1 mrem/yr threshold for the
17 NTCRA, the FFTF-CB-EX Stack would remain:

- 18 • A “minor” point source of emissions meeting the substantive requirements of 40 CFR 61.93(b)(4).
19 All radionuclides that could cause an effective dose equivalent greater than 1% of the standard or
20 contribute greater than 10% of the potential effective dose equivalent may be determined through
21 alternative procedures under 40 CFR 61.93(b)(4)(i).
- 22 • A potential impact category 3 point source according to Table 2 of ANSI/HPS N13.1-1999, *Sampling
23 and Monitoring Releases of Airborne Radioactive Substances from the Stacks and Ducts of Nuclear
24 Facilities*.

25 The removal action scope is similar to the scope of activities identified and conducted under the current
26 AOP for the FFTF-CB-EX emission unit. FFTF-CB-EX emissions will continue to be estimated using
27 WAC 246-247-030(21)(a) during the NTCRA as a compliant replacement for monitoring. Concurrence
28 for estimating the FFTF-CB-EX point source emissions will be obtained from Washington State
29 Department of Ecology, in consultation with WDOH, prior to implementation.

30 Where the FFTF-CB-EX Stack ventilation is not sufficient to provide for worker safety, various types of
31 engineering controls and containments will be used for exhausting through portable HEPA-filtered
32 exhausters, with portable HEPA-filtered vacuums used as needed. The portable exhausters are small
33 emission units that are easily set up for use and readily portable, being either hand-carried or
34 wheel mounted.

35 HEPA-filtered vacuums intended for use will vary in size with both large and small, portable units of
36 the type similar to those in use on the Hanford Site (e.g., portable temporary radioactive air emissions
37 units). To verify low emissions periodically, a contamination survey of the outlet of the vacuum will be
38 performed at the completion of use. Vacuuming using one of these devices has no specific contamination
39 limit but will be controlled based on the specifics of the situation. If contamination levels over
40 2,000 dpm/100 cm² alpha or 100,000 dpm/100 cm² beta/gamma (i.e., high surface contamination area) are
41 inadvertently exceeded, a separate evaluation regarding emissions measurement will be conducted.

1 During the removal activities at the FFTF Complex, worker protection (worksite) monitoring activities
2 will be considered and may include the following:

- 3 • Real-time and periodic radiological monitoring using temporary ambient air monitors as prescribed
4 by the Radiological Control organization and reviewed by the Environmental organization
5 (primary method for evaluating compliance with the action levels and void limits)
- 6 • Radiological smear surveys (indicator – effluent air emission estimated rates are based on gross
7 residual contamination levels)

8 These worksite monitoring activities verify the effectiveness of abatement and as low as
9 reasonably achievable control methods during removal activities. Worksite monitoring includes using
10 temporary ambient air monitors (real-time continuous air monitors with alarms, personnel samplers, and
11 ambient air samplers) and surveys. The worksite monitoring network will be established as directed by
12 the contractor Radiological Control organization, with review by the Environmental organization, and
13 will be focused around and in the established radioactive control zones. This monitoring network provides
14 the primary emissions data used to ensure the limits set in the Radiological Work Permit are not
15 exceeded.

16 Using a graded approach, additional monitoring for diffuse and fugitive emissions may be conducted in
17 place of using handheld instruments during removal activities at radiologically contaminated sites.
18 The additional monitoring may be a combination of radiological contamination surveys for removable
19 alpha and beta-gamma activity and workplace air monitoring. Work progress contamination surveys may
20 be performed adjacent to contamination area boundaries during active remediation to monitor for
21 contamination spread, as needed. Periodic contamination surveys may be performed when needed while
22 working within the posted contamination areas to ensure that removable contamination levels are below
23 the limiting conditions of the applicable Radiological Work Permit. Lapel air samplers may be worn by
24 personnel entering areas that are monitored for occupational exposure to airborne radioactivity when
25 workplace air samplers are determined to be nonrepresentative of active work areas (i.e., not close enough
26 to the workers or in the wrong position to be representative of the breathing zone air activity).

27 In addition to worksite monitoring, the 400 Area Near Facility Ambient Air Program stations nearest
28 the FFTF Complex provide validation of the effectiveness of the contamination control measures utilizing
29 the near-field monitoring network. The four air monitoring stations (N589, N911, N912, and N939) do
30 not provide real-time data, so their biweekly data will be used as indicators along with the worksite
31 monitoring data for overall trending of the effectiveness of the contamination control measures. As part of
32 the sitewide evaluation of NFM data, the sample management and analytical results tracking database
33 compares NFM 6-month composite air sample results to 10% of the 40 CFR 61, Appendix E,
34 “Compliance Procedures Methods for Determining Compliance With Subpart I,” Table 2 values.
35 The NFM database identifies results that exceed these values. Results from the air monitoring stations
36 identified in this document that are above these values will be reviewed, the adequacy of the controls
37 evaluated as appropriate, and DOE, Richland Operations Office, and EPA will be notified.

38 The well-established Hanford Site protocol for emission monitoring will be followed, including
39 Hanford Site perimeter ambient air data collection, sampling frequencies, sample analysis, and data
40 reporting (DOE/RL-91-50, *Hanford Site Environmental Monitoring Plan*). This method will address
41 the substantive requirements of WAC 246-247-075. Perimeter monitoring is used to measure the diffuse
42 and fugitive emissions from the Hanford Site. Demonstration of compliance with the 40 CFR 61.92,
43 “Standard,” effective dose equivalent of 10 mrem/yr limit is provided by the radioactive air emissions
44 report for the Hanford Site (e.g., DOE/RL-2023-07).

7 References

- 1
2 40 CFR 61, “National Emission Standards for Hazardous Air Pollutants,” *Code of Federal Regulations*.
3 Available at: <https://www.ecfr.gov/current/title-40/chapter-I/subchapter-C/part-61?toc=1>.
4 61.92, “Standard.”
5 61.93, “Emission Monitoring and Test Procedures.”
6 Appendix D, “Methods for Estimating Radionuclide Emissions.”
7 Appendix E, “Compliance Procedures Methods for Determining Compliance With Subpart I.”
8 Subpart H, “National Emission Standards for Emissions of Radionuclides Other Than Radon
9 from Department of Energy Facilities.”
- 10 AIR 00-1012, 2000, “New Maximally Exposed Individual Definition” (letter to S.H. Wisness,
11 U.S. Department of Energy, Richland Operations Office, from A.W. Conklin),
12 Washington State Department of Health, Olympia, Washington, October 18. Available at:
13 <https://pdw.hanford.gov/document/AR-03321>.
- 14 ANSI/HPS N13.1-1999, *Sampling and Monitoring Releases of Airborne Radioactive Substances from*
15 *the Stacks and Ducts of Nuclear Facilities*, American National Standards Institute/Health
16 Physics Society, New York, New York.
- 17 ASME N511-2017, 2017, *In-Service Testing of Nuclear Air Treatment, Heating, Ventilating, and*
18 *Air-Conditioning Systems*, American Society of Mechanical Engineers, New York, New York.
- 19 *Clean Air Act Amendments of 1990*, Pub. L. 101-549 as amended, 42 USC 7407 et seq., November 15.
20 Available at:
21 <https://www.govinfo.gov/content/pkg/STATUTE-104/pdf/STATUTE-104-Pg2399.pdf>.
- 22 *Comprehensive Environmental Response, Compensation, and Liability Act of 1980*, 42 USC 9601, et seq.,
23 Pub. L. 107-377, December 31, 2002. Available at:
24 <https://www.csu.edu/cerc/researchreports/documents/CERCLASummary1980.pdf>.
- 25 DOE/RL-91-50, 2018, *Hanford Site Environmental Monitoring Plan*, Rev. 8, U.S. Department of Energy,
26 Richland Operations Office, Richland, Washington. Available at:
27 https://www.hanford.gov/files.cfm/2018_EMP_estars.pdf.
- 28 DOE/RL-2023-07, 2023, *Radionuclide Air Emissions Report for the Hanford Site, Calendar Year 2022*,
29 Rev. 0, U.S. Department of Energy, Richland Operations Office, Richland, Washington.
30 Available at: <https://pdw.hanford.gov/document/AR-24941>.
- 31 ECF-HANFORD-23-0010, 2023, *Radiological and Toxic Air Emissions for the Fast Flux Test Facility*
32 *Complex*, Rev. 0, Central Plateau Cleanup Company, Richland, Washington. Available at:
33 <https://pdw.hanford.gov/document/AR-24960>.
- 34 ERDF-00011, 2018, *Environmental Restoration Disposal Facility Waste Acceptance Criteria*, Rev. 1,
35 CH2M HILL Plateau Remediation Company, Richland, Washington. Available at:
36 <https://pdw.hanford.gov/document/AR-01205>.
- 37 IDF-00002, 2019, *Waste Acceptance Criteria for the Integrated Disposal Facility*, Rev. 0, CH2M HILL
38 Plateau Remediation Company, Richland, Washington. Available at:
39 <https://pdw.hanford.gov/document/AR-19743>.

- 1 WAC 173-400, “General Regulations for Air Pollution Sources,” *Washington Administrative Code*,
2 Olympia, Washington. Available at: <https://apps.leg.wa.gov/WAC/default.aspx?cite=173-400>.
3 173-400-040, “General Standards for Maximum Emissions.”
4 173-400-113, “New Sources in Attainment or Unclassifiable Areas—Review for Compliance
5 with Regulation.”
- 6 WAC 173-460, “Controls for New Sources of Toxic Air Pollutants,” *Washington Administrative Code*,
7 Olympia, Washington. Available at: <https://apps.leg.wa.gov/WAC/default.aspx?cite=173-460>.
8 173-460-060, “Control Technology Requirements.”
9 173-460-070, “Ambient Impact Requirement.”
10 173-460-150, “Table of ASIL, SQER and de minimis emission values.”
- 11 WAC 173-480, “Ambient Air Quality Standards and Emission Limits for Radionuclides,” *Washington
12 Administrative Code*, Olympia, Washington. Available at:
13 <https://apps.leg.wa.gov/WAC/default.aspx?cite=173-480>.
14 173-480-040, “Ambient Standard.”
- 15 WAC 246-247, “Radiation Protection—Air Emissions,” *Washington Administrative Code*, Olympia,
16 Washington. Available at: <https://apps.leg.wa.gov/WAC/default.aspx?cite=246-247>.
17 246-247-030, “Definitions, Abbreviations, and Acronyms.”
18 246-247-035, “National Standards Adopted by Reference for Sources of Radionuclide
19 Emissions.”
20 246-247-040, “General Standards.”
21 246-247-075, “Monitoring, Testing, and Quality Assurance.”
- 22 WDOH, 2017, *Radioactive Air Emissions License For The Department of Energy Richland Office
23 Hanford Site*, License Number RAEL-FF-01, Office of Radiation Protection, Radioactive Air
24 Emissions, The State of Washington Department of Health, Olympia, Washington.
25 Available at: [https://fortress.wa.gov/ecy/nwp/permitting/AIR/DoH_License_Files/EU
26 254/NOC_1063_R/Lic_File.pdf](https://fortress.wa.gov/ecy/nwp/permitting/AIR/DoH_License_Files/EU_254/NOC_1063_R/Lic_File.pdf).
27

1

2

This page intentionally left blank.